



# NWU TYPE II/III CHAPLAIN CORPS STAFF CORPS DEVICE

Buddhist

Christian

Jewish

Muslim

NWU  
TYPE II



NWU  
TYPE III



Description: 1 ½ inch by 1 ½ inch patch perimeter with embroidered Chaplain Corps insignia, made of matching NWU Type II or III fabric, with Chaplain Corps insignia embroidered with black thread and positioned perpendicular on the material.



# ***NAVY EXPEDITIONARY SUPPLY CORPS OFFICER (NESCO) WARFARE INSIGNIA***

---



- **A 2 3/4" x 7/8" gold metal pin showing a Supply Corps oak leaf centered, superimposed on a crossed sword and M16A1 rifle, on a background of ocean swells.**
- **There are two sizes of the metal pin-on Qualified Navy Expeditionary Supply Corps Officer breast insignia, the miniature size (1 1/2" x 1/2") insignia is normally worn on uniforms requiring miniature medals.**
- **The insignia is authorized for wear on the Naval Officer uniforms as prescribed in the U.S. Navy Uniform Regulations.**



# ***Commands Authorized Daily, Deployment and Pre-deployment Training Wear of the NWU Type II/III (Endorsed by the Navy Uniform Board)***

---

## **NWU TYPE II**

**Per NAVADMIN 259/11 paragraph 8A, NWU Type II is authorized for personnel requiring a Desert Tactical Uniform in the theater of operations. Those commands authorized to wear the NWU Type II include:**

- NSW Personnel;
- Sailors (INCL USCG) assigned to NSW units;
- Sailors (INCL USCG) assigned to units directly supporting NSW missions.

## **NWU TYPE III**

**1. Per NAVADMINs 259/11 (para 8B) and 164/12 (para 4), “daily wear” of the NWU Type III is authorized for the following organizations:**

### **NAVADMIN 259/11**

- NSW personnel and Sailors assigned to NSW units;
- Naval Expeditionary Combat Command (NECC) Forces;
- Naval Facilities Engineering Commands (NAVFAC);



# ***Commands Authorized Daily, Deployment and Pre-deployment Training Wear of the NWU Type II/III (Endorsed by the Navy Uniform Board)***

---

## NAVADMIN 259/11 (con't)

- Naval Beach Group (NBG) commands;
- Naval Education Training Centers responsible for training NECC/NBG/NSW core rates (Specifically: Center for EOD and SEAL/Special Warfare Combat-Craft Crewman, and Expeditionary Warfare Training Groups);
- Navy Expeditionary Medical Support Command;
- Occupational Support Health Units;
- Strategic Command Wing ONE/Task Force 124;
- Fleet Readiness Center West;
- Commander Patrol and Reconnaissance Wing (CTF-57);
- Expeditionary Naval Aviation Units directly ISO USMC and NSW Operations;
- Navy Experimental Diving unit;
- Commander Submarine Development Squadron 5 (Saturation Projects);
- Naval Research Laboratory Site Detachment Sea Component;
- Naval Support Activity Thurmont;
- Seabee/CEC assigned to USMC activities to include MCB Kaneohe, Camp Butler Okinawa, MCAS Iwakuni, and MCB Quantico;
- USCG personnel are authorized to wear NWU Type III in compliance with this NAVADMIN and Navy Uniform Regulations.



# ***Commands Authorized Daily, Deployment and Pre-deployment Training Wear of the NWU Type II/III (Endorsed by the Navy Uniform Board)***

---

## **NAVADMIN 164/12**

- Commander Patrol and Reconnaissance Wing (CTF-68), NAVSPEC Task Force Europe;
- Commander Patrol and Reconnaissance Wing (CTF-67);
- Defense Threat Reduction Agency (DTRA) Contingency Operations Division (OP-ONC).

**2. Per NAVADMINs 164/12 (para 5) and 025/14 (para 3), “deployment and pre-deployment training wear” of the NWU Type III is authorized for the following commands/units. Daily wear of the NWU Type III in CONUS is not authorized.**

## **NAVADMIN 164/12**

- Joint Communications Support Element;
- United States Strategic Command, Joint Elimination Coordination Element;
- Joint Task Force Civil Support;
- Supreme Allied Commander Transformation North Atlantic Treaty Organization Headquarters (SACT HQ);
- Uniformed Services University Of the Health Sciences;
- Joint Mobile Ashore Support Terminal Pacific;
- Joint Enabling Capabilities Command (USTRANSCOM JECC);



# ***Commands Authorized Daily, Deployment and Pre-deployment Training Wear of the NWU Type II/III (Endorsed by the Navy Uniform Board)***

---

## NAVADMIN 164/12 (con't)

- Naval Sea Systems Command Diving Commands;
- U.S. Pacific Fleet Diving Commands;
- SPAWAR Center Pacific Diving Command;
- Kennedy Irregular Warfare Center
- Foreign Material Exploitation Division, Farragut Technical Analysis Center;
- Navy Medicine Support Command, Navy and Marine Corps Public Health Center;
- Naval Mine and Anti-Submarine Warfare Command;
- Aircraft Intermediate Maintenance Detachment, Sigonella, Italy;
- Navy Irregular Warfare Office;
- Fleet Combat Camera Group Pacific;
- Commander Naval Forces Europe, Detachment Maritime Ashore Support Team;
- NR Navy Combat Documentation Detachment 206;
- Commander, Tactical Air Control Group One;
- Tactical Air Control Squadron 21/22;
- Special Projects Patrol Squadron Two;
- Fleet Readiness Center Northwest;
- Navy Safety Center.





# ***Commands Authorized Daily, Deployment and Pre-deployment Training Wear of the NWU Type II/III (Endorsed by the Navy Uniform Board)***

## **NAVADMIN 025/14**

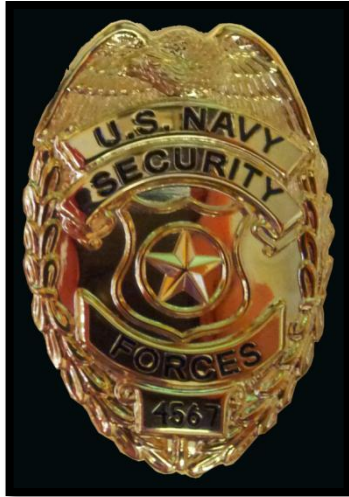
- Joint Staff J7 Coalition Warfighting Division
- United States Central Command Headquarters
- Military Sealift Command, Central Command
- Naval Strike Air Warfare Center
- Helicopter Sea Combat Wing; U.S. Pacific Fleet
- Helicopter Sea Combat Squadron TWO ONE Detachment Five
- Helicopter Sea Combat Squadron TWO FIVE Detachment Five
- Office of Military Commissions
- Fleet Logistics Support Wing, and all subordinate squadrons
- Navy Element, Defense Intelligence Agency
- Department of Defense Inspector General
- Joint Task Force – Horn of Africa
- United States Southern Command
- Navy Information Operations Command, Bahrain

**3. Per NAVADMIN 164/12 (para 6), Fleet Commanders (USFF and PACFLT) are the authorizing authority for wear of the NWU Type III for commands under their cognizance. Upon return of deployment commands will discontinue wear of the NWU Type III uniform.**



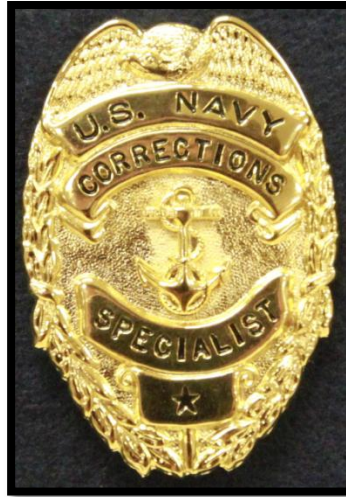
# NAVY SECURITY FORCES BADGE (METAL)

**Navy Security  
Forces**



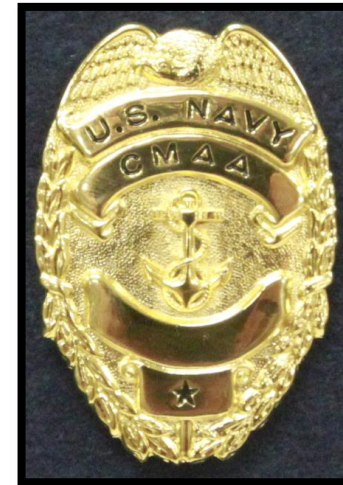
Unique Badge Specifications  
(U.S. NAVY SECURITY Embossed Lettering)  
(Raised Master-at-Arms Rating Insignia)  
(Four Digit Serial Number)

**Correction  
Specialist**



Unique Badge Specifications  
(U.S. NAVY CORRECTIONS SPECIALIST  
Embossed Lettering)  
(Raised Fouled Anchor Insignia)  
(Black Embossed Star)

**Command  
Master-at-Arms**



Unique Badge Specifications  
(U.S. NAVY CMAA Embossed Lettering)  
(Raised Fouled Anchor Insignia)  
(Black Embossed Star)

## Standard Badge Specifications

- Stamped and gold plated with raised insignias
- A right facing eagle perched atop a wreathed shield
  - Black embossing lettering
  - Dimensions 2 ½" H X 1 ¾" W





# NAVY SECURITY FORCES BADGE (EMBROIDERED)

**Navy Security  
Forces**



Unique Badge Specifications  
(U.S. NAVY SECURITY Lettering)  
(Master-at-Arms Rating Insignia)  
(Black Star)

**Correction  
Specialist**



Unique Badge Specifications  
(U.S. NAVY CORRECTIONS SPECIALIST Lettering)  
(Fouled Anchor Insignia)  
(Black Star)

**Command  
Master-at-Arms**



Unique Badge Specifications  
(U.S. NAVY CMAA Lettering)  
(Fouled Anchor Insignia)  
(Black Star)

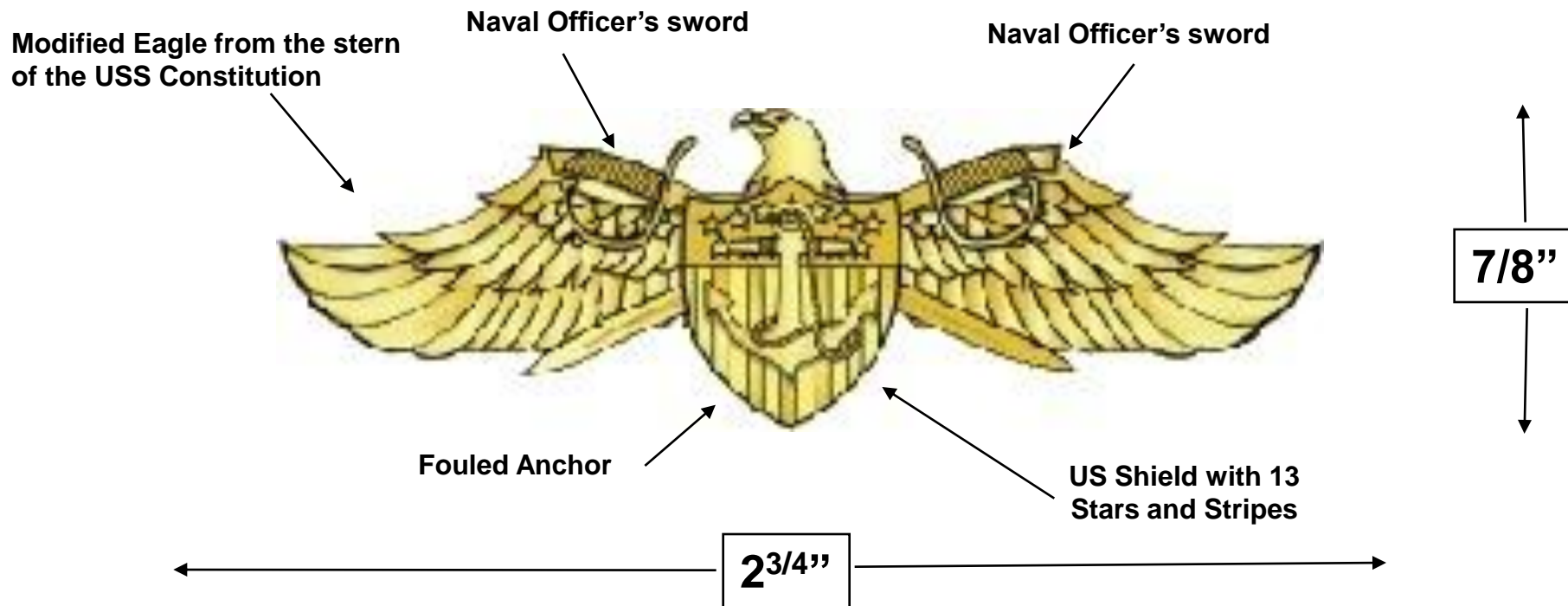
## Standard Badge Specifications

- Gold in color with black lettering
- A right facing eagle perched atop a wreathed shield
  - Dimensions 2 ½" H X 1 ¾" W



# Uniform Policy Proposal

## Qualified Strategic Sealift Warfare Breast Insignia Description



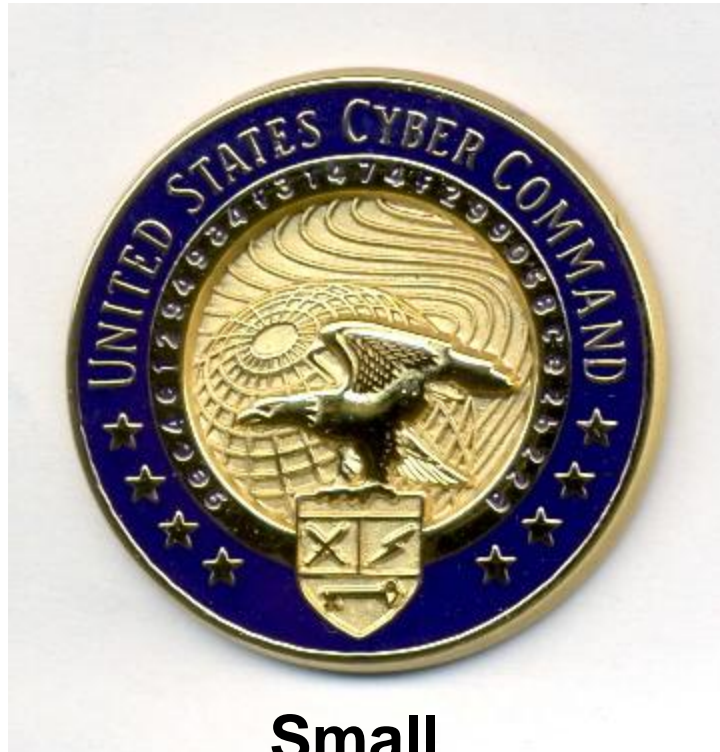
- The Qualified Strategic Sealift Warfare breast insignia is a  $2\frac{3}{4}$ " x  $\frac{7}{8}$ " gold metal pin showing a background of the Eagle from the USS Constitution's stern, crossed Naval Officer's swords and a US Shield with a fouled anchor from the US Merchant Marine Flag.
- There are two sizes of the metal pin-on Qualified Strategic Sealift Warfare Professional breast insignia, the miniature size ( $1\frac{9}{16}$ " x  $\frac{9}{16}$ ") insignia is authorized to be on uniforms requiring miniature medals.
- The insignia is authorized for wear on the Naval Officer uniforms as prescribed in the U.S. Navy Uniform Regulations.



# ***USCYBERCOM Badge***



**Large  
2"  
(Dress Uniform)**

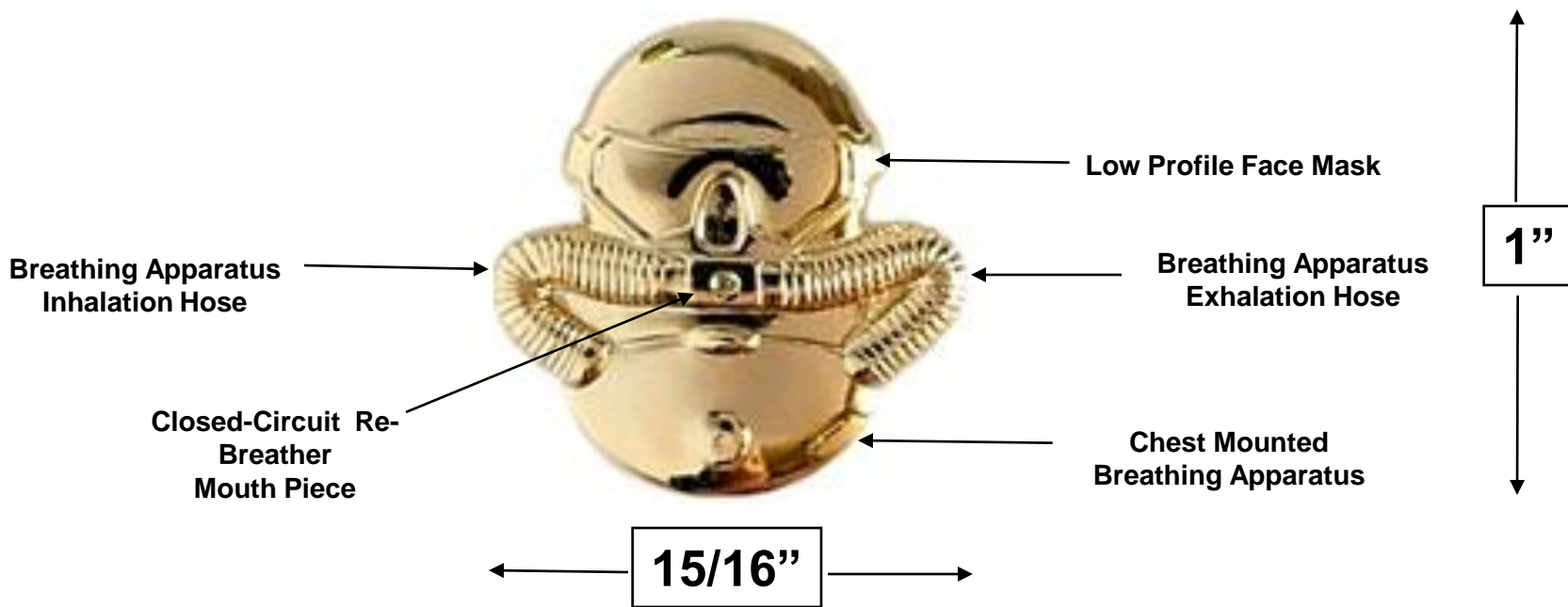


**Small  
1 1/2"  
(Service Uniform)**





## U.S. Marine Corps (USMC) Marine Combatant Diver Insignia Description

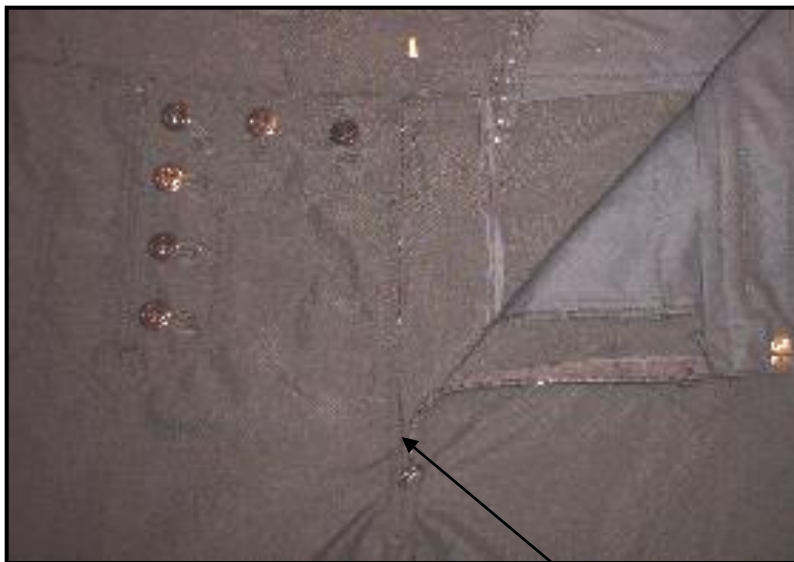


- The combatant diver insignia is a gold pin approximately 1-inch high and 15/16 inch wide, consisting of wet suit headgear and low profile facemask with chest mounted breathing apparatus.
- There are two sizes of the metal pin-on Marine Combatant Diver insignia, the miniature size (1/2" x 1/2") insignia is authorized to be worn on uniforms requiring miniature medals, and embroidered accoutrements with appropriate background per uniform regulations.
- The insignia is authorized for wear on the Naval Officer and Enlisted uniforms as prescribed in the U.S. Navy Uniform Regulation.



# ***E1-E6 Service Dress Blue (SDB)***

---



Zipper



***Male SDB (Crackerjack) uniform***



# ***E1-E6 Service Dress White (SDW)***

---







# NWU TYPE I PARKA NAMETAPE

---

*The nametape shall be sewn into the left pocket flap of the parka, centered, ¼ inch above the bottom of the flap.*





# ***Maternity Blouse***

---





# ***NAVAL WORKING UNIFORM TYPE I OPTIONAL UNIFORM COMPONENT***

---

