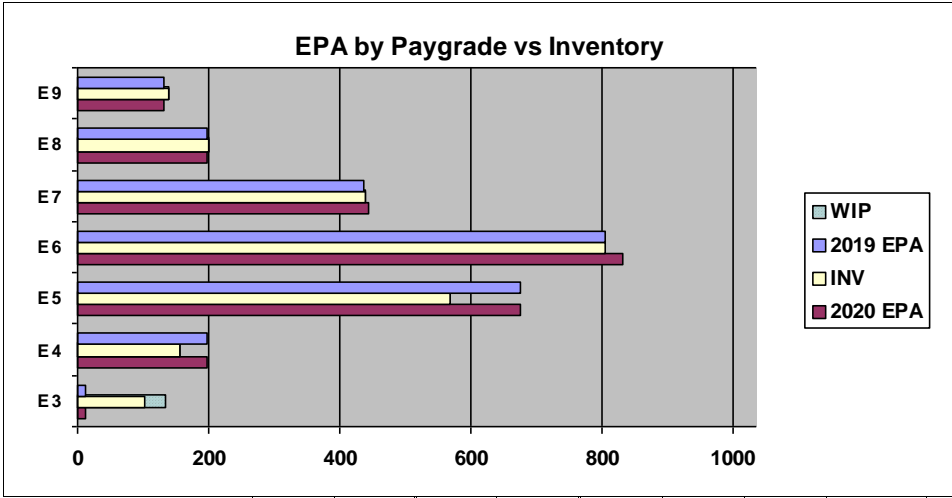
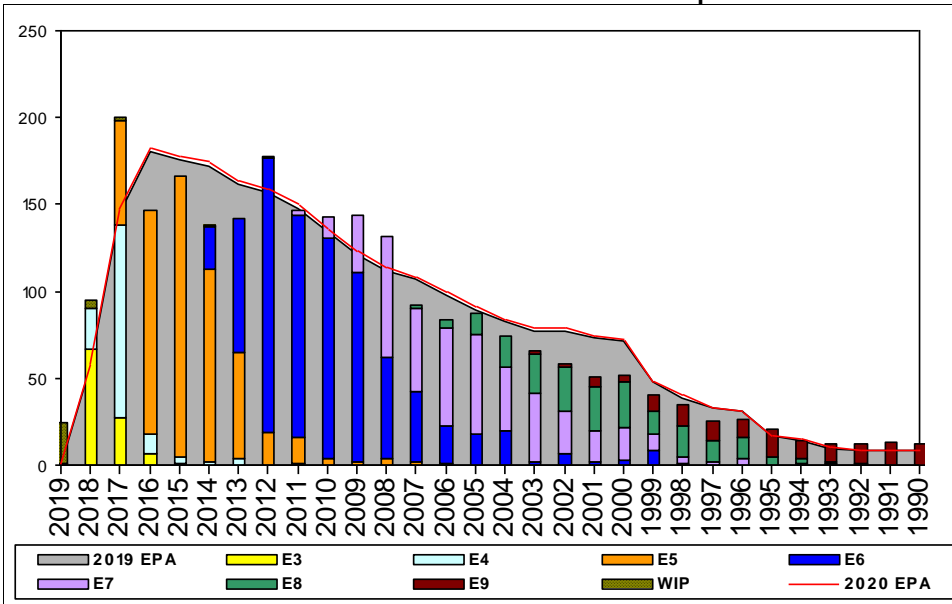


Special Warfare Operator - E300



	E1-3	E4	E5	E6	E7	E8	E9	TOTAL
% INV to FY19 EPA	936%	79%	84%	100%	100%	102%	107%	98%
EPA (FY19)	11	197	675	804	437	198	131	2453
INVENTORY	103	156	569	804	438	201	140	2411
EPA (FY20)	12	197	675	833	444	198	131	2490
% INV to FY20 EPA	858%	79%	84%	97%	99%	102%	107%	97%
INV + WIP / FY19 EPA	1218%							100%
INVENTORY	134	31	← E-3 and Below WIP					2442
INV + WIP / FY20 EPA	1117%							98%

Sea Shore Flow			FORCE STRUCTURE MANNING TO BA									
TOUR	SEA	SHORE	PG	SEA	INV	BA	SHORE	INV	BA	SEA + SHORE	TOTAL INV	TOTAL BA
1ST	60	36	E1-3	0.0%	17		0.0%	1		#Div/0!	18	
2ND	60	36	E4	63.2%	108	171	100.0%	1	1	63.4%	109	172
3RD	48	36	E5	82.3%	544	661	86.7%	13	15	82.4%	557	676
4TH	48	36	E6	104.6%	633	605	77.6%	128	165	98.8%	761	770
5TH	36	36	E7	98.8%	330	334	101.1%	95	94	99.3%	425	428
6TH	36	36	E8	110.4%	148	134	82.0%	50	61	101.5%	198	195
7TH	36	36	E9	101.4%	73	72	112.3%	64	57	106.2%	137	129
Total				93.7%	1853	1977	89.6%	352	393	93.0%	2205	2370

ADV OPP. (Cycles 241/242/243)							
All-Navy 10yr Avg	E1-3	E4	E5	E6	E7	E8	E9
	TIR	36.3%	22.4%	13.6%	22.0%	11.6%	13.1%
All-Navy	TIR	32.7%	17.9%	11.5%	25.9%	12.9%	11.1%
SO	TIR	100.0%	70.0%	19.0%	30.4%	19.1%	25.2%

Zone Info	ZONE A	ZONE B	ZONE C	ZONE D	ZONE E	ALL ZONES
FY19 Manning:	101.0%	104.0%	103.0%	82.0%	97.0%	98.0%
FYTD RENL Rate:	99.3%	79.6%	84.6%	98.5%	38.8%	83.3%
FY20 Manning:	100.0%	103.0%	101.0%	81.0%	95.0%	96.8%

NOTES

Current SO rating manned at 96.2%

No early separation or convert out opportunity for SO (O26A, O23A) rated sailors. Fleet Convert in opportunity is extremely competitive and is ONLY available for E5 and below in year groups 2013, 2014 and 2016. 2019 PACT rating (SN, AN, FN) Sailors may also apply.

Rating criteria/physical requirements set forth in MILPERSMAN 1220-300 and 1220-410.

Physical Screening Tests (PST) must be coordinated through and signed by the NSW Assessment Team and completion documented IAW MILPERSMAN 1220-300 Exhibit 2. PST schedules can be viewed at www.sealswcc.com.

SO package screening for selection to attend SO "A" school is quarterly. Deadline for package submission will be 21 NOV 2019 AND 19FEB 2020. Packages received after the deadline will be stacked for the next selection dates.

Allow 30 days from package submission deadline to allow package processing before inquiring about the status of conversion.

See www.sealswcc.com and "From Fleet to Naval Special Warfare" <https://www.sealswcc.com/navy-seal-podcast.html> for more information