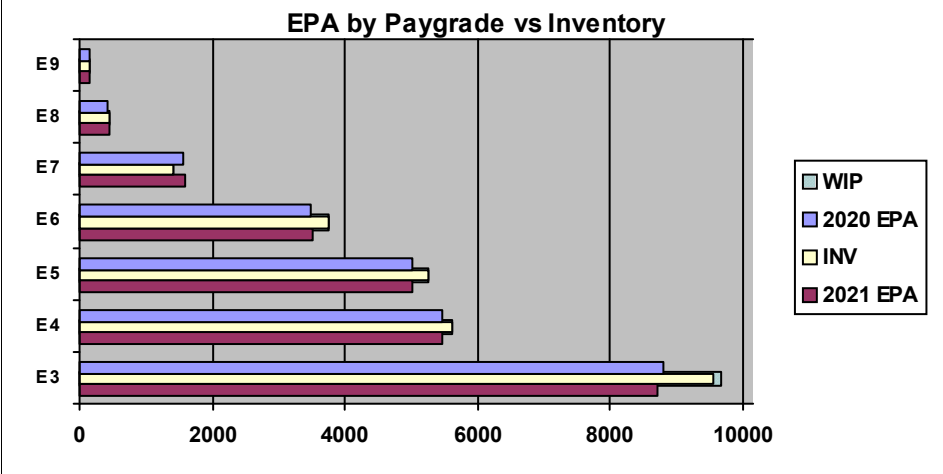
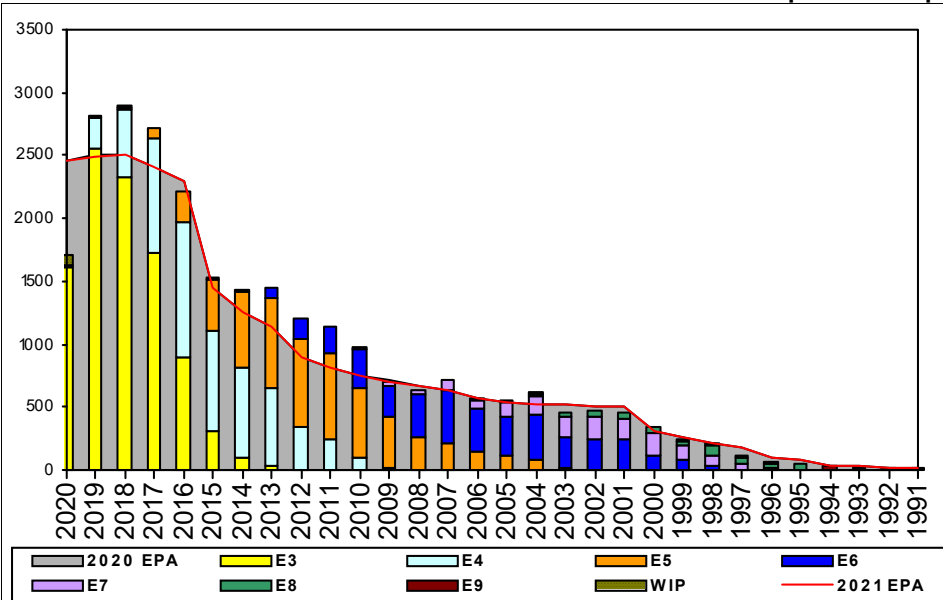


Hospital Corpsman - G000



	E1-3	E4	E5	E6	E7	E8	E9	TOTAL
% INV to FY20 EPA	109%	103%	105%	108%	90%	108%	112%	105%
EPA (FY20)	8796	5466	5025	3476	1569	431	146	24909
INVENTORY	9558	5630	5260	3758	1417	465	163	26251
EPA (FY21)	8721	5453	5014	3511	1595	437	151	24882
% INV to FY21 EPA	110%	103%	105%	107%	89%	106%	108%	106%
INV + WIP / FY20 EPA	110%							106%
INVENTORY	9668	110 ← E-3 and Below WIP						26361
INV + WIP / FY21 EPA	111%							106%

Sea Shore Flow		
TOUR	SEA	SHORE
1ST		
2ND		
3RD		
4TH		
5TH		
6TH		
7TH		

FORCE STRUCTURE MANNING TO BA										
PG	SEA	INV	BA	SHORE	INV	BA	SEA + SHORE	TOTAL INV	TOTAL BA	
E1-3	57.7%	1128	1954	126.0%	6560	5208	107.3%	7688	7162	
E4	76.7%	1715	2236	97.3%	3386	3481	89.2%	5101	5717	
E5	87.0%	1709	1965	99.7%	3003	3013	94.7%	4712	4978	
E6	113.4%	1351	1191	94.0%	2127	2262	100.7%	3478	3453	
E7	70.9%	467	659	95.3%	871	914	85.1%	1338	1573	
E8	148.4%	190	128	81.4%	245	301	101.4%	435	429	
E9	207.7%	27	13	94.9%	130	137	104.7%	157	150	
Total	80.9%	6587	8146	106.6%	16322	15316	97.6%	22909	23462	

ADV OPP. (Cycles 241/242/244)							
All-Navy 10yr Avg	E1-3	E4	E5	E6	E7	E8	E9
TIR		34.9%	22.1%	13.9%	22.0%	11.6%	13.1%
All-Navy	TIR	21.9%	15.6%	6.7%	25.9%	12.9%	11.1%
HM	TIR	6.0%	6.0%	3.0%	20.5%	9.3%	9.7%

Zone Info

	ZONE A	ZONE B	ZONE C	ZONE D	ZONE E	ALL ZONES
FY20 Manning:	101.0%	127.0%	109.0%	99.0%	88.0%	105.0%
FYTD RENL Rate:	49.9%	63.9%	84.1%	91.7%	31.3%	62.5%
FY21 Manning:	101.0%	128.0%	110.0%	99.0%	88.0%	105.5%

NOTES

Reenlistment Opportunity:

In-rate quotas approved based on performance, YG & NEC.

Conversion Opportunity:

Convert In: Not available at this time due to overmanning in the rate.

Convert Out: Based on YG, PG & NEC.

EETP Opportunity:

1000 quotas are available for YGs 2007-2017 who have SEAOS between 01OCT2022-30SEP2023. Eligible NECs are: 0000, L03A, L06A, L07A, L08A, L09A, L12A, L13A, L25A, L33A, L36A, and L38A.

C Schools:

FY 21 is an excellent year to attend C school, ample seats remain for the majority of schools. Contact your detailer for more info.

Contact HM Community Manager at HM_ECM@navy.mil for additional information.

Data Source: NMPBS(Inv)/NRMS(RE Rate)/N12(EPA/SSF)/BUPERS3(Adv Op)

As of Date: 02-Oct-20