

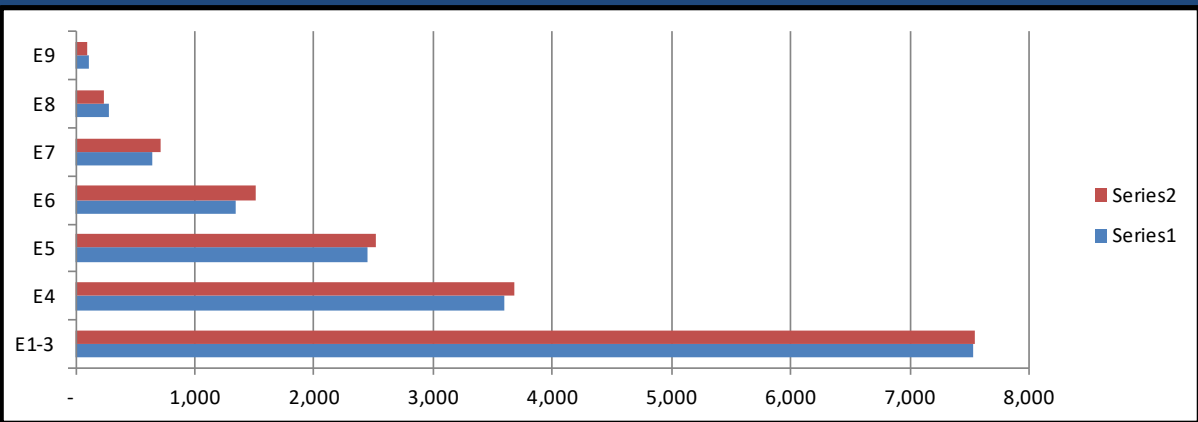
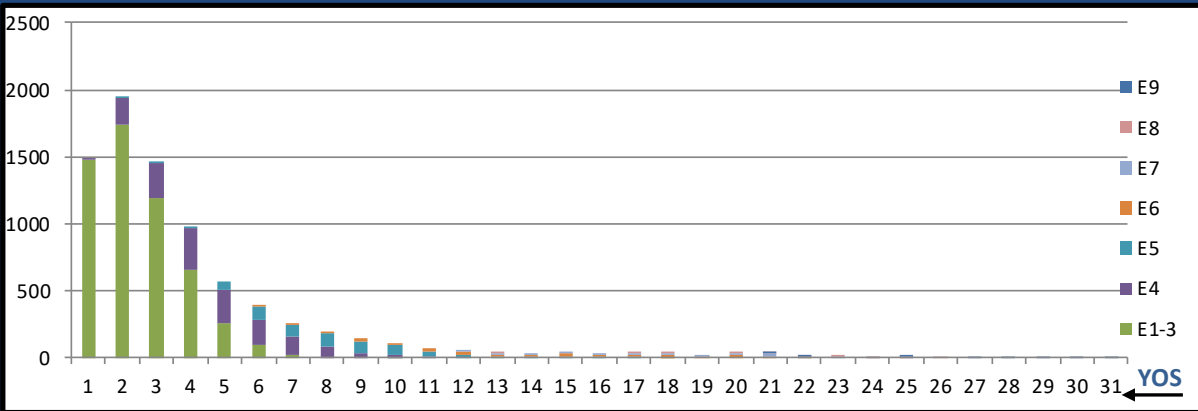
OCTOBER 2020 HM MANNING SNAPSHOT

HM NEC MANNING 7 OCT 2020	NEC	BA	INV WITH PRIMARY NEC	INV/BA PRIMARY NEC	PRODUCTION NOTES	TOTAL INV W/NEC	TOTAL NEC INV/BA
SAR TECH	L00A	121	133	109.9%		134	110.7%
SUB IDC	L01A	213	184	86.4%		184	86.4%
FMF RECON IDC	L02A	248	171	69.0%		171	69.0%
FIELD MED TECH	L03A	6236	8344	133.8%		12804	205.3%
AERO MED TECH	L04A	519	490	94.4%	Train to L00A and L07A	628	121.0%
RAD HEALTH TECH	L05A	89	88	98.9%		90	101.1%
CV TECH	L06A	61	80	131.1%		90	147.5%
AERO PHYS TECH	L07A	86	90	104.7%		92	107.0%
BIOMED EQ TECH	L08A	452	491	108.6%		492	108.8%
NUC MED TECH	L09A	20	26	130.0%		29	145.0%
SURFACE IDC	L10A	1234	1059	85.8%		1061	86.0%
FMF RECON MED TECH	L11A	12	38	316.7%	Train to L02A	49	408.3%
PREV MED TECH	L12A	681	669	98.2%		677	99.4%
HEMO TECH	L13A	13	15	115.4%		15	115.4%
OPHTH SURG TECH	L14A	11	13	118.2%		13	118.2%
ULTRASOUND TECH	L15A	20	18	90.0%		18	90.0%
MAMO TECH	L16A	12	12	100.0%		12	100.0%
ADV X-RAY TECH	L17A	612	617	100.8%	Train to L15A & L16A	649	106.0%
END TECH	L18A	21	23	109.5%		24	114.3%
OPTICIAN	L19A	161	158	98.1%		168	104.3%
PT TECH	L20A	194	200	103.1%		201	103.6%
OT TECH	L21A	14	20	142.9%		20	142.9%
PHARM TECH	L22A	604	595	98.5%		607	100.5%
SURG TECH	L23A	1058	815	77.0%	Train to L14A	827	78.2%
BEHAV HLTH	L24A	439	318	72.4%		323	73.6%
UROLOGY TECH	L25A	57	63	110.5%		64	112.3%
ORTHOPEDIC TECH	L26A	143	131	91.6%		133	93.0%
DIVE MED TECH	L27A	116	101	87.1%	Train to L28A	102	87.9%
DIVE IDC	L28A	105	90	85.7%		90	85.7%
MORTICIAN	L29A	14	11	78.6%		11	78.6%
HISTO TECH	L30A	30	26	86.7%		27	90.0%
MED LAB TECH	L31A	1092	999	91.5%		1006	92.1%
RES THER TECH	L32A	175	151	86.3%		151	86.3%
DENTAL ASSISTANT	L33A	1480	1694	114.5%		1733	117.1%
DENT HYGIENIST	L35A	96	72	75.0%		72	75.0%
DENT LAB BASIC	L36A	103	122	118.4%	Train to L37A	126	122.3%
DENT LAB ADV	L37A	96	87	90.6%		88	91.7%
DENT ORALMAX	L38A	8	11	137.5%		11	137.5%
DRUG & ALCOHOL COUNS. INTERN	L39A	93	52	55.9%	Train to L40A BA Growth FY21	53	57.0%
DRUG & ALCOHOL COUNSELOR	L40A	193	16	8.3%	BA Growth FY21	16	8.3%

		BA	INV	INV/BA
General Duty HM	0000/L03A	15952	16302	102.2%
NECs (less L03A)		10696	9949	93.0%
NOS G000 TOTAL		26648	26251	98.5%

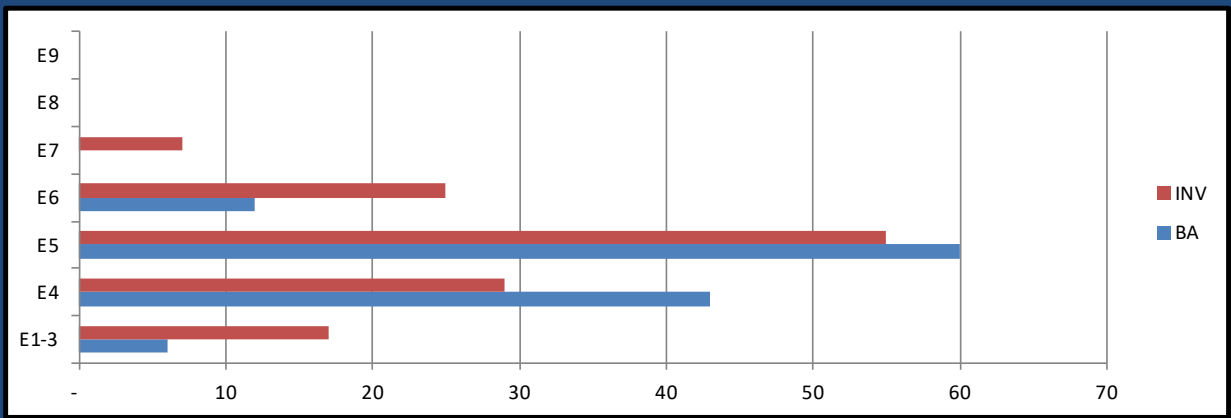
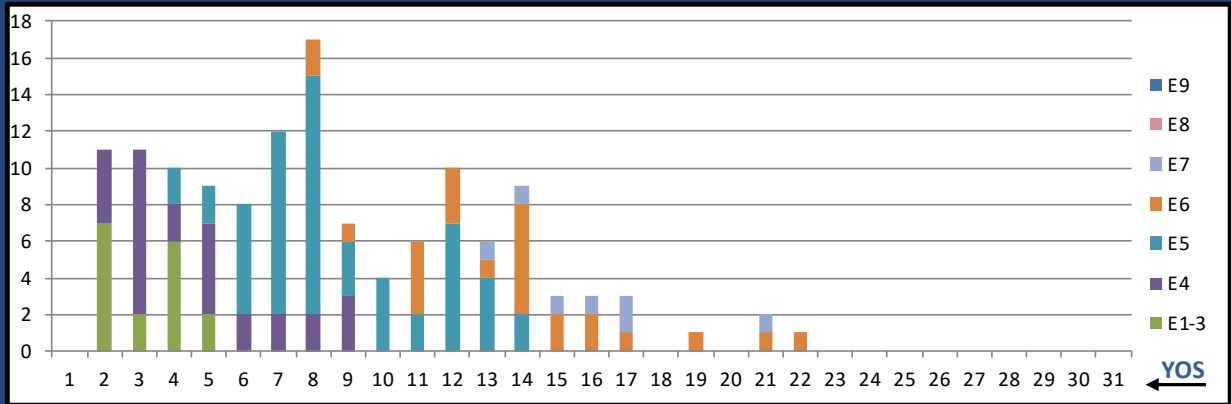
Critically Undermanned <85% Undermanned 85%-94% Healthy 95%-104% Overmanned >105%

G000 GEN DUTY (0000/L03A)



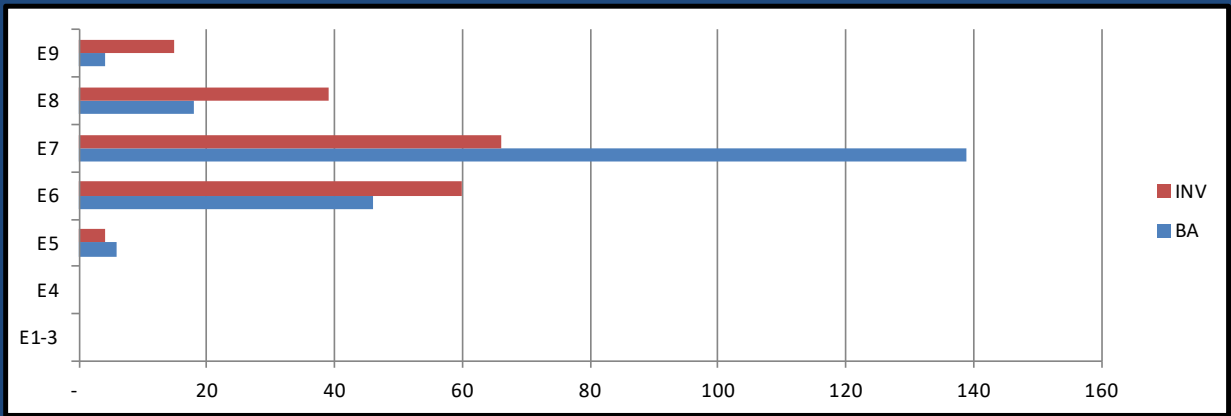
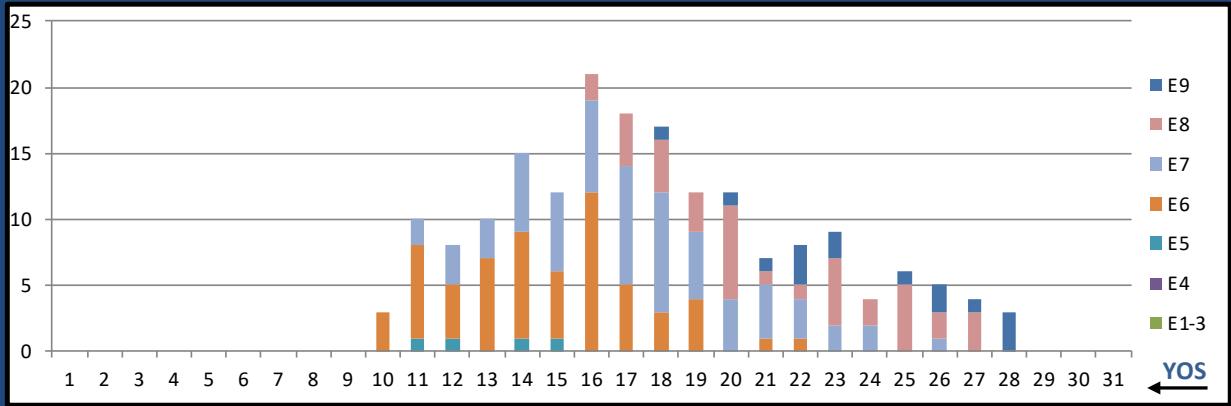
	E1-3	E4	E5	E6	E7	E8	E9	Total
%INV to BA	100%	103%	103%	113%	111%	83%	78%	102%
BA	7,531	3,590	2,448	1,336	646	285	116	15,952
Total Inventory	7,549	3,683	2,521	1,504	717	237	91	16,302
SJA Inventory	101%	106%	106%	106%	106%	100%	100%	

LOOA SAR TECH



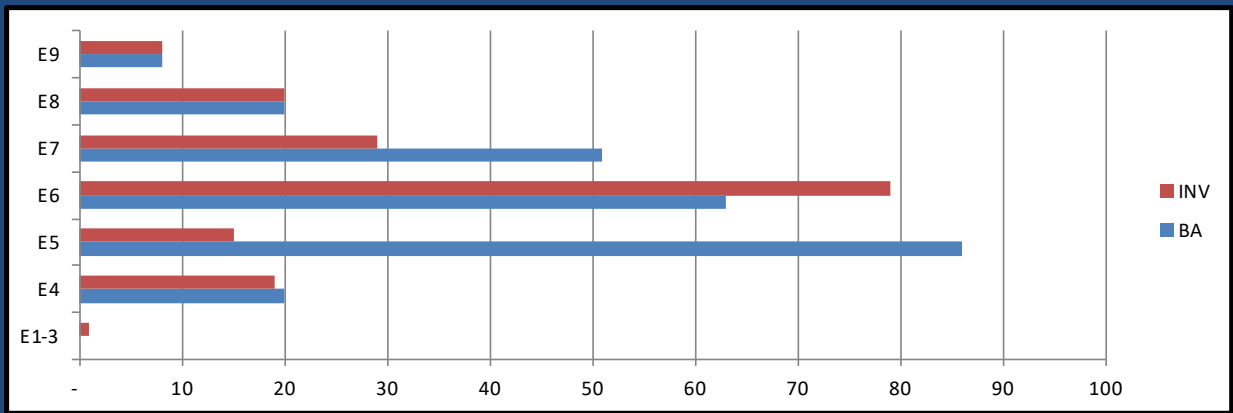
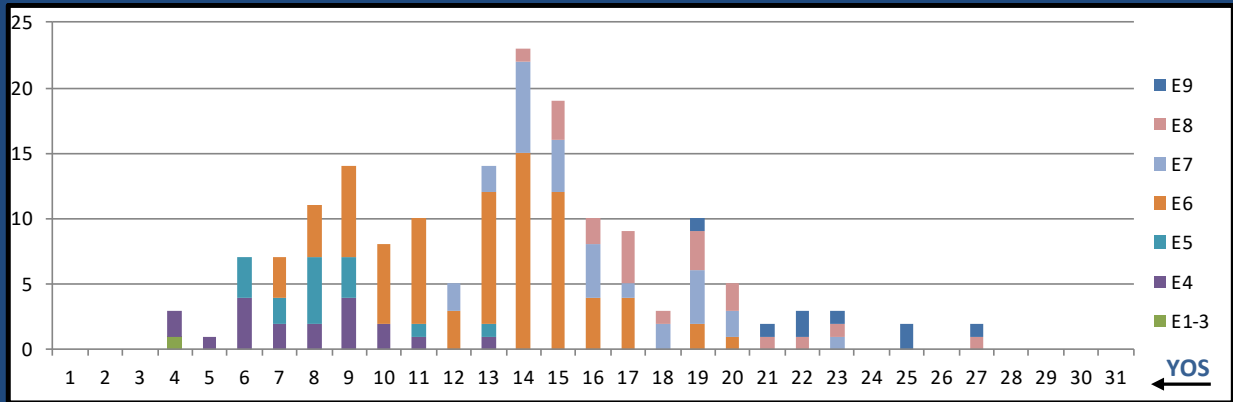
	E1-3	E4	E5	E6	E7	E8	E9	Total
%INV to BA	283%	67%	92%	208%	0%	0%	0%	110%
BA	6	43	60	12	-	-	-	121
Total Inventory	17	29	55	25	7	-	-	133
SJA Inventory	94%		111%		#DIV/0!			

L01A SUB FORCE IDC



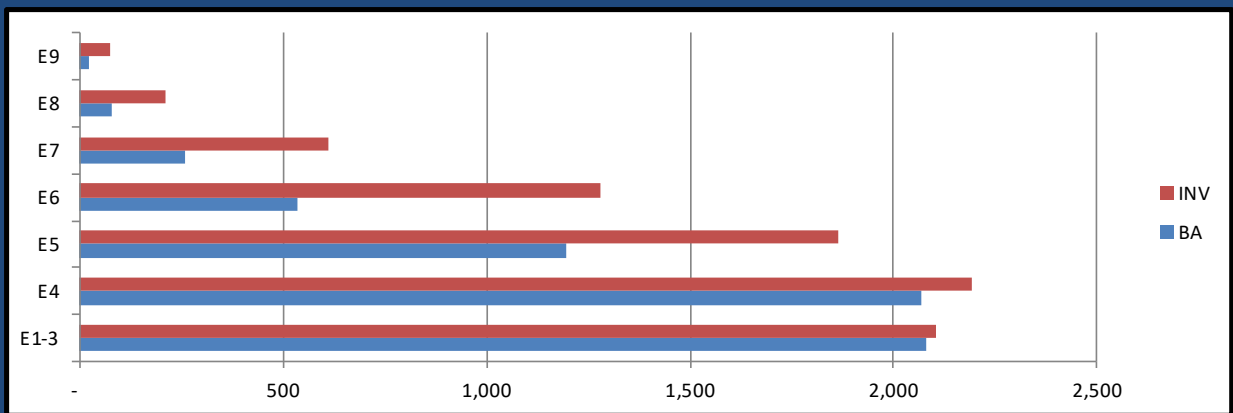
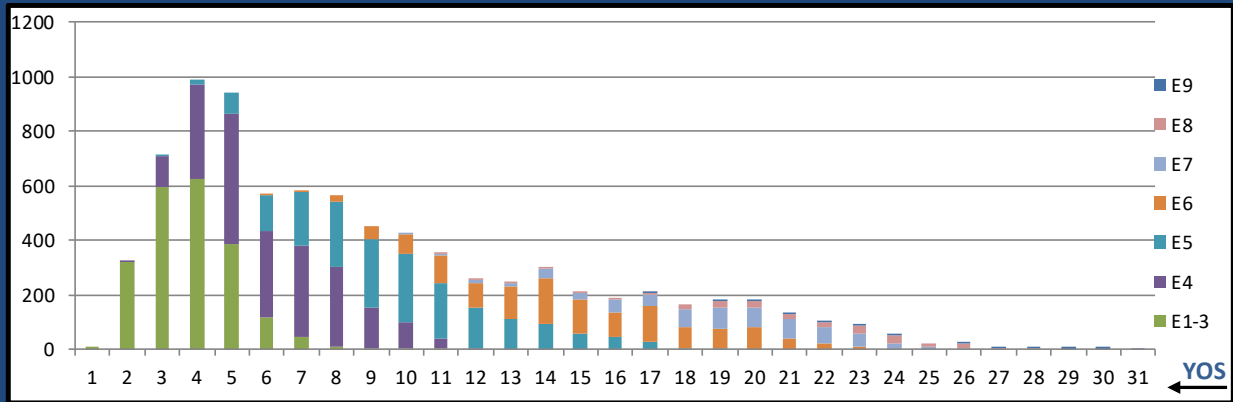
	E1-3	E4	E5	E6	E7	E8	E9	Total
%INV to BA	0%	0%	67%	130%	47%	217%	375%	86%
BA	-	-	6	46	139	18	4	213
Total Inventory	-	-	4	60	66	39	15	184
SJA Inventory	#DIV/0!		123%		75%			

L02A FMF RECON IDC



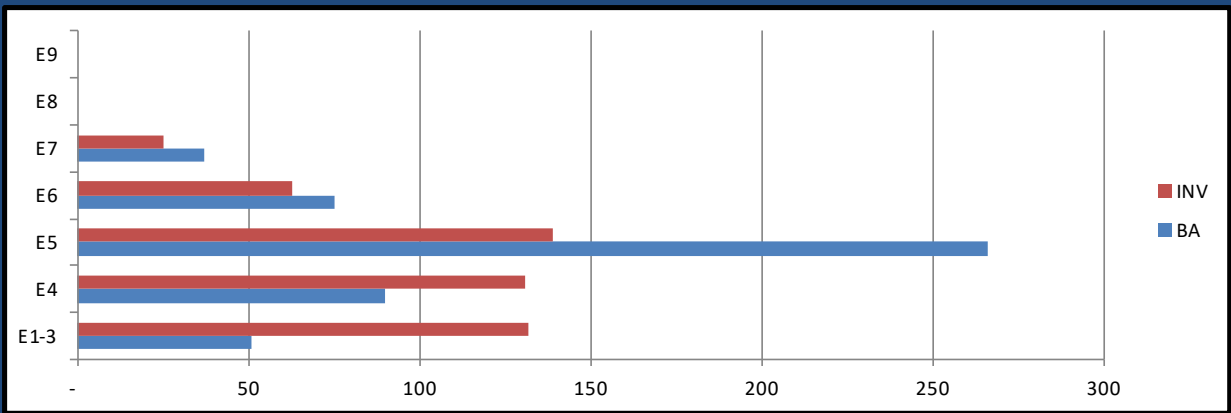
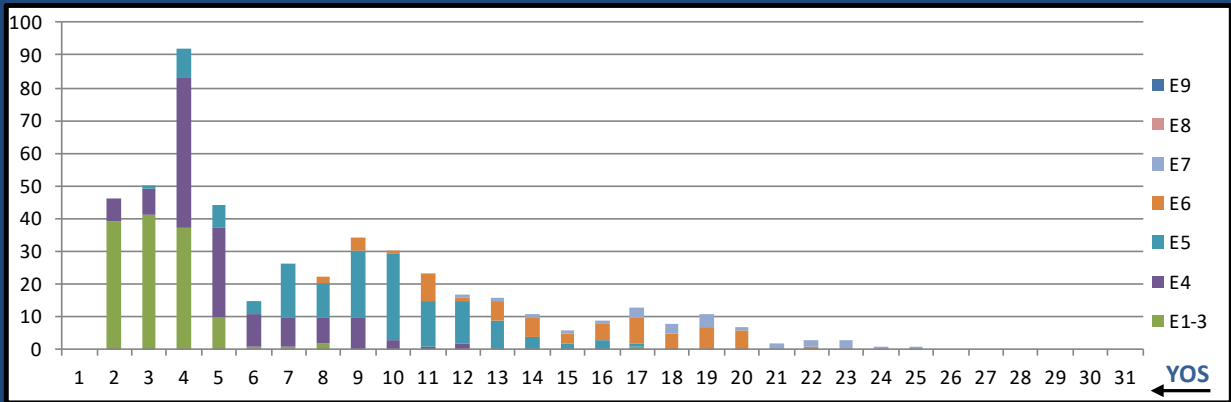
	E1-3	E4	E5	E6	E7	E8	E9	Total
% INV to BA	0%	95%	17%	125%	57%	100%	100%	69%
BA	-	20	86	63	51	20	8	248
Total Inventory	1	19	15	79	29	20	8	171
SJA Inventory	100%		63%		72%			

L03A FLD MED TECH



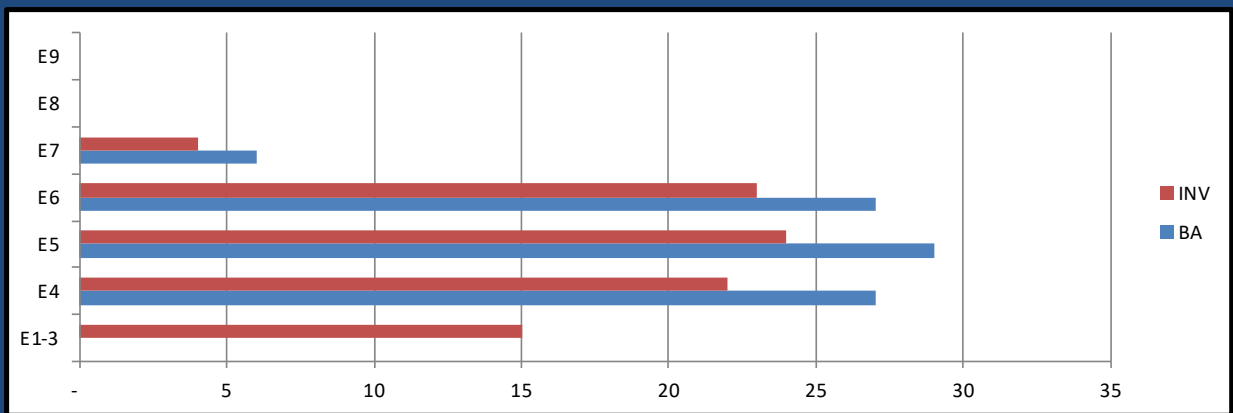
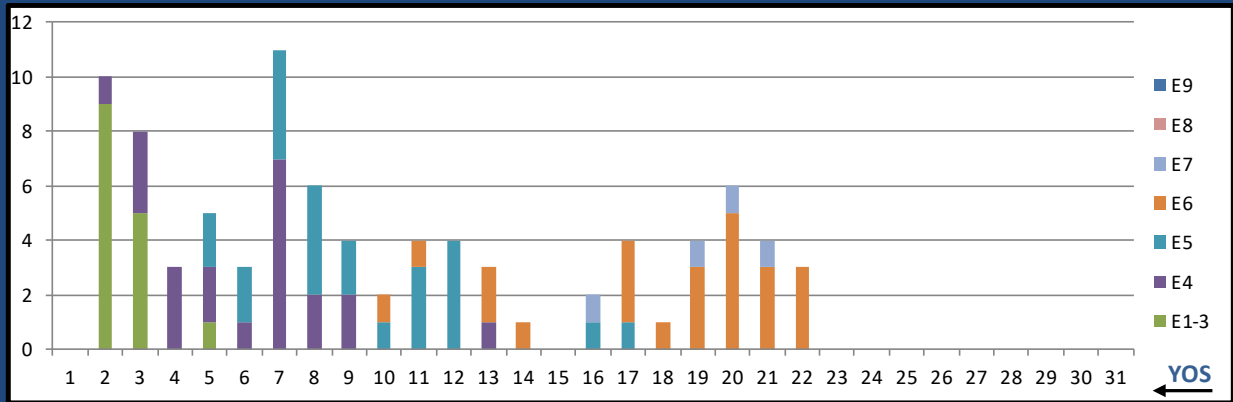
	E1-3	E4	E5	E6	E7	E8	E9	Total
% INV to BA	101%	106%	156%	240%	237%	266%	335%	134%
BA	2,079	2,068	1,194	534	258	80	23	6,236
Total Inventory	2,104	2,193	1,865	1,280	612	213	77	8,344
SJA Inventory	104%		182%		250%			

L04A AERO MED TECH



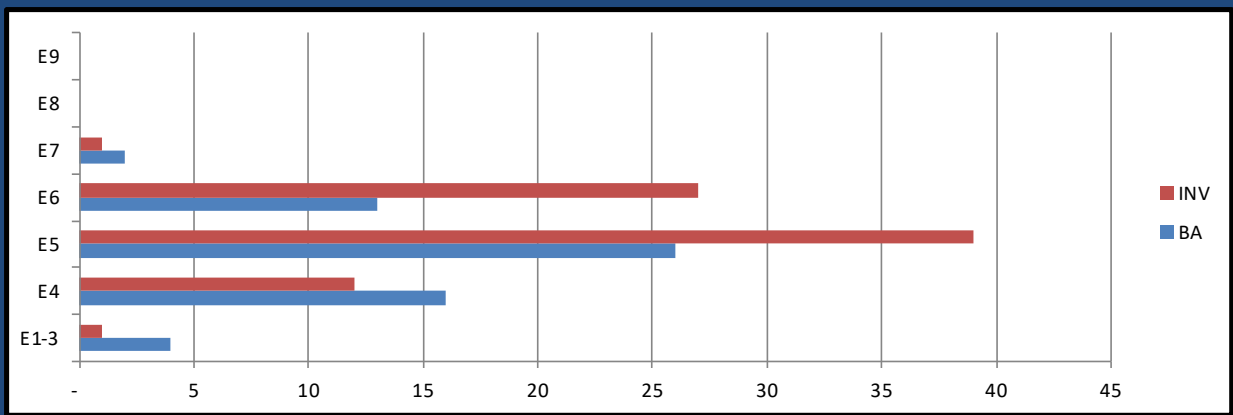
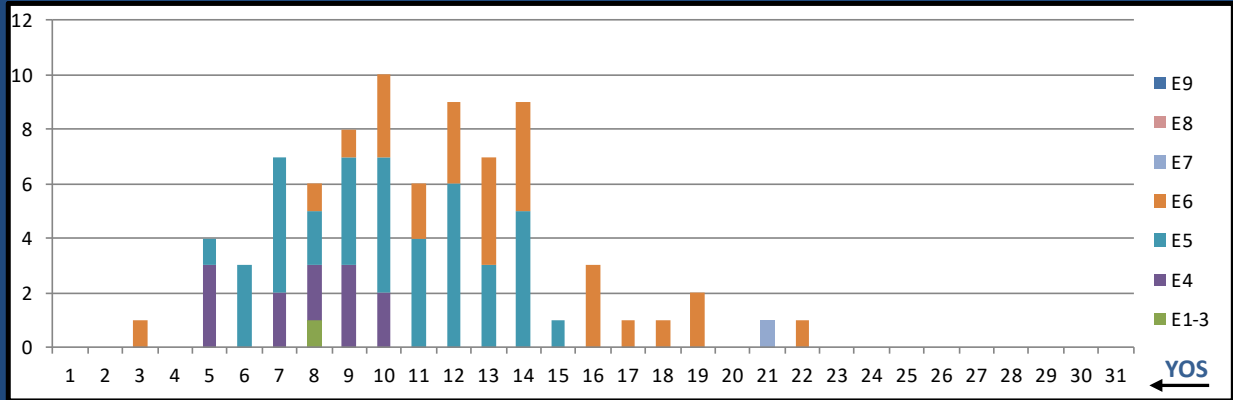
	E1-3	E4	E5	E6	E7	E8	E9	Total
% INV to BA	259%	146%	52%	84%	68%	0%	0%	94%
BA	51	90	266	75	37	-	-	519
Total Inventory	132	131	139	63	25	-	-	490
SJA Inventory	187%		59%			68%		

L05A RAD HLTH TECH



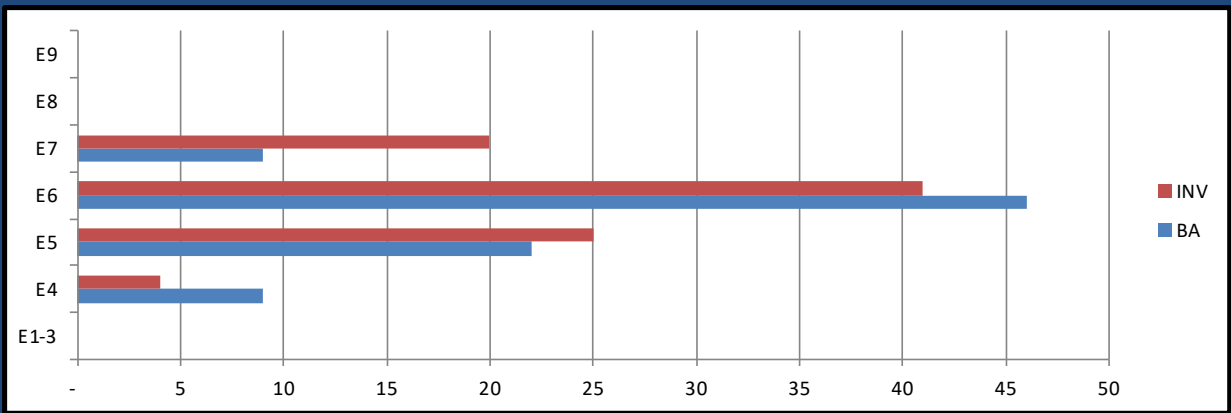
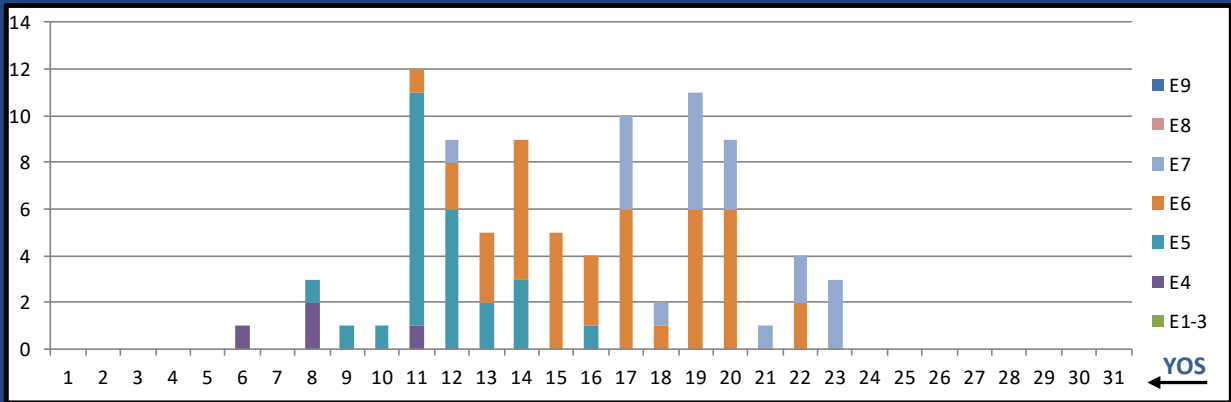
	E1-3	E4	E5	E6	E7	E8	E9	Total
% INV to BA	0%	81%	83%	85%	67%	0%	0%	99%
BA	-	27	29	27	6	-	-	89
Total Inventory	15	22	24	23	4	-	-	88
SJA Inventory	137%		84%		67%			

L06A CV TECH



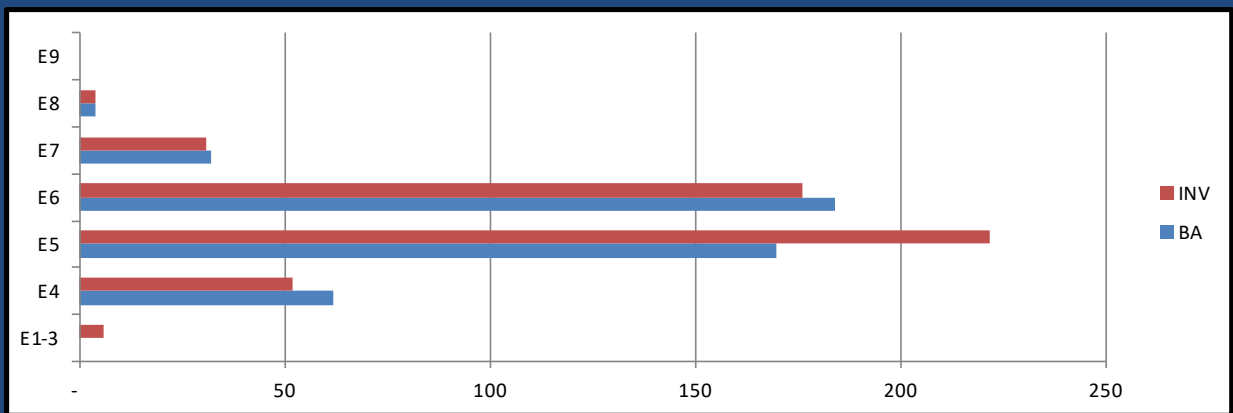
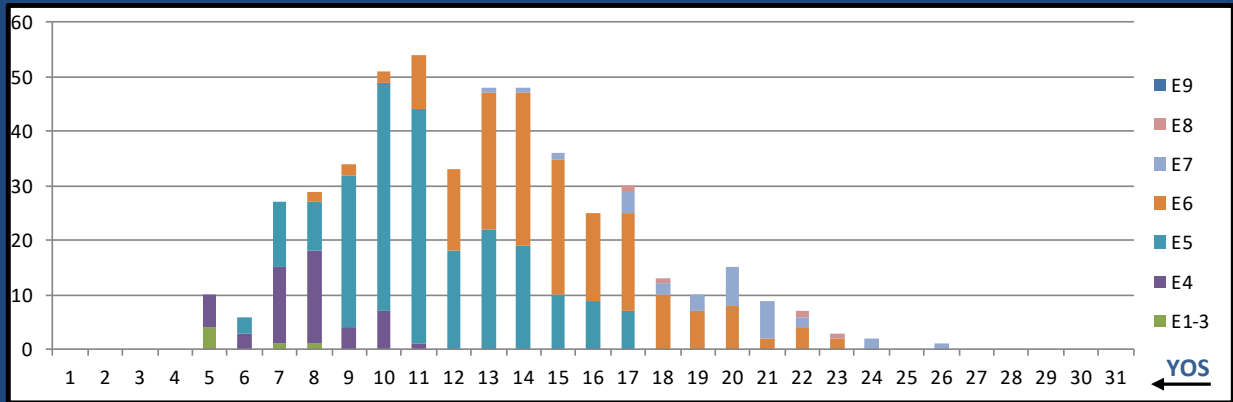
	E1-3	E4	E5	E6	E7	E8	E9	Total
% INV to BA	25%	75%	150%	208%	50%	0%	0%	131%
BA	4	16	26	13	2	-	-	61
Total Inventory	1	12	39	27	1	-	-	80
SJA Inventory	65%		169%		50%			

L07A AERO PHYS TECH



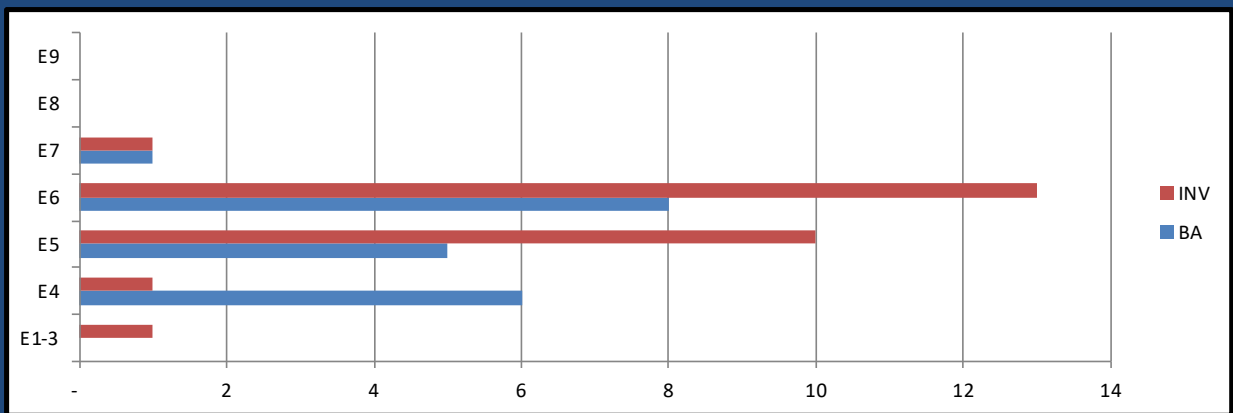
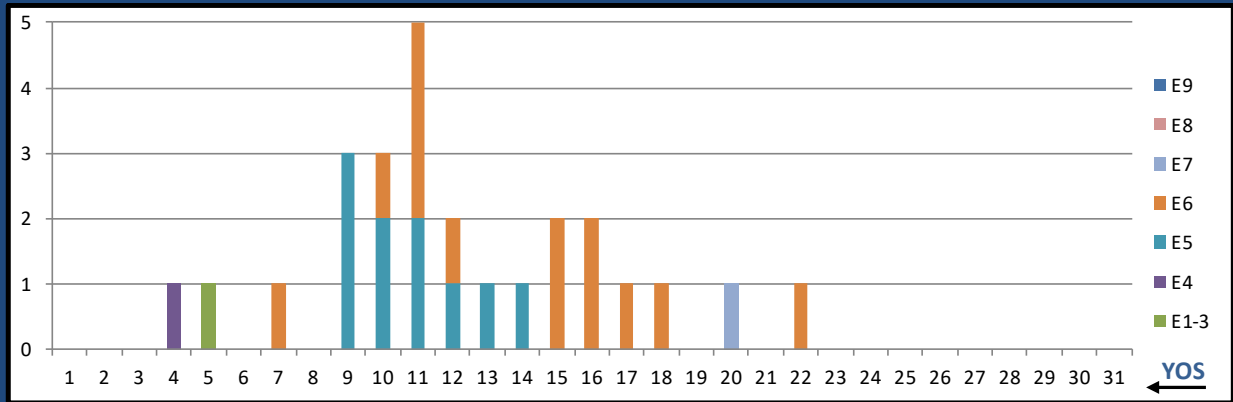
	E1-3	E4	E5	E6	E7	E8	E9	Total
% INV to BA	0%	44%	114%	89%	222%	0%	0%	105%
BA	-	9	22	46	9	-	-	86
Total Inventory	-	4	25	41	20	-	-	90
SJA Inventory	44%		97%		222%			

L08A BIOMED EQ TECH



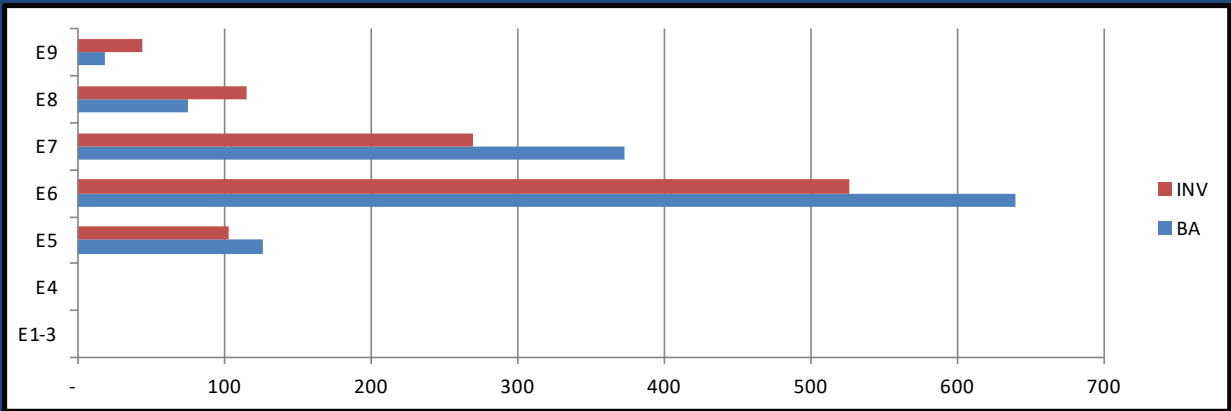
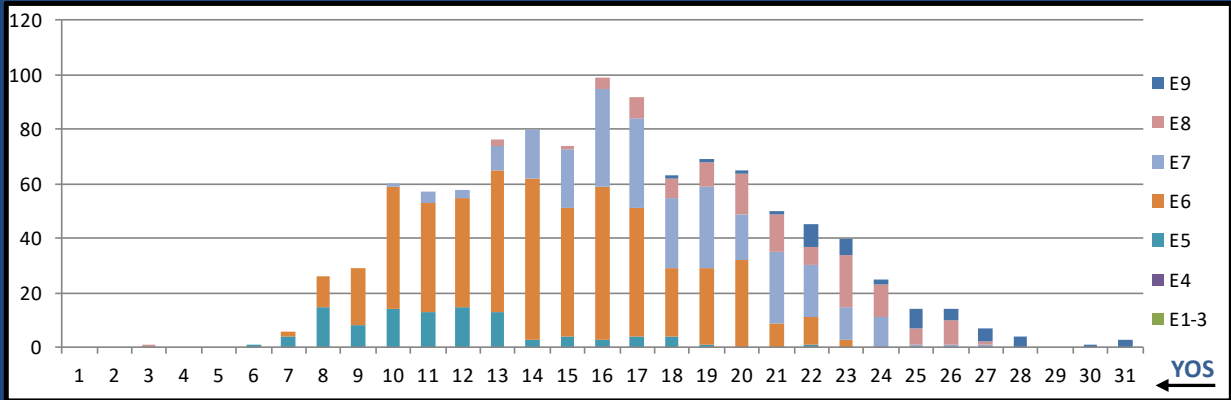
	E1-3	E4	E5	E6	E7	E8	E9	Total
% INV to BA	0%	84%	131%	96%	97%	100%	0%	109%
BA	-	62	170	184	32	4	-	452
Total Inventory	6	52	222	176	31	4	-	491
SJA Inventory	94%		112%		97%			

L09A NUC MED TECH



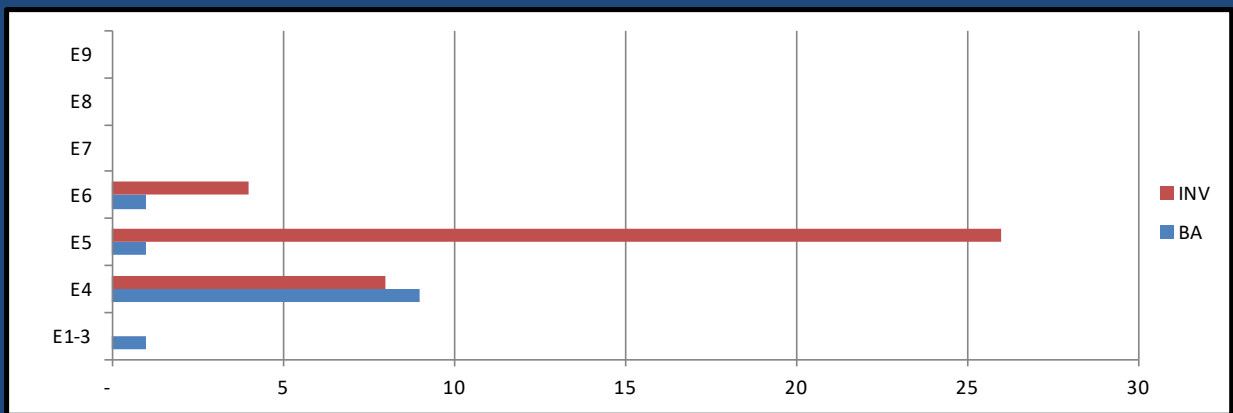
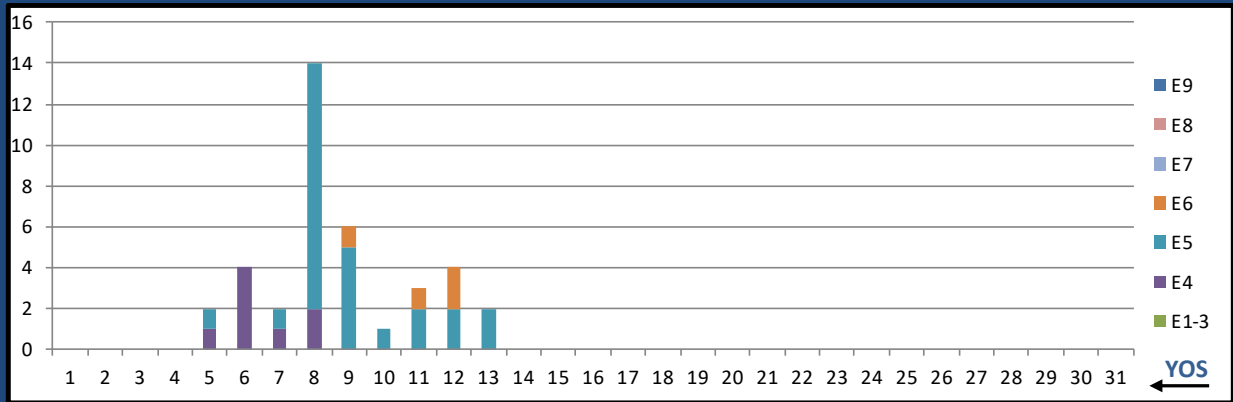
	E1-3	E4	E5	E6	E7	E8	E9	Total
% INV to BA	0%	17%	200%	163%	100%	0%	0%	130%
BA	-	6	5	8	1	-	-	20
Total Inventory	1	1	10	13	1	-	-	26
SJA Inventory	33%		177%		100%			

L10A SURFACE FORCE IDC



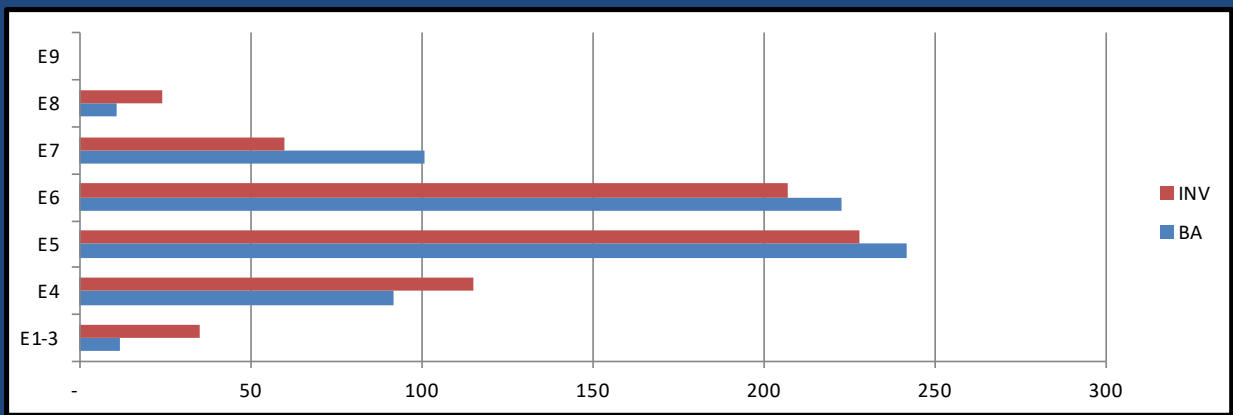
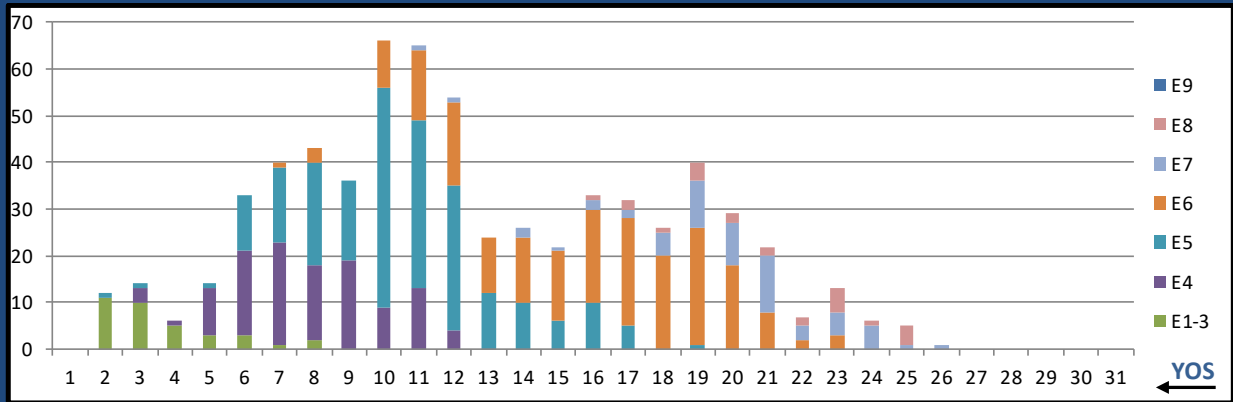
	E1-3	E4	E5	E6	E7	E8	E9	Total
% INV to BA	0%	0%	81%	82%	72%	153%	232%	86%
BA	-	-	127	640	373	75	19	1,234
Total Inventory	-	-	103	527	270	115	44	1,059
SJA Inventory	#DIV/0!		82%		92%			

L11A FMF RECON MED TECH



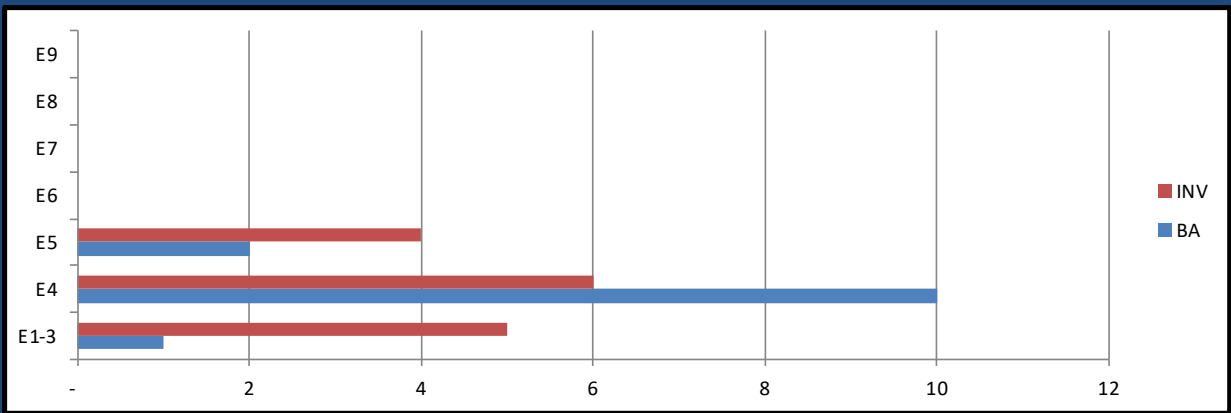
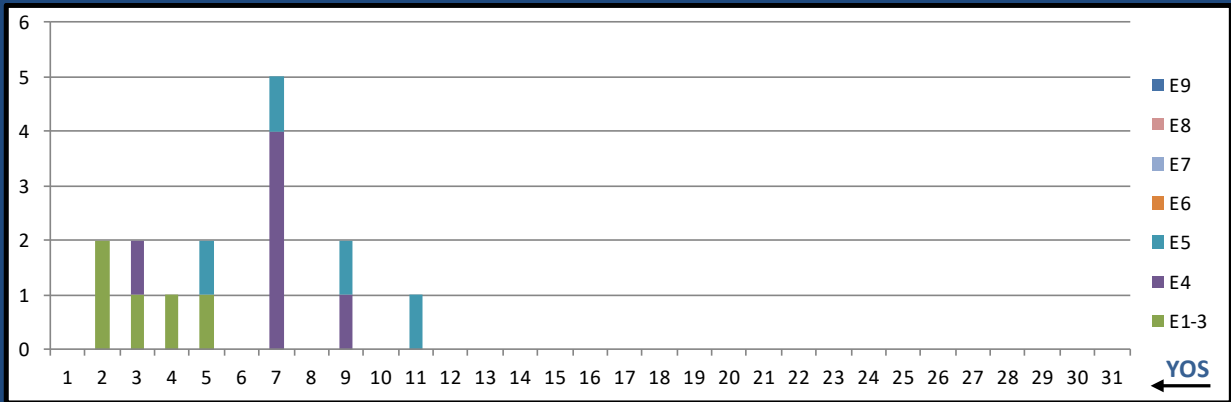
	E1-3	E4	E5	E6	E7	E8	E9	Total
% INV to BA	0%	89%	2600%	400%	0%	0%	0%	317%
BA	1	9	1	1	-	-	-	12
Total Inventory	-	8	26	4	-	-	-	38
SJA Inventory	80%		1500%		#DIV/0!			

L12A PREV MED TECH



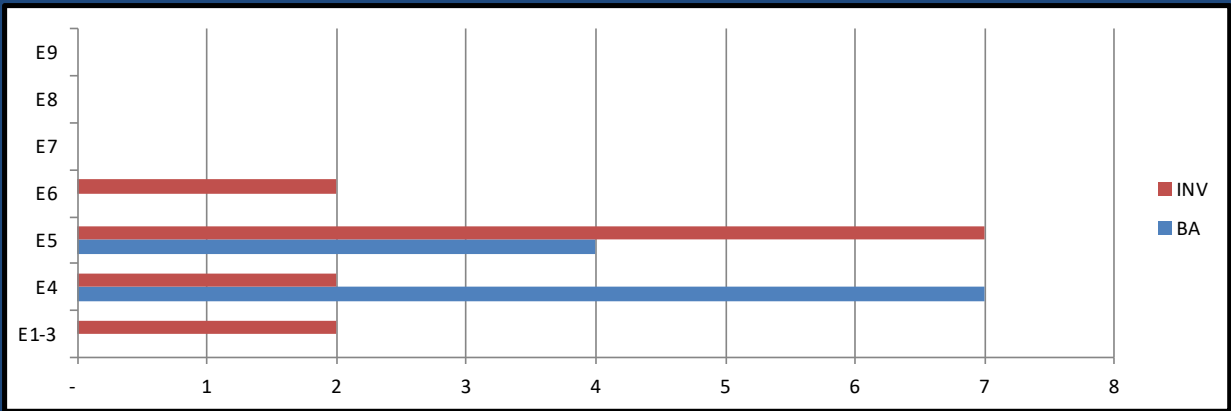
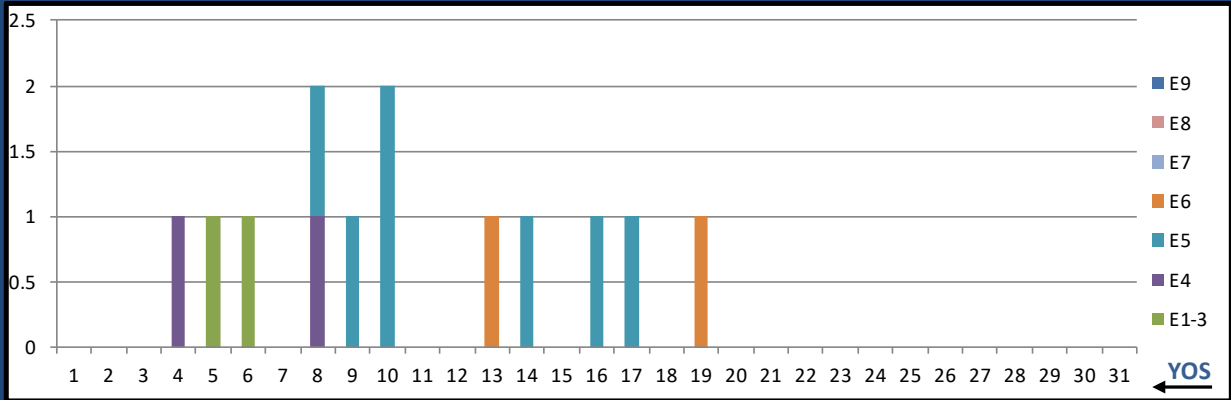
	E1-3	E4	E5	E6	E7	E8	E9	Total
% INV to BA	292%	125%	94%	93%	59%	218%	0%	98%
BA	12	92	242	223	101	11	-	681
Total Inventory	35	115	228	207	60	24	-	669
SJA Inventory	144%		94%		75%			

L13A HEMO TECH



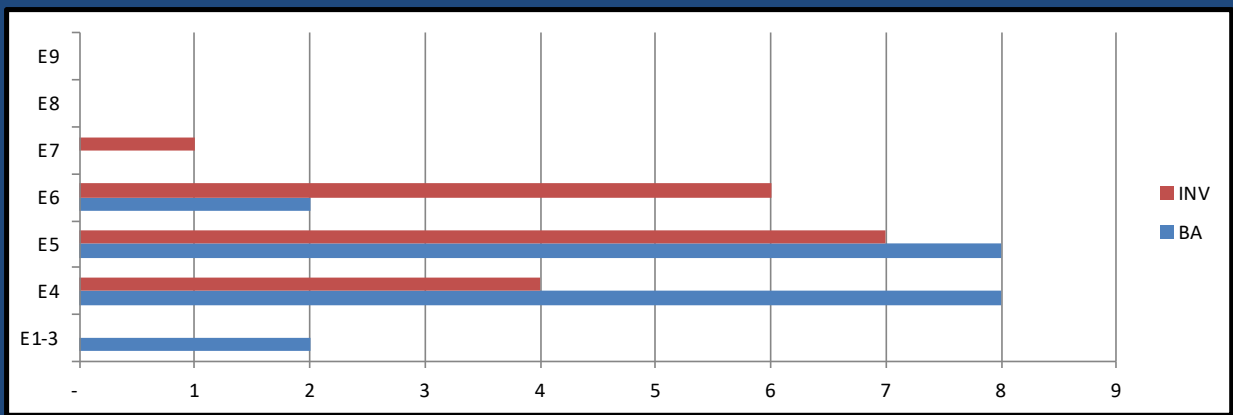
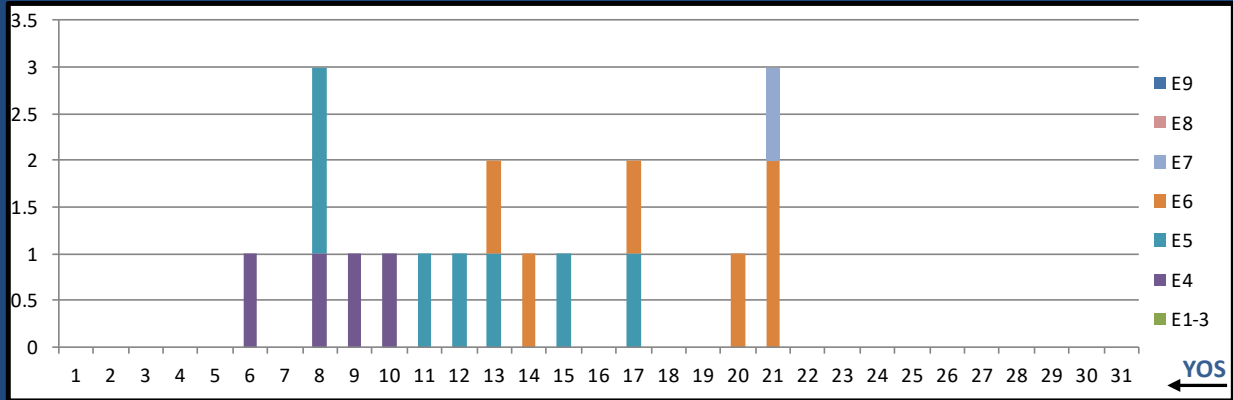
	E1-3	E4	E5	E6	E7	E8	E9	Total
% INV to BA	500%	60%	200%	0%	0%	0%	0%	115%
BA	1	10	2	-	-	-	-	13
Total Inventory	5	6	4	-	-	-	-	15
SJA Inventory	100%		200%		#DIV/0!			

L14A OPTH SURG TECH



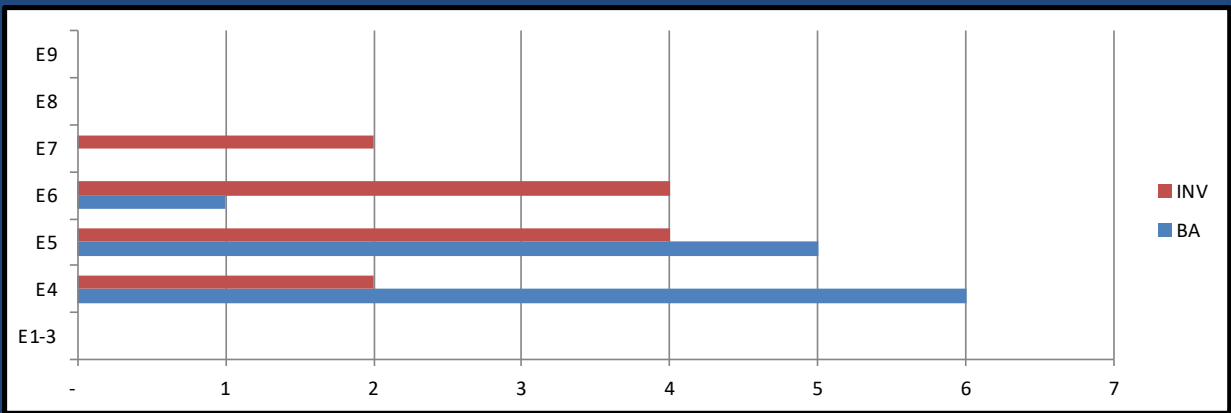
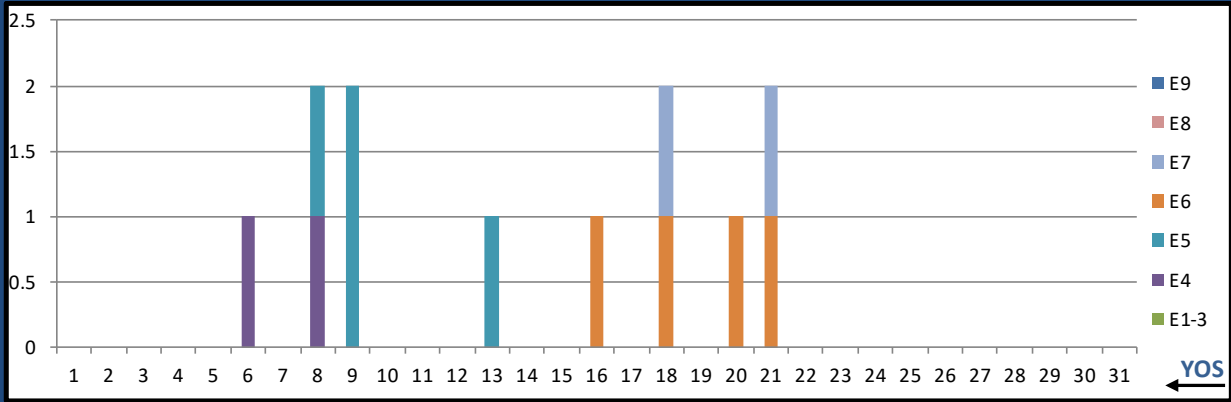
	E1-3	E4	E5	E6	E7	E8	E9	Total
% INV to BA	0%	29%	175%	0%	0%	0%	0%	118%
BA	-	7	4	-	-	-	-	11
Total Inventory	2	2	7	2	-	-	-	13
SJA Inventory	57%		225%		#DIV/0!			

L15A ULTRASOUND TECH



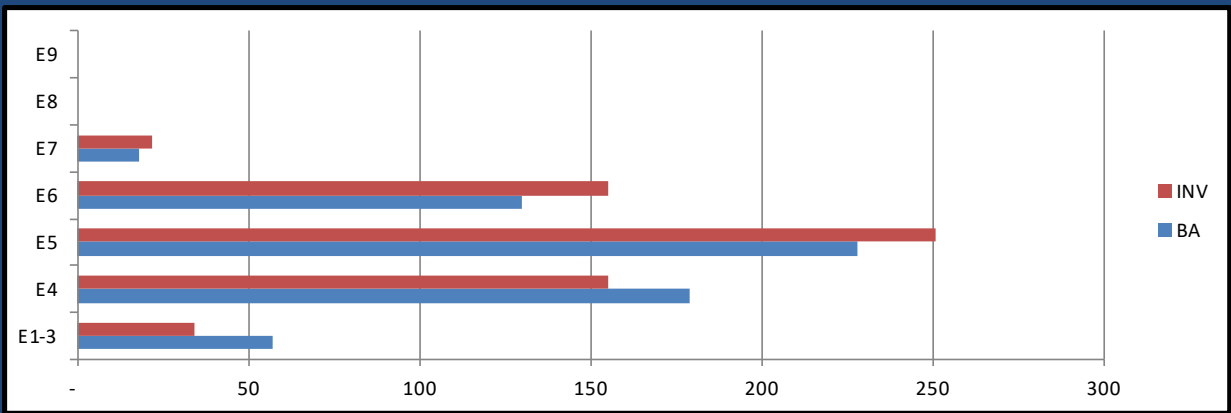
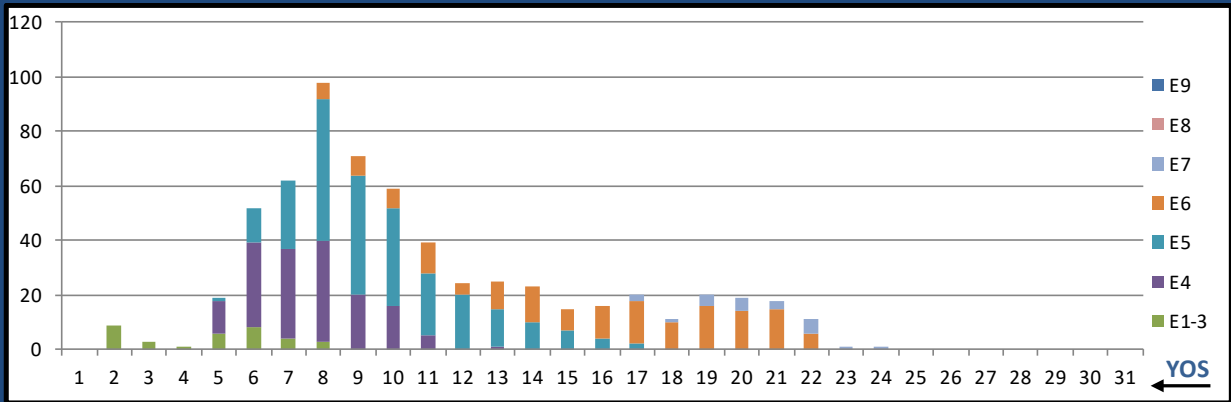
	E1-3	E4	E5	E6	E7	E8	E9	Total
% INV to BA	0%	50%	88%	300%	0%	0%	0%	90%
BA	2	8	8	2	-	-	-	20
Total Inventory	-	4	7	6	1	-	-	18
SJA Inventory	40%		130%			#DIV/0!		

L16A MAMMO TECH



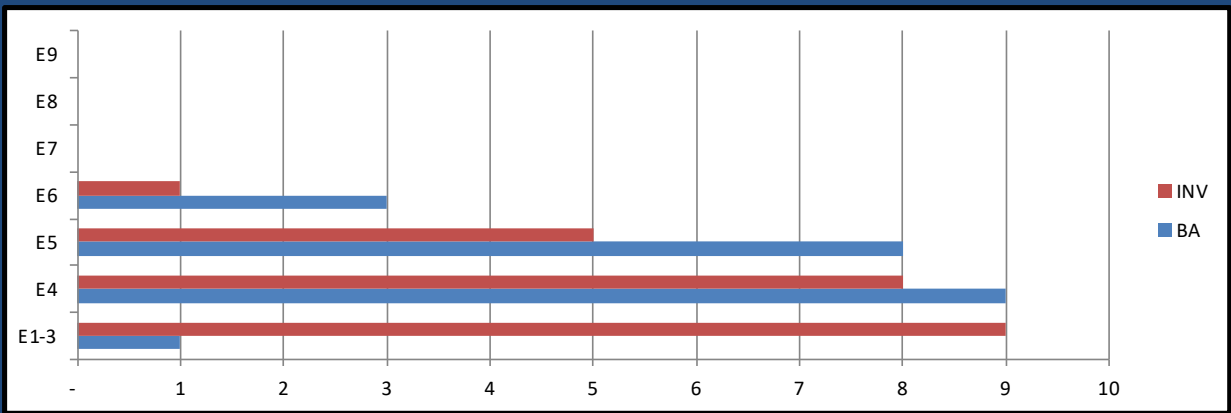
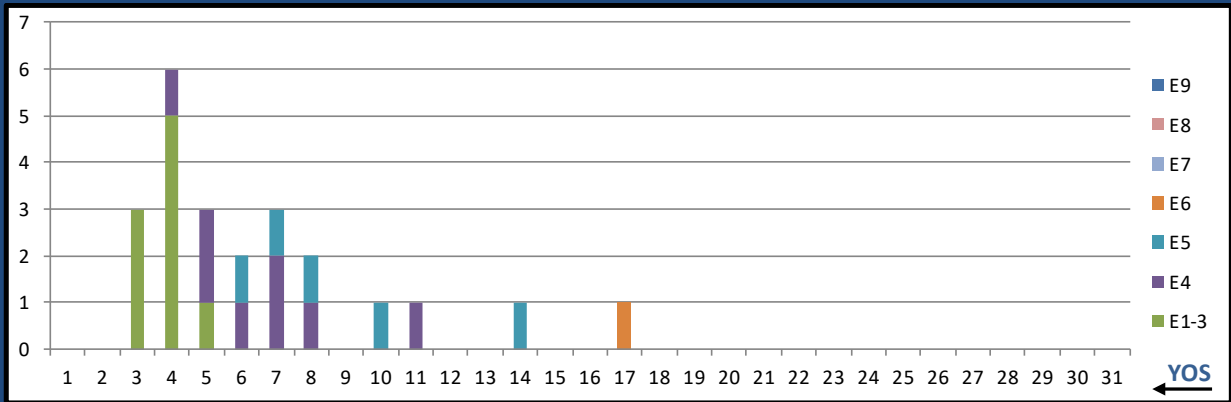
	E1-3	E4	E5	E6	E7	E8	E9	Total
% INV to BA	0%	33%	80%	400%	0%	0%	0%	100%
BA	-	6	5	1	-	-	-	12
Total Inventory	-	2	4	4	2	-	-	12
SJA Inventory	33%	133%		#DIV/0!				

L17A ADV X-RAY TECH



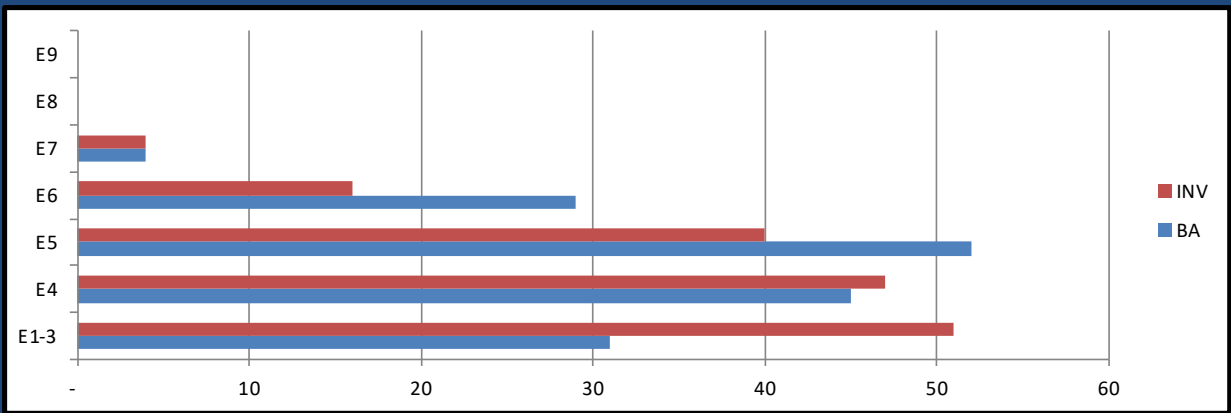
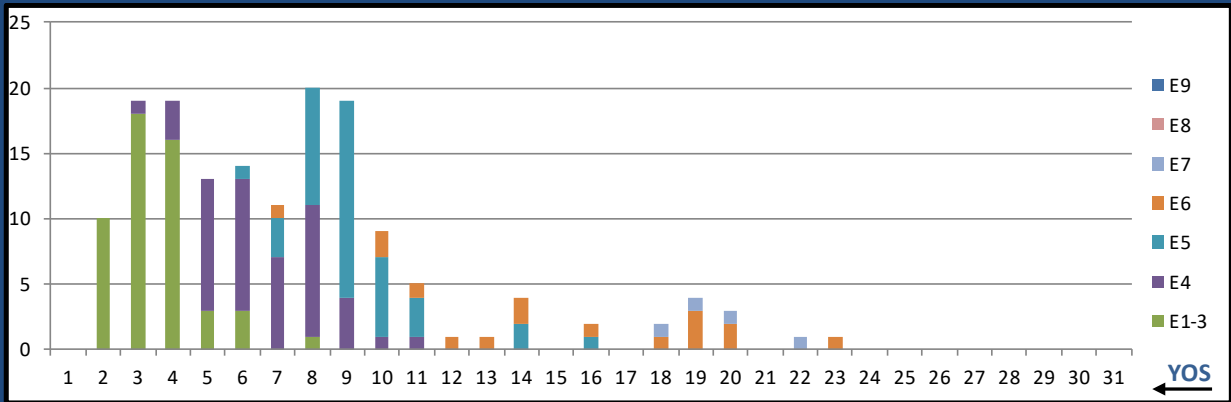
	E1-3	E4	E5	E6	E7	E8	E9	Total
% INV to BA	60%	87%	110%	119%	122%	0%	0%	101%
BA	57	179	228	130	18	-	-	612
Total Inventory	34	155	251	155	22	-	-	617
SJA Inventory	80%		113%		122%			

L18A END TECH



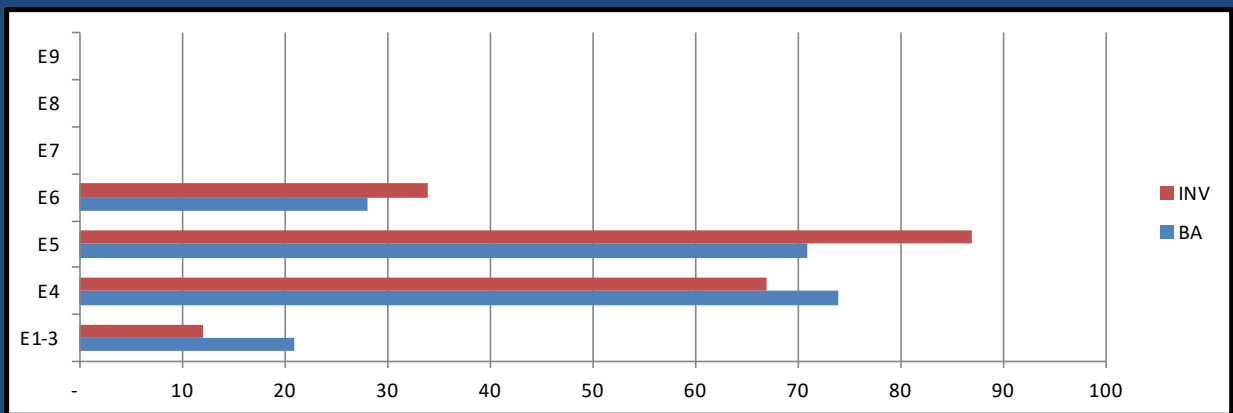
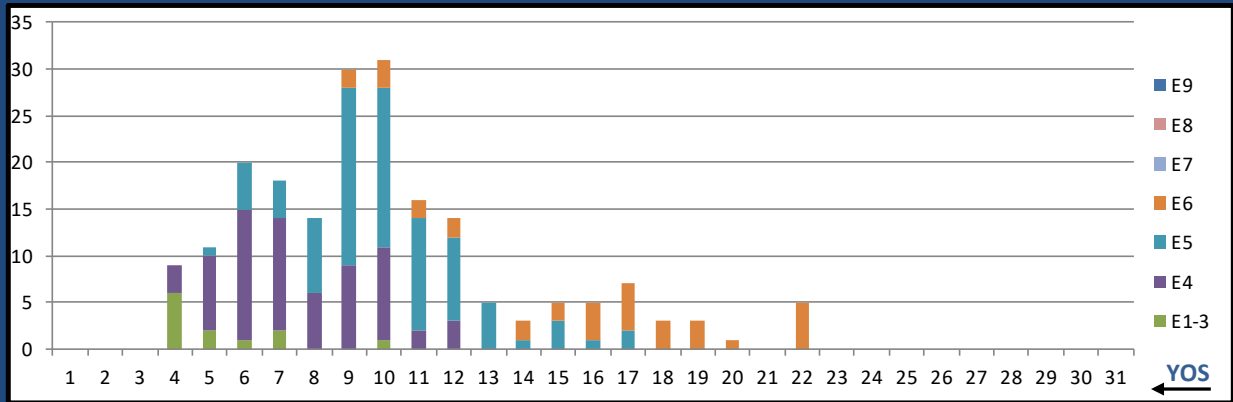
	E1-3	E4	E5	E6	E7	E8	E9	Total
% INV to BA	900%	89%	63%	33%	0%	0%	0%	110%
BA	1	9	8	3	-	-	-	21
Total Inventory	9	8	5	1	-	-	-	23
SJA Inventory	170%		55%			#DIV/0!		

L19A OPTICIAN



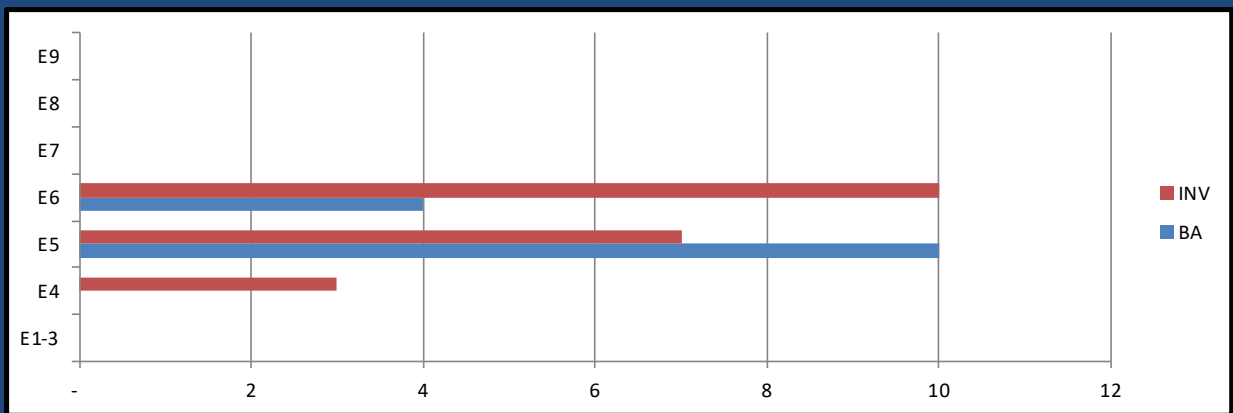
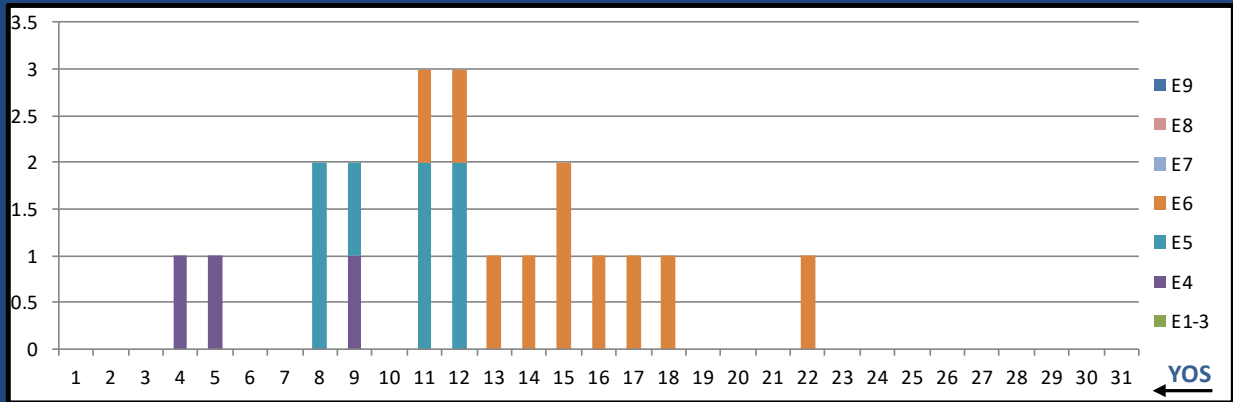
	E1-3	E4	E5	E6	E7	E8	E9	Total
% INV to BA	165%	104%	77%	55%	100%	0%	0%	98%
BA	31	45	52	29	4	-	-	161
Total Inventory	51	47	40	16	4	-	-	158
SJA Inventory	129%		69%		100%			

L20A PT TECH



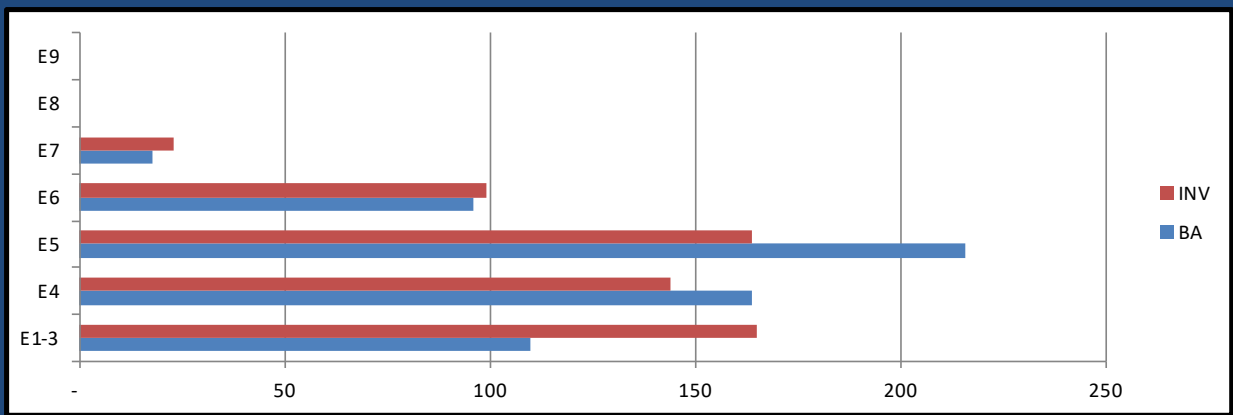
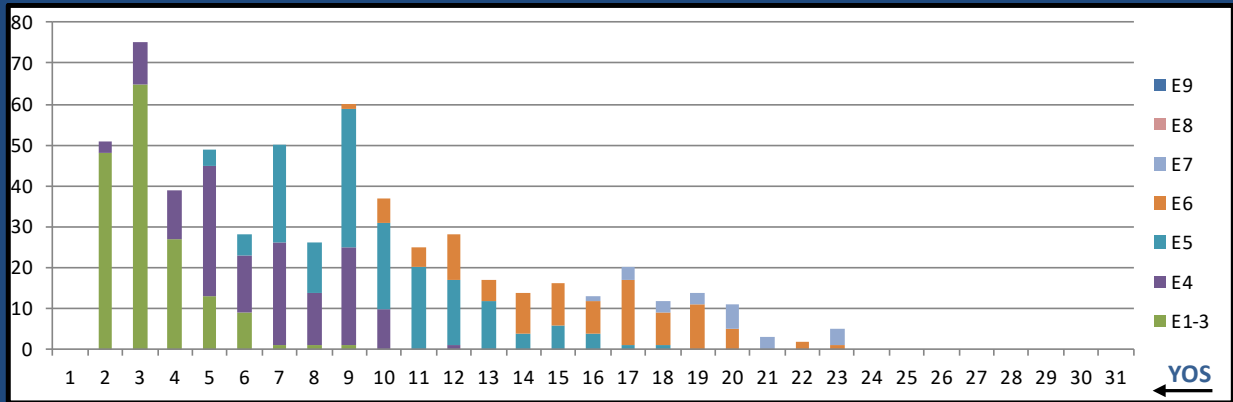
	E1-3	E4	E5	E6	E7	E8	E9	Total
% INV to BA	57%	91%	123%	121%	0%	0%	0%	103%
BA	21	74	71	28	-	-	-	194
Total Inventory	12	67	87	34	-	-	-	200
SJA Inventory	83%		122%		#DIV/0!			

L21A OT TECH



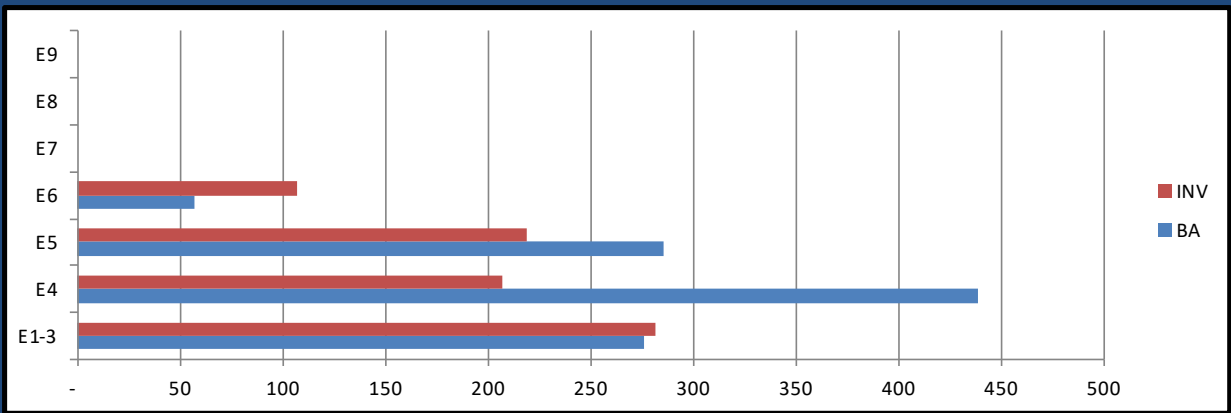
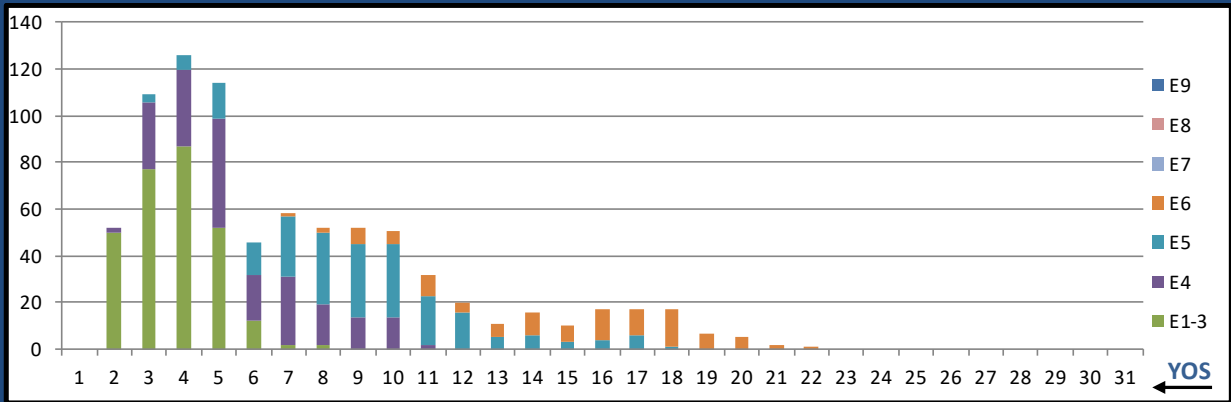
	E1-3	E4	E5	E6	E7	E8	E9	Total
% INV to BA	0%	0%	70%	250%	0%	0%	0%	143%
BA	-	-	10	4	-	-	-	14
Total Inventory	-	3	7	10	-	-	-	20
SJA Inventory	#DIV/0!		121%			#DIV/0!		

L22A PHARM TECH



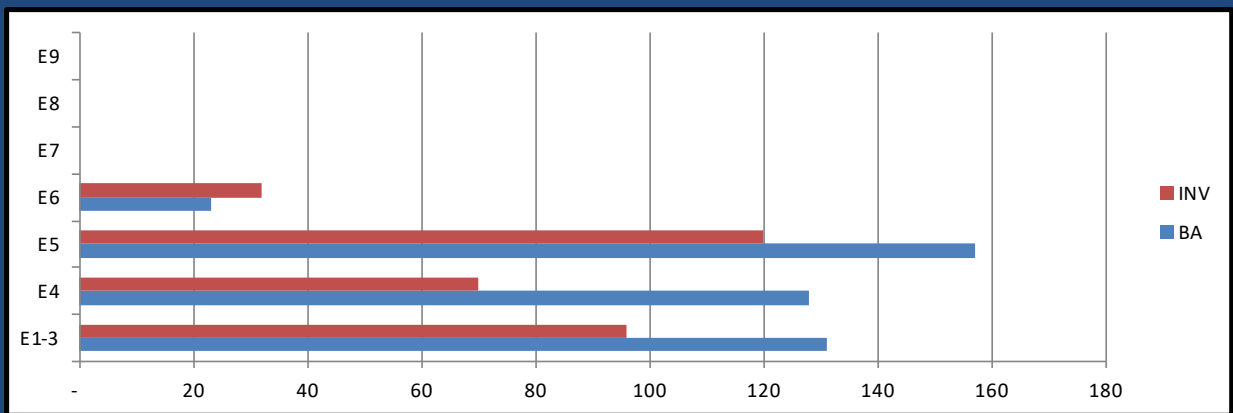
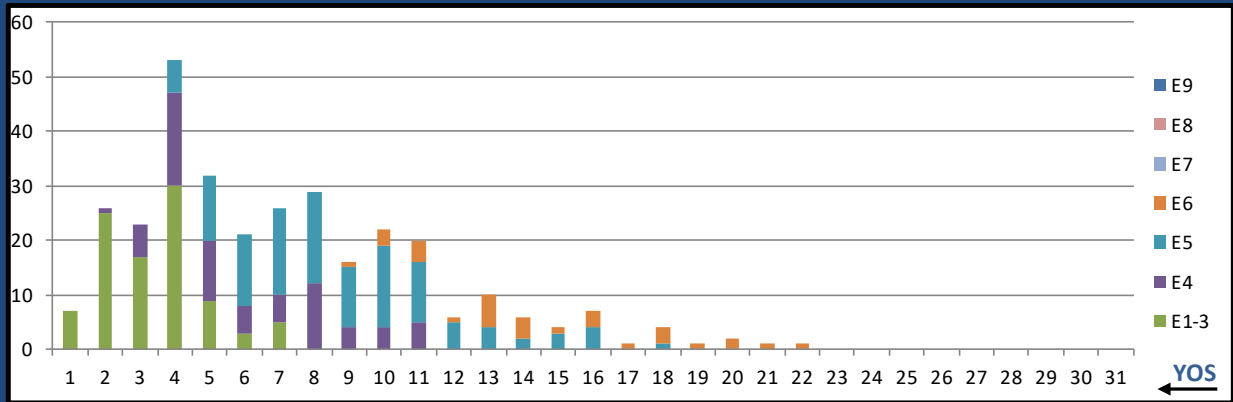
	E1-3	E4	E5	E6	E7	E8	E9	Total
% INV to BA	150%	88%	76%	103%	128%	0%	0%	99%
BA	110	164	216	96	18	-	-	604
Total Inventory	165	144	164	99	23	-	-	595
SJA Inventory	113%		84%		128%			

L23A SURG TECH



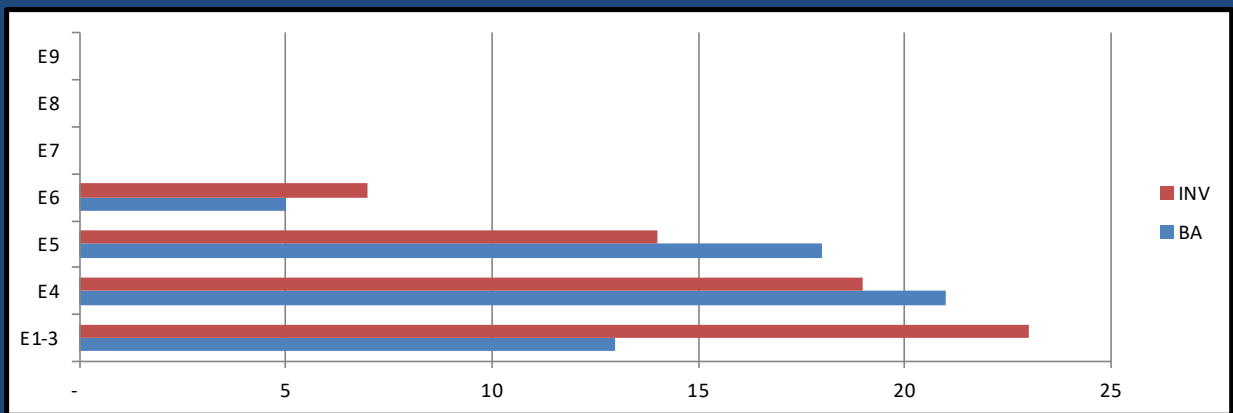
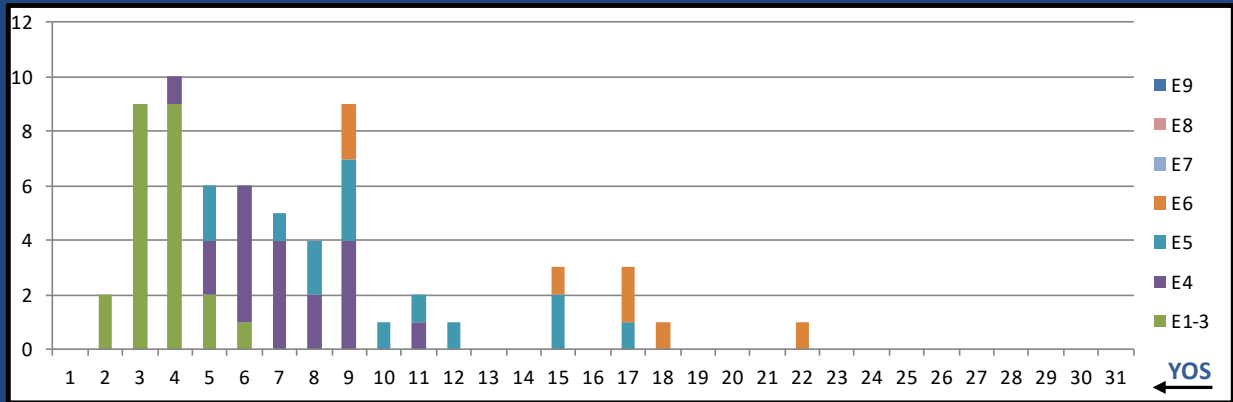
	E1-3	E4	E5	E6	E7	E8	E9	Total
% INV to BA	102%	47%	77%	188%	0%	0%	0%	77%
BA	276	439	286	57	-	-	-	1,058
Total Inventory	282	207	219	107	-	-	-	815
SJA Inventory	68%		95%		#DIV/0!			

L24A BEHAV HLTH



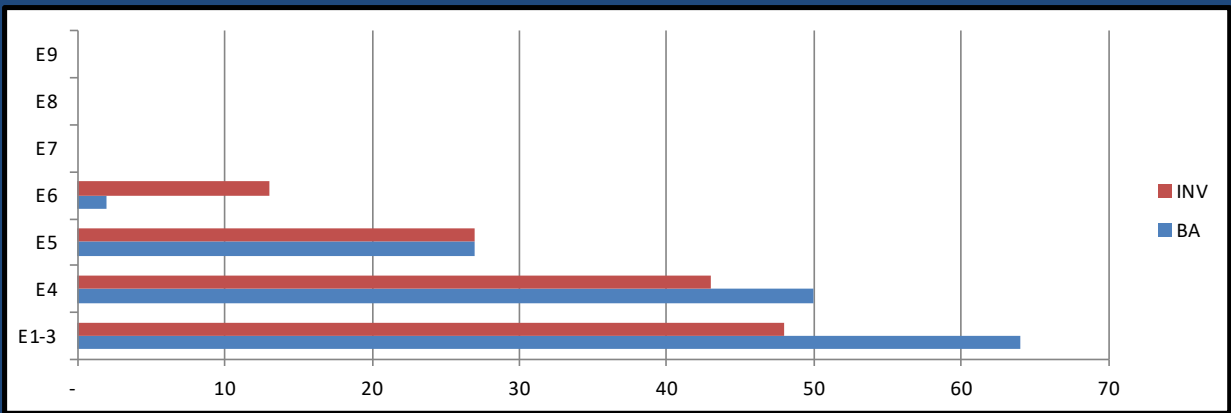
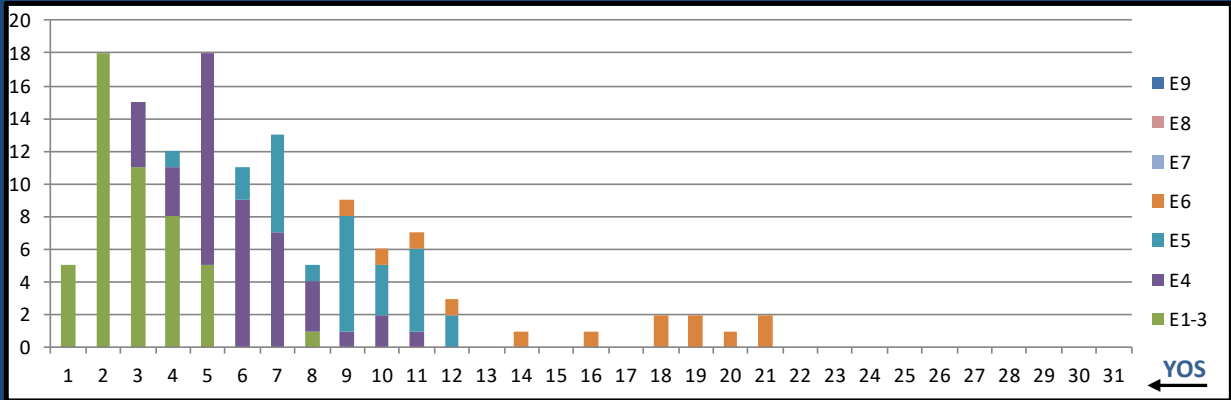
	E1-3	E4	E5	E6	E7	E8	E9	Total
% INV to BA	73%	55%	76%	139%	0%	0%	0%	72%
BA	131	128	157	23	-	-	-	439
Total Inventory	96	70	120	32	-	-	-	318
SJA Inventory	64%		84%		#DIV/0!			

L25A UROLOGY TECH



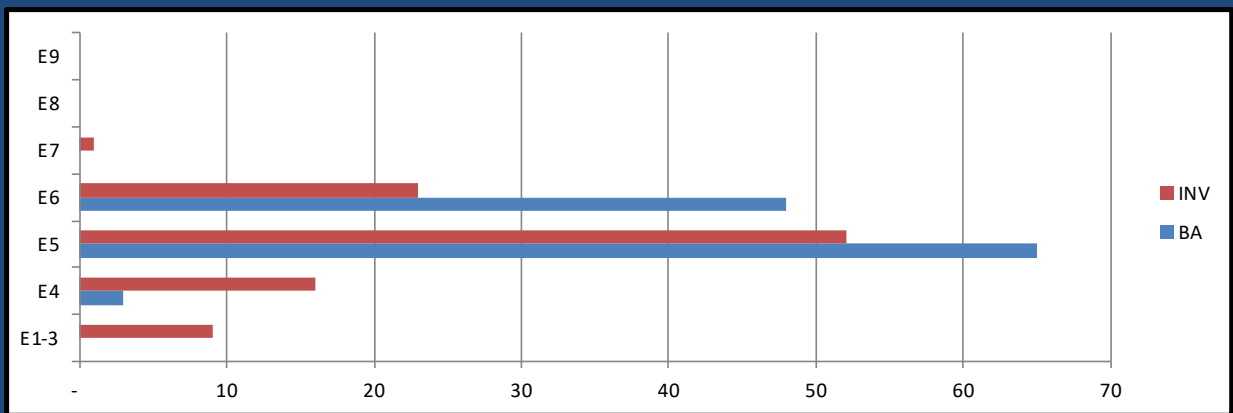
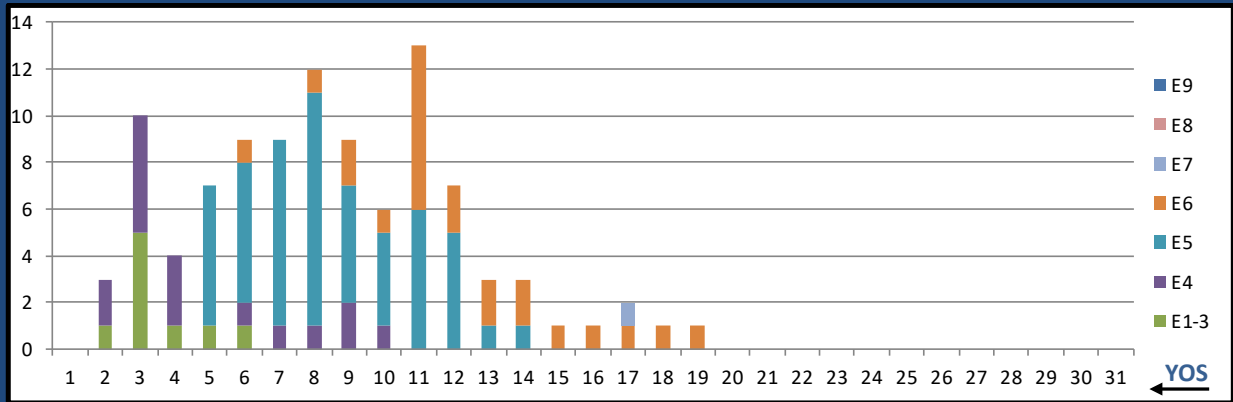
	E1-3	E4	E5	E6	E7	E8	E9	Total
% INV to BA	177%	90%	78%	140%	0%	0%	0%	111%
BA	13	21	18	5	-	-	-	57
Total Inventory	23	19	14	7	-	-	-	63
SJA Inventory	124%		91%		#DIV/0!			

L26A ORTHOPEDIC TECH



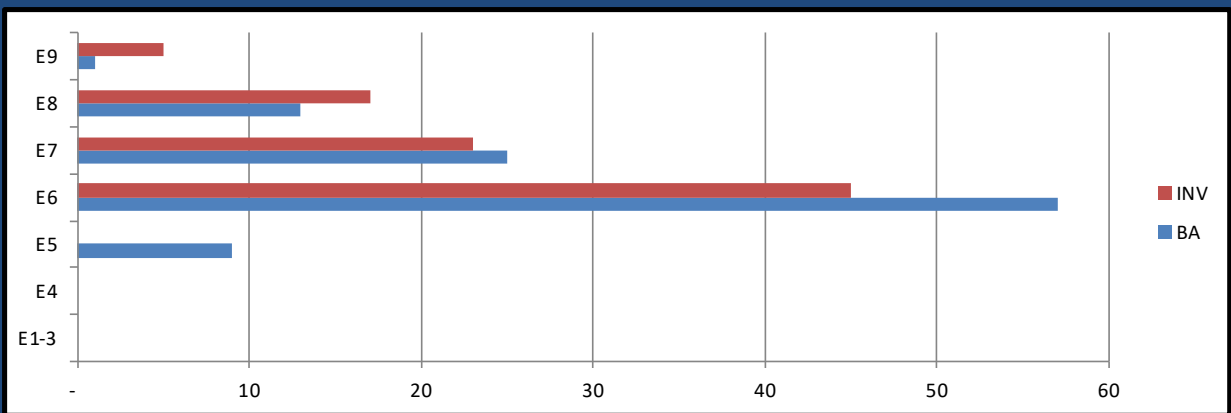
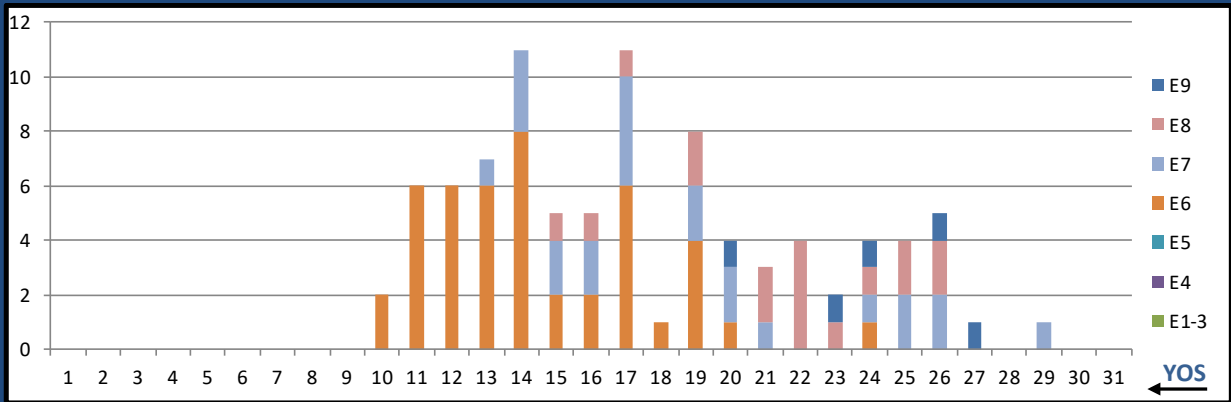
	E1-3	E4	E5	E6	E7	E8	E9	Total
% INV to BA	75%	86%	100%	650%	0%	0%	0%	92%
BA	64	50	27	2	-	-	-	143
Total Inventory	48	43	27	13	-	-	-	131
SJA Inventory	80%		138%			#DIV/0!		

L27A DIVE MED TECH



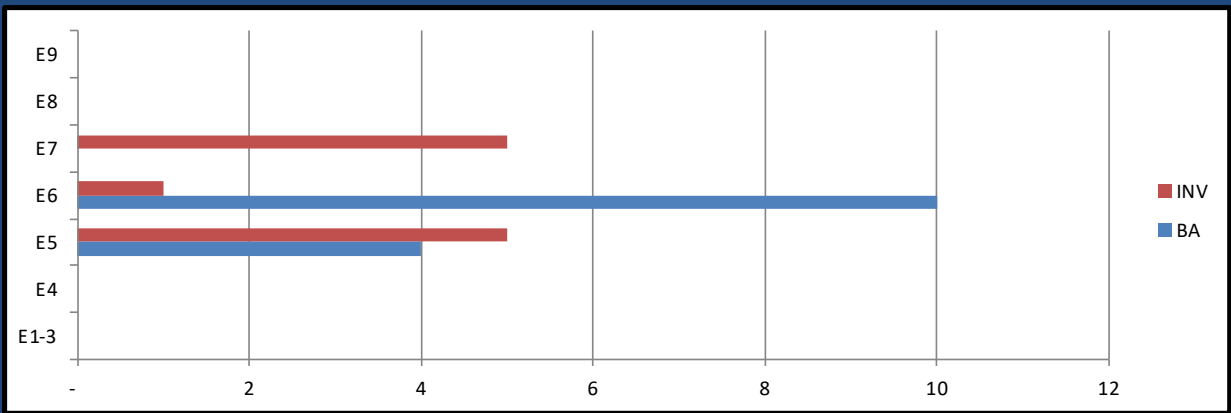
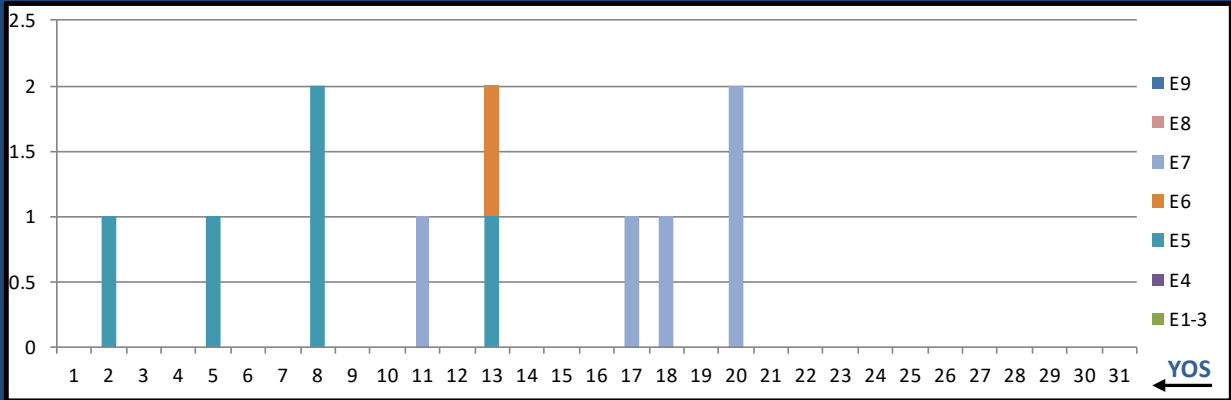
	E1-3	E4	E5	E6	E7	E8	E9	Total
% INV to BA	0%	533%	80%	48%	0%	0%	0%	87%
BA	-	3	65	48	-	-	-	116
Total Inventory	9	16	52	23	1	-	-	101
SJA Inventory	833%		66%		#DIV/0!			

L28A DIVE IDC



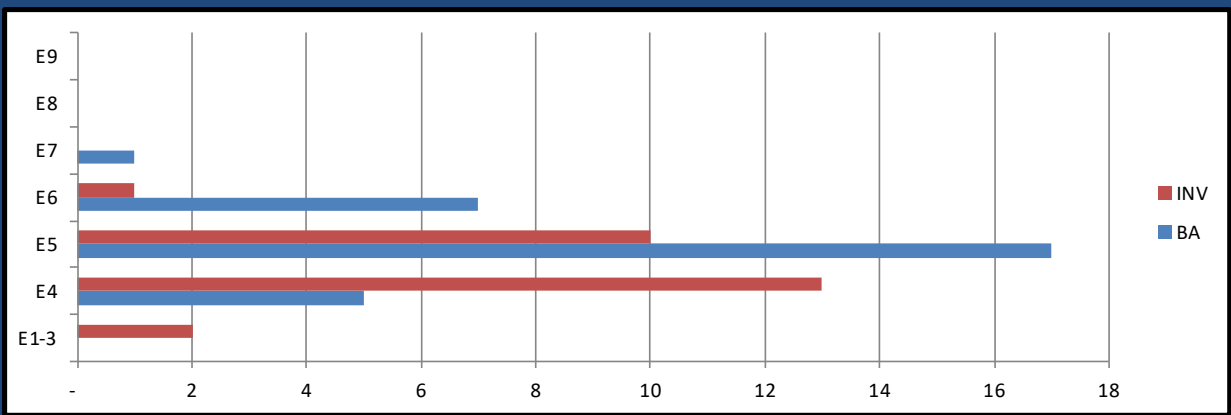
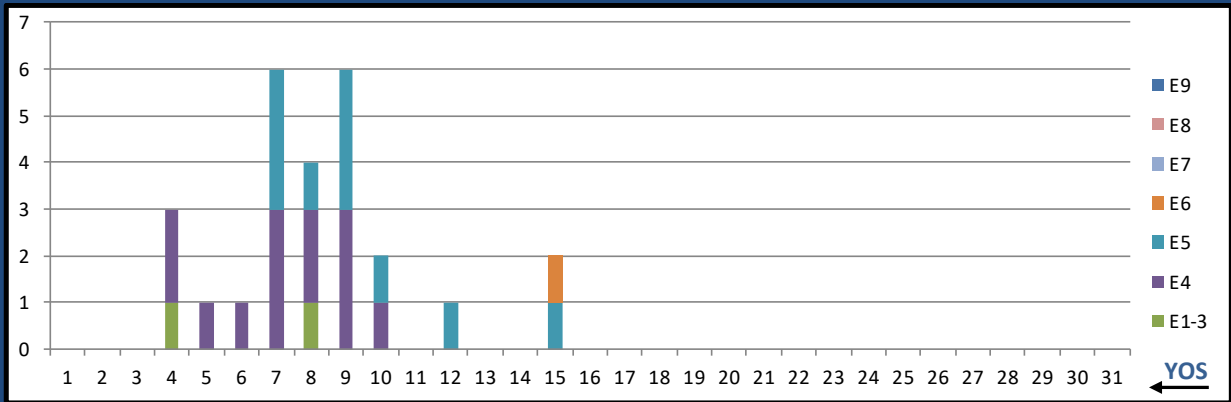
	E1-3	E4	E5	E6	E7	E8	E9	Total
% INV to BA	0%	0%	0%	79%	92%	131%	500%	86%
BA	-	-	9	57	25	13	1	105
Total Inventory	-	-	-	45	23	17	5	90
SJA Inventory	#DIV/0!		68%		115%			

L29A MORTICIAN



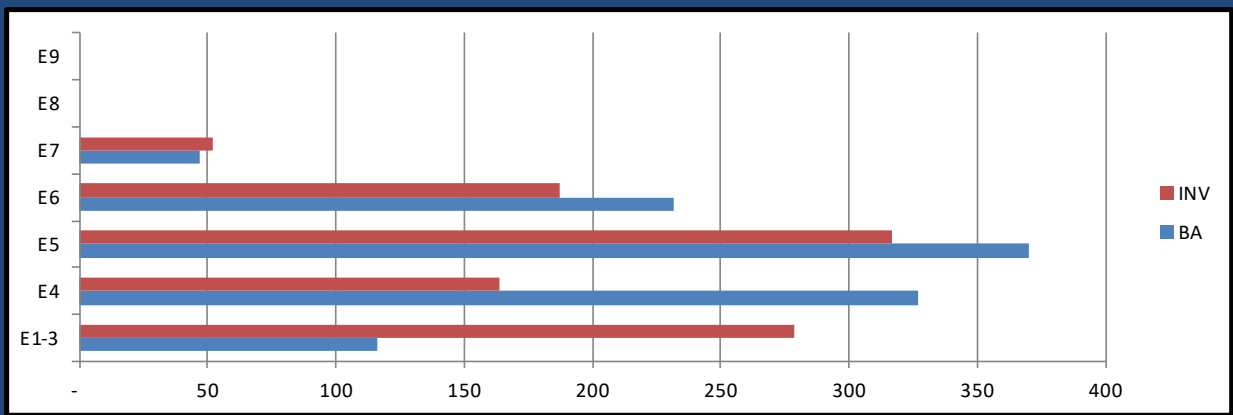
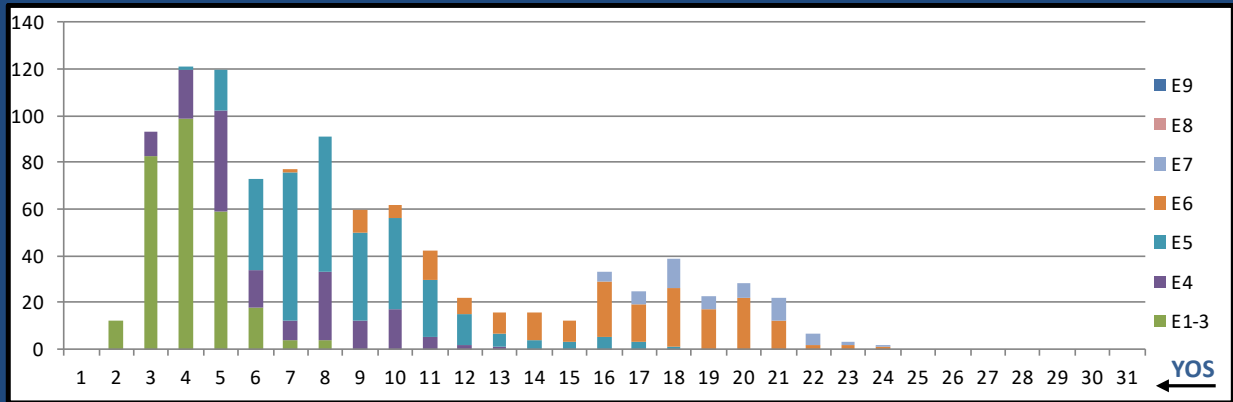
	E1-3	E4	E5	E6	E7	E8	E9	Total
% INV to BA	0%	0%	125%	10%	0%	0%	0%	79%
BA	-	-	4	10	-	-	-	14
Total Inventory	-	-	5	1	5	-	-	11
SJA Inventory	#DIV/0!		43%		#DIV/0!			

L30A HISTO TECH



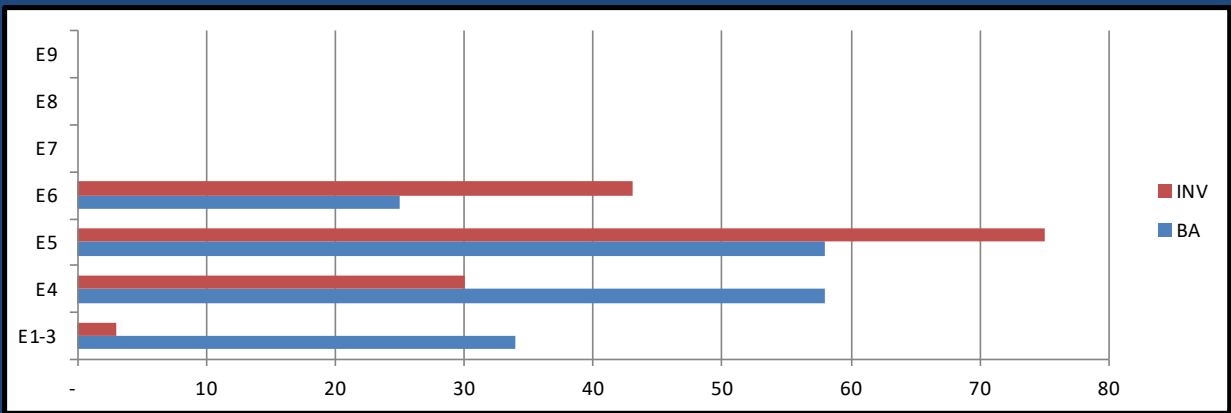
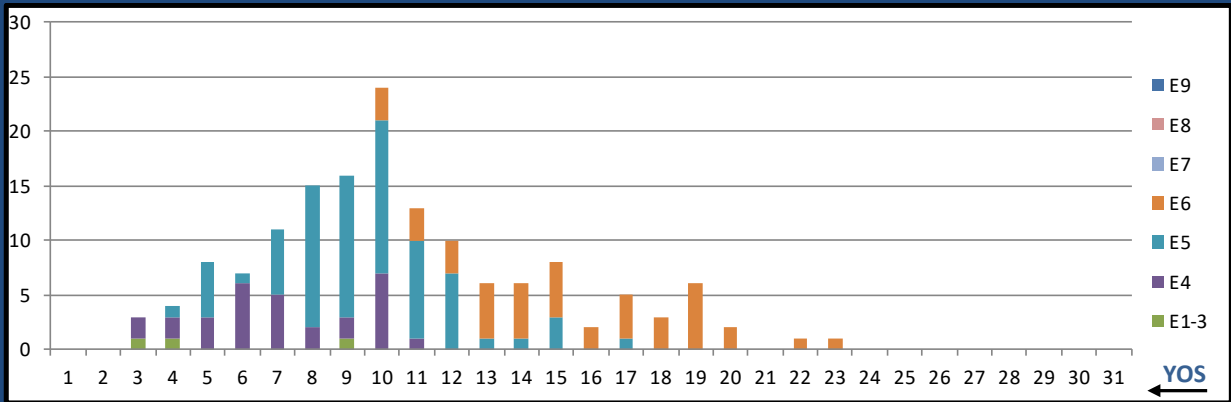
	E1-3	E4	E5	E6	E7	E8	E9	Total
% INV to BA	0%	260%	59%	14%	0%	0%	0%	87%
BA	-	5	17	7	1	-	-	30
Total Inventory	2	13	10	1	-	-	-	26
SJA Inventory	300%		46%			0%		

L31A MED LAB TECH



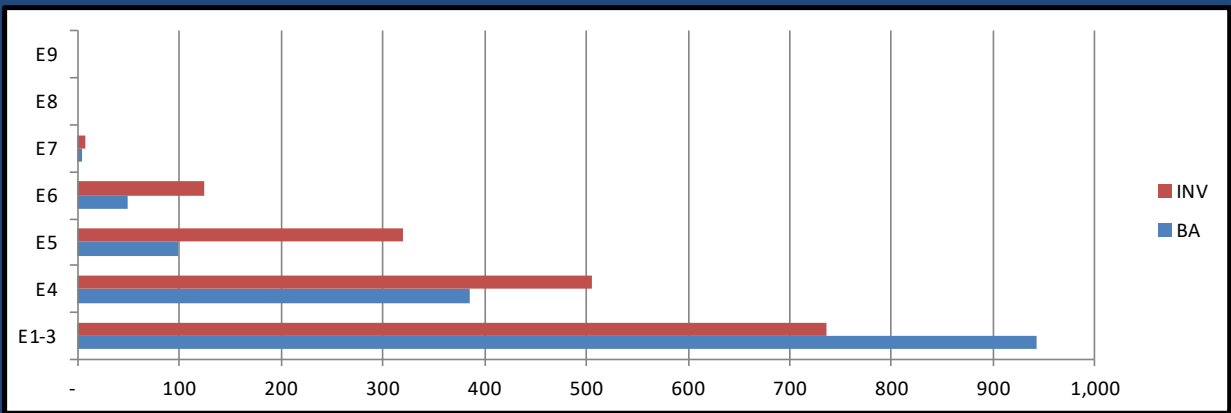
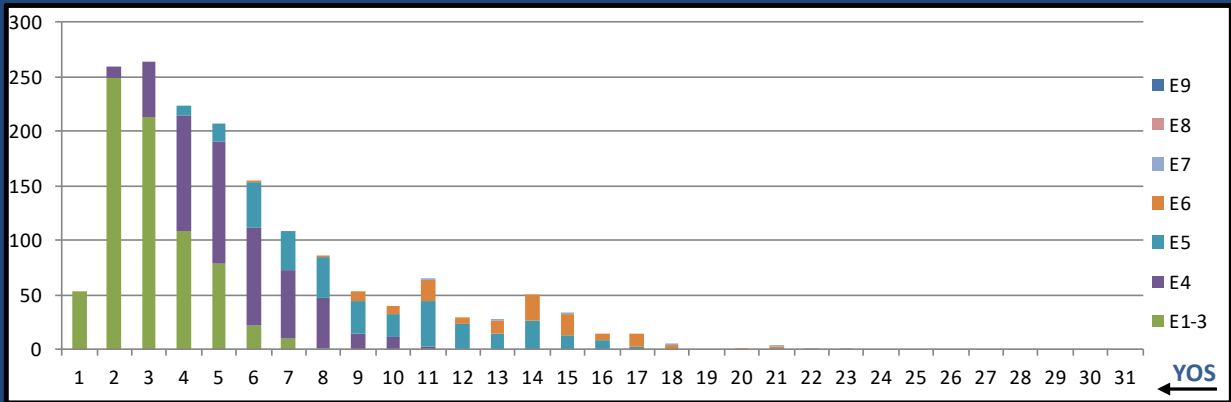
	E1-3	E4	E5	E6	E7	E8	E9	Total
% INV to BA	241%	50%	86%	81%	111%	0%	0%	91%
BA	116	327	370	232	47	-	-	1,092
Total Inventory	279	164	317	187	52	-	-	999
SJA Inventory	100%		84%		111%			

L32A RESP THER TECH



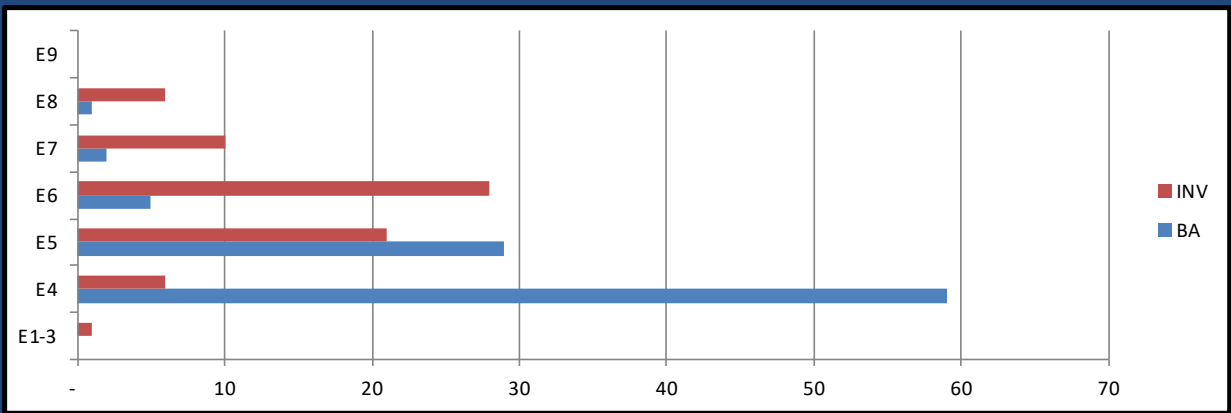
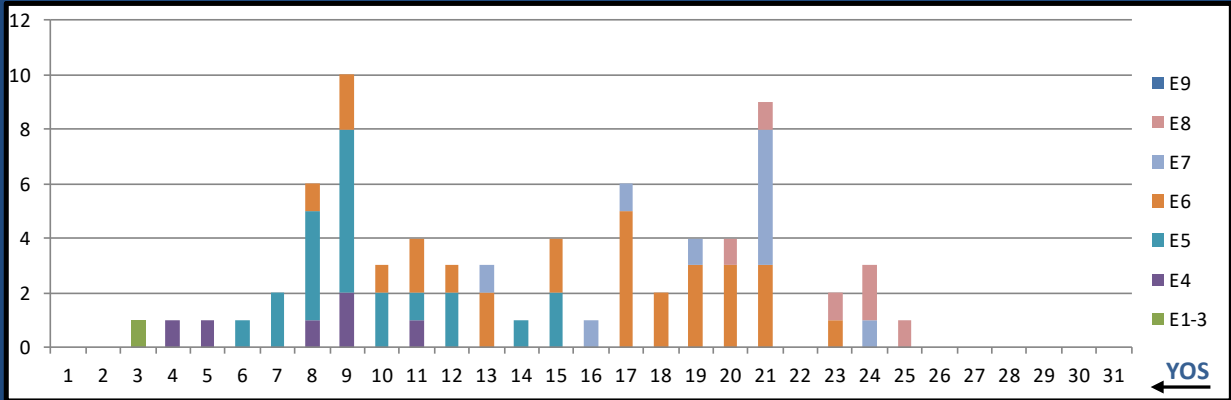
	E1-3	E4	E5	E6	E7	E8	E9	Total
% INV to BA	9%	52%	129%	172%	0%	0%	0%	86%
BA	34	58	58	25	-	-	-	175
Total Inventory	3	30	75	43	-	-	-	151
SJA Inventory	36%		142%		#DIV/0!			

L33A DENTAL ASSISTANT



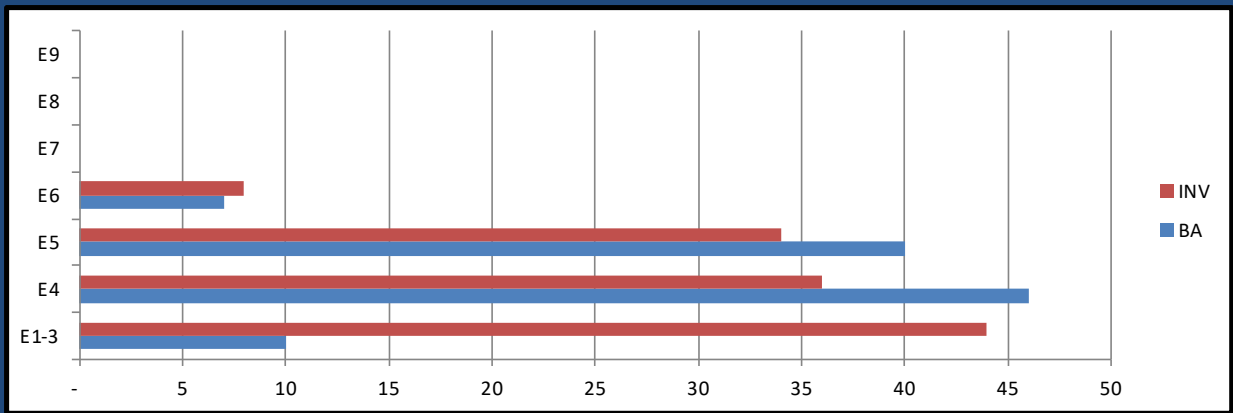
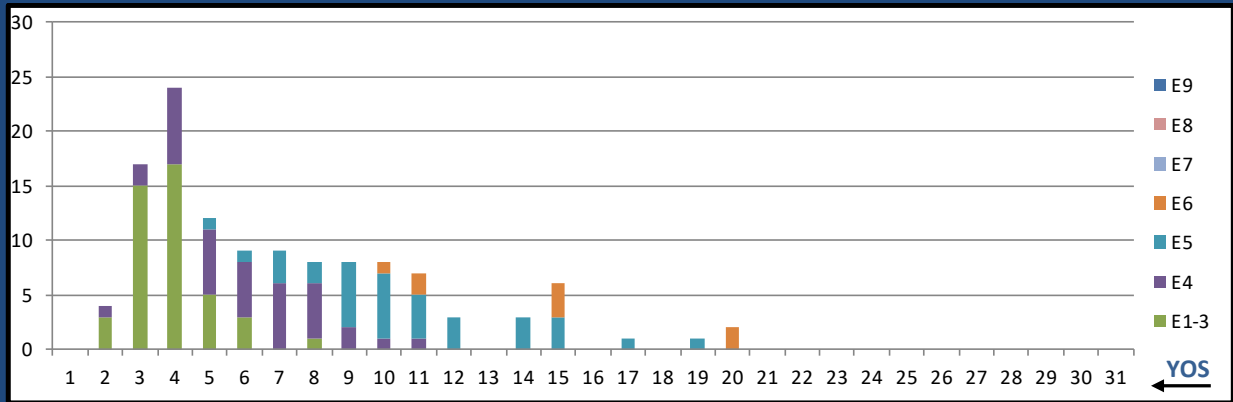
	E1-3	E4	E5	E6	E7	E8	E9	Total
% INV to BA	78%	131%	323%	255%	200%	0%	0%	114%
BA	942	386	99	49	4	-	-	1,480
Total Inventory	736	505	320	125	8	-	-	1,694
SJA Inventory	93%		301%		200%			

L35A DENTAL HYGIENIST



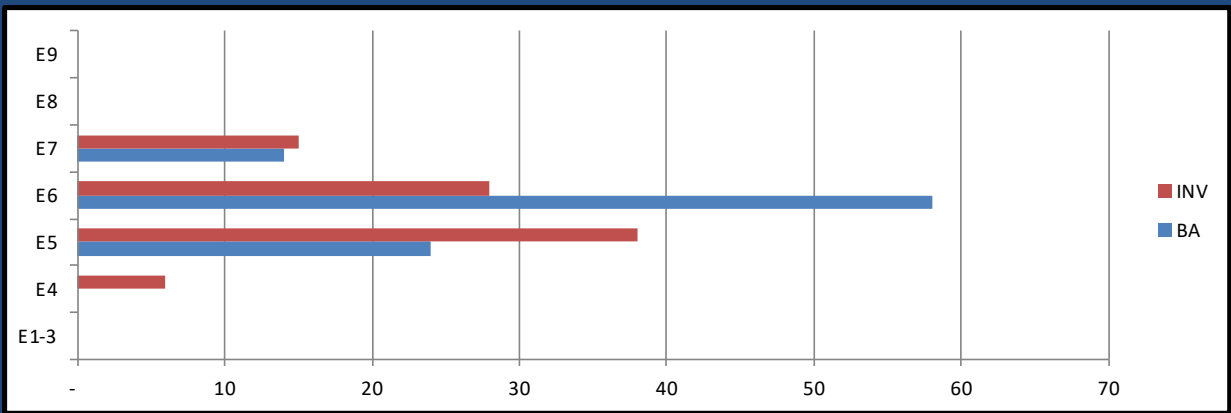
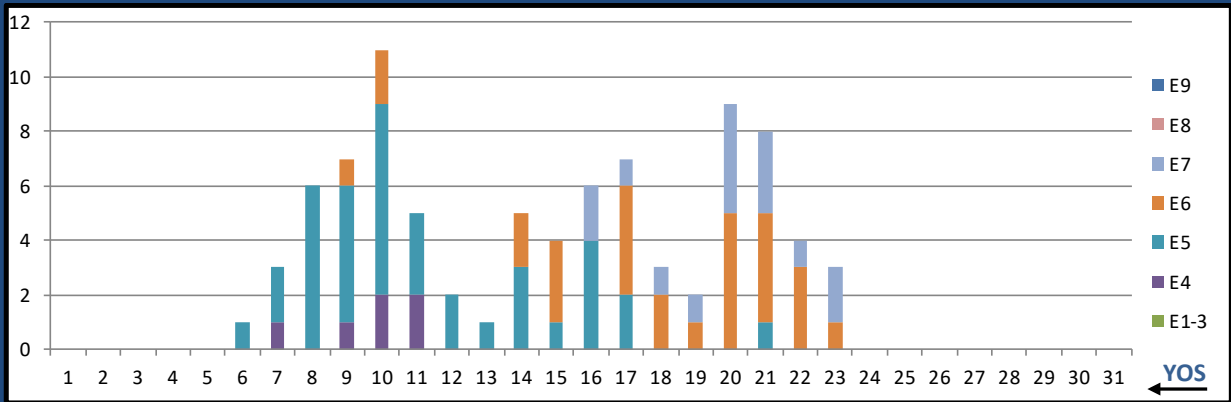
	E1-3	E4	E5	E6	E7	E8	E9	Total
% INV to BA	0%	10%	72%	560%	500%	600%	0%	75%
BA	-	59	29	5	2	1	-	96
Total Inventory	1	6	21	28	10	6	-	72
SJA Inventory	12%		144%		533%			

L36A DENTAL LAB BASIC



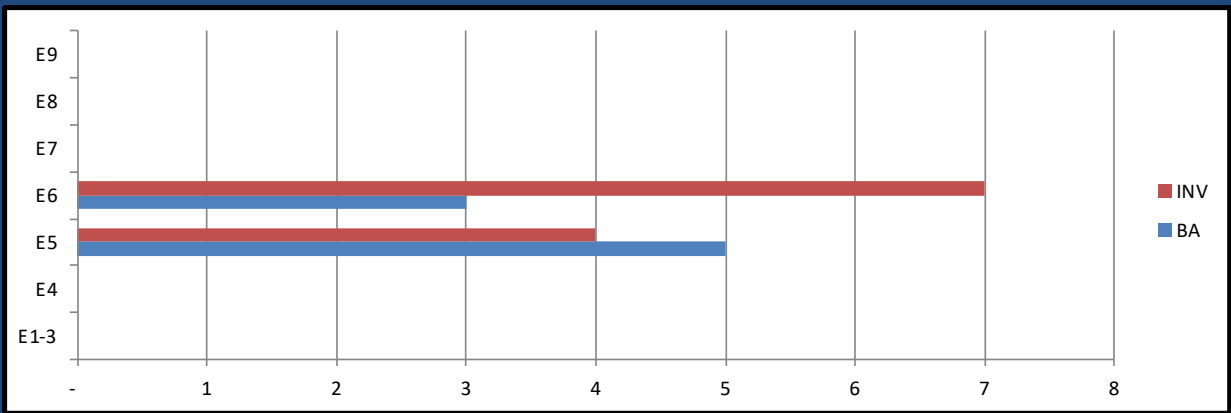
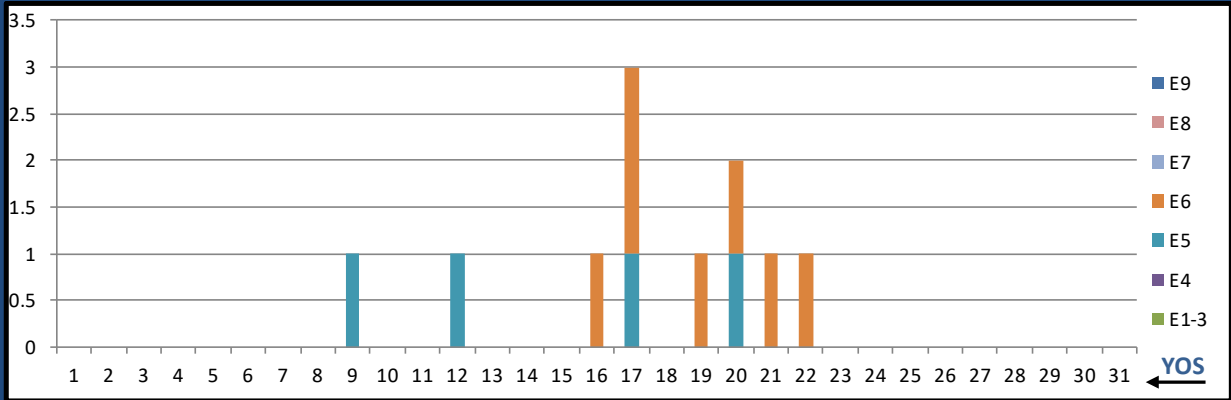
	E1-3	E4	E5	E6	E7	E8	E9	Total
% INV to BA	440%	78%	85%	114%	0%	0%	0%	118%
BA	10	46	40	7	-	-	-	103
Total Inventory	44	36	34	8	-	-	-	122
SJA Inventory	143%		89%		#DIV/0!			

L37A DENTAL LAB ADV



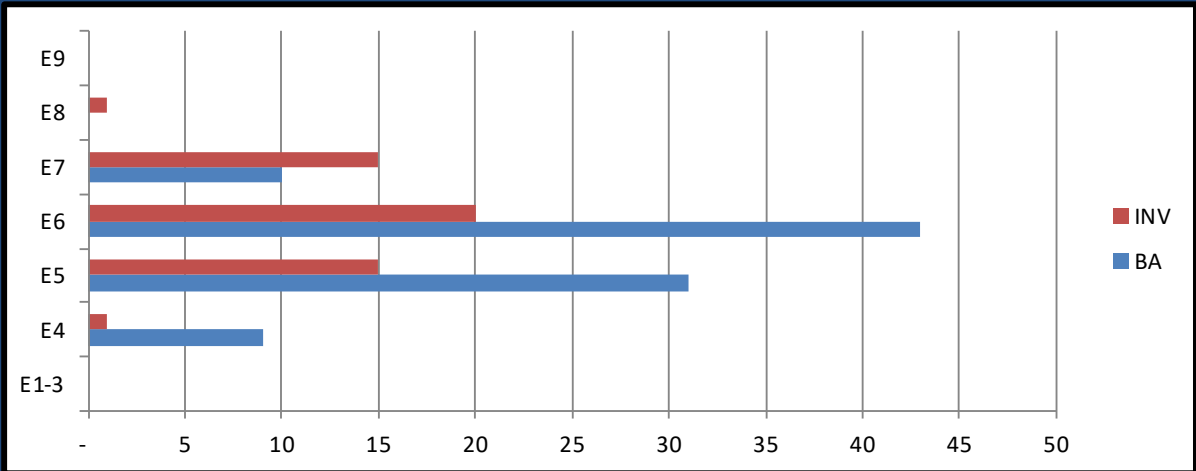
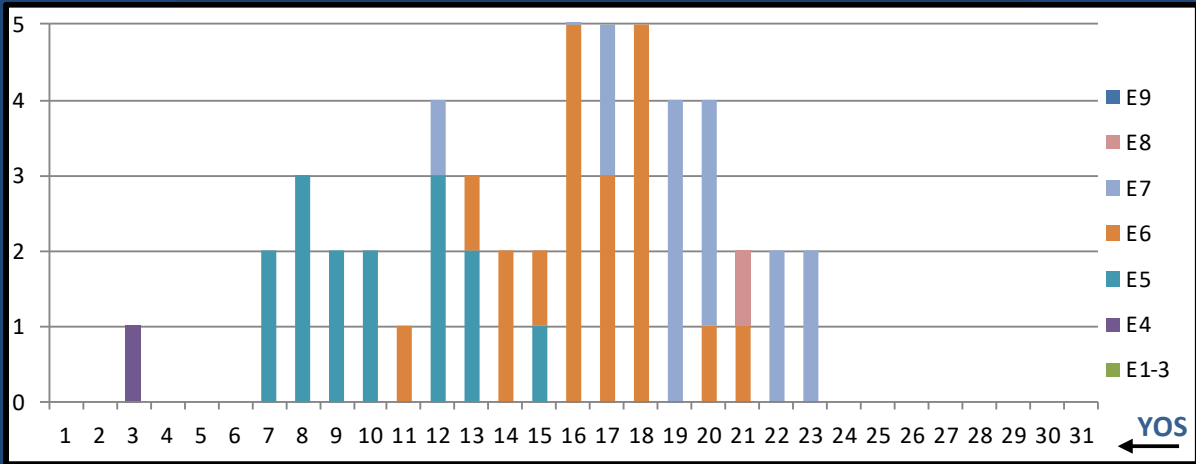
	E1-3	E4	E5	E6	E7	E8	E9	Total
% INV to BA	0%	0%	158%	48%	107%	0%	0%	91%
BA	-	-	24	58	14	-	-	96
Total Inventory	-	6	38	28	15	-	-	87
SJA Inventory	#DIV/0!		80%		107%			

L38A DENTAL ORALMAX



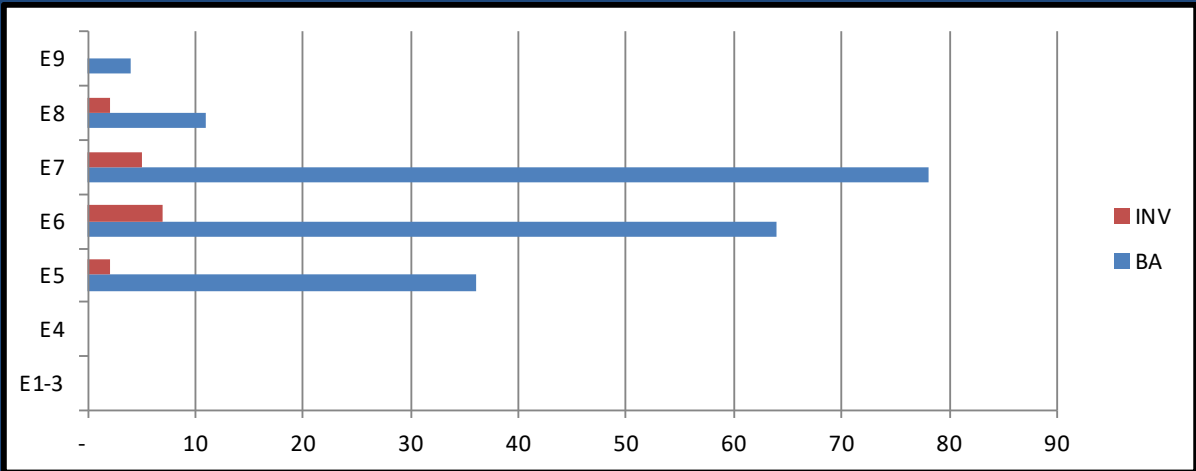
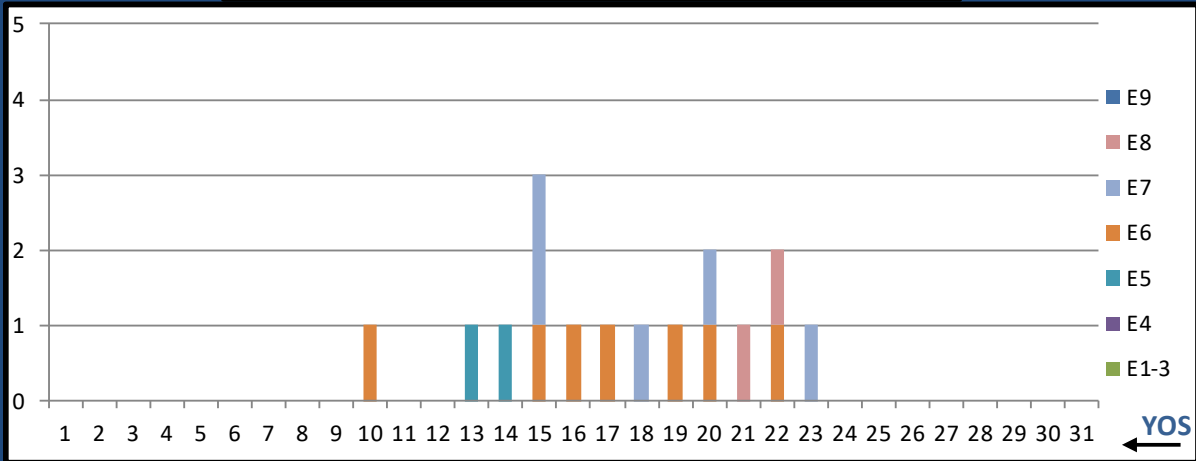
	E1-3	E4	E5	E6	E7	E8	E9	Total
% INV to BA	0%	0%	80%	233%	0%	0%	0%	138%
BA	-	-	5	3	-	-	-	8
Total Inventory	-	-	4	7	-	-	-	11
SJA Inventory	#DIV/0!		138%			#DIV/0!		

L39A DRUG & ALCOHOL COUNSELOR INTERN



	E1-3	E4	E5	E6	E7	E8	E9	Total
%INV to BA	0%	11%	48%	47%	150%	0%	0%	56%
BA	-	9	31	43	10	-	-	93
Total Inventory	-	1	15	20	15	1	-	52
SJA Inventory	11%		47%		160%			

L40A DRUG & ALCOHOL COUNSELOR



	E1-3	E4	E5	E6	E7	E8	E9	Total
%INV to BA	0%	0%	6%	11%	6%	18%	0%	8%
BA	-	-	36	64	78	11	4	193
Total Inventory	-	-	2	7	5	2	-	16
SJA Inventory	#DIV/0!		9%		8%			

OCTOBER 2020 HM MANNING SNAPSHOT

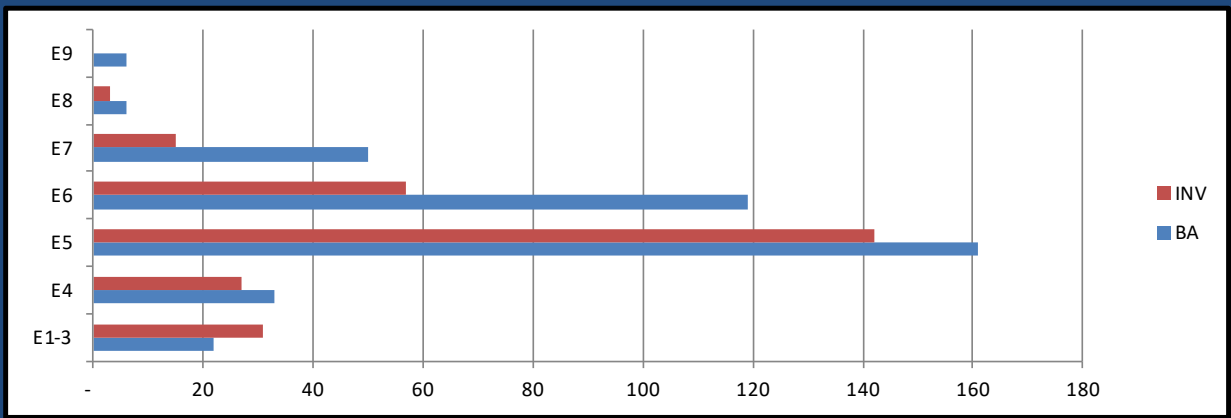
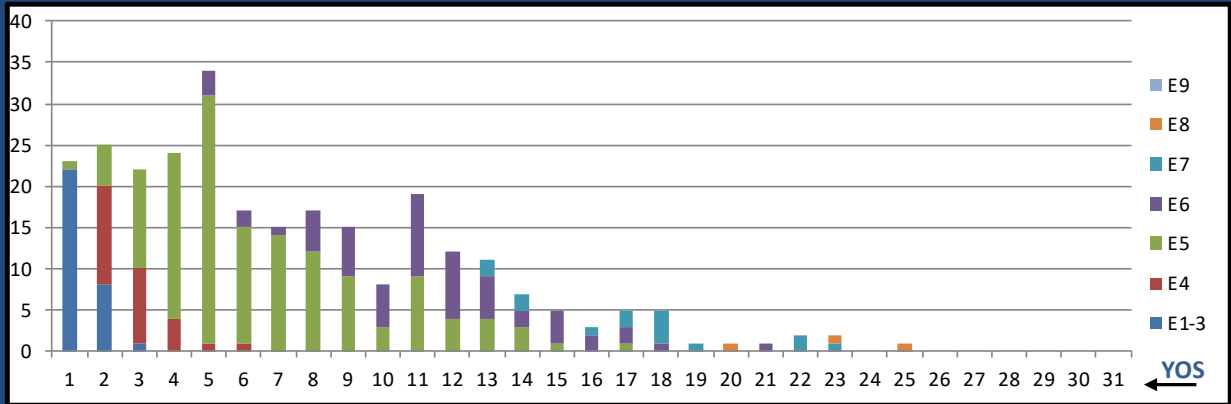
HM FTS MANNING 7 OCT 2020	NEC	BA	INV WITH PRIMARY NEC	INV/BA PRIMARY NEC	TOTAL INV W/NEC	TOTAL NEC INV/BA
FIELD MED TECH	L03A	163	223	136.8%	284	174.2%
AERO MED TECH	L04A	39	82	210.3%	83	212.8%
SURFACE IDC	L10A	30	27	90.0%	27	90.0%
PREV MED TECH	L12A	1	5	500.0%	5	500.0%
SURG TECH	L23A	1	2	200.0%	2	200.0%
MED LAB TECH	L31A	0	1	#DIV/0!	1	#DIV/0!
DRUG & ALCOHOL COUNS. INTERN	L39A	1	1	100.0%	1	100.0%

General Duty HM	0000/L03A	561	515	91.8%
NECS (less L03A)	NEC	71	117	164.8%
NOS L500 TOTAL	ALL	632	632	100.0%

Critically Undermanned <85% Undermanned 85%-94% Healthy 95%-104% Overmanned >105%

OCTOBER 2020 HM MANNING SNAPSHOT

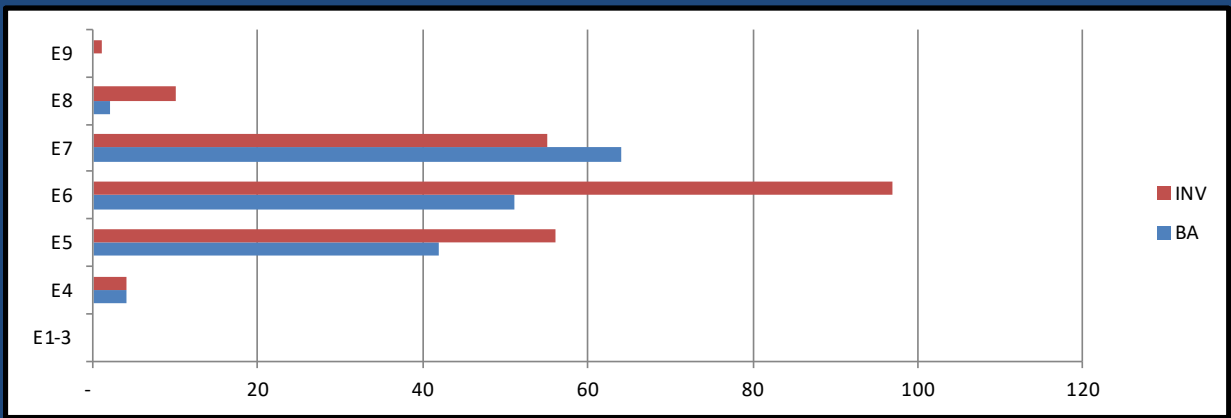
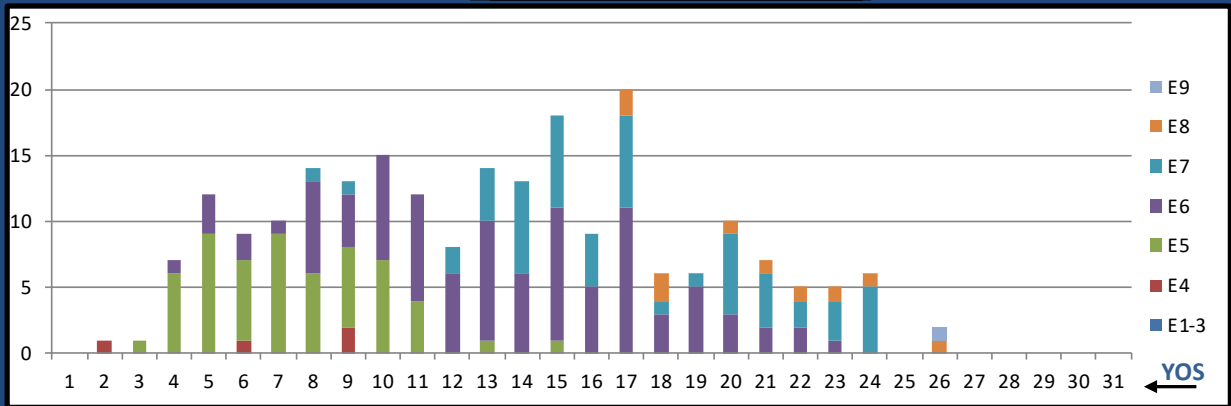
FTS 0000



	E1-3	E4	E5	E6	E7	E8	E9	Total
%INV to BA	141%	82%	88%	48%	30%	50%	0%	69%
BA	22	33	161	119	50	6	6	397
Total Inventory	31	27	142	57	15	3	-	275
SJA Inventory	105%		71%		29%			

OCTOBER 2020 HM MANNING SNAPSHOT

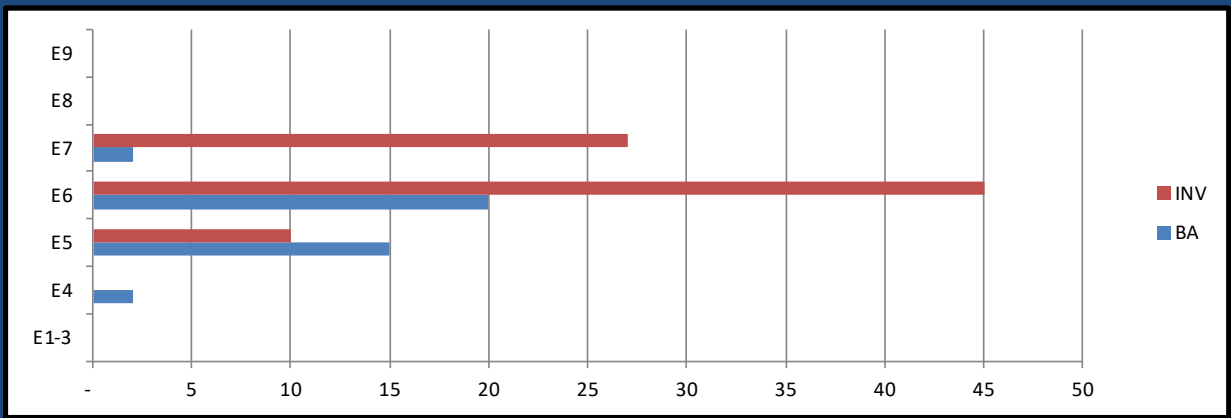
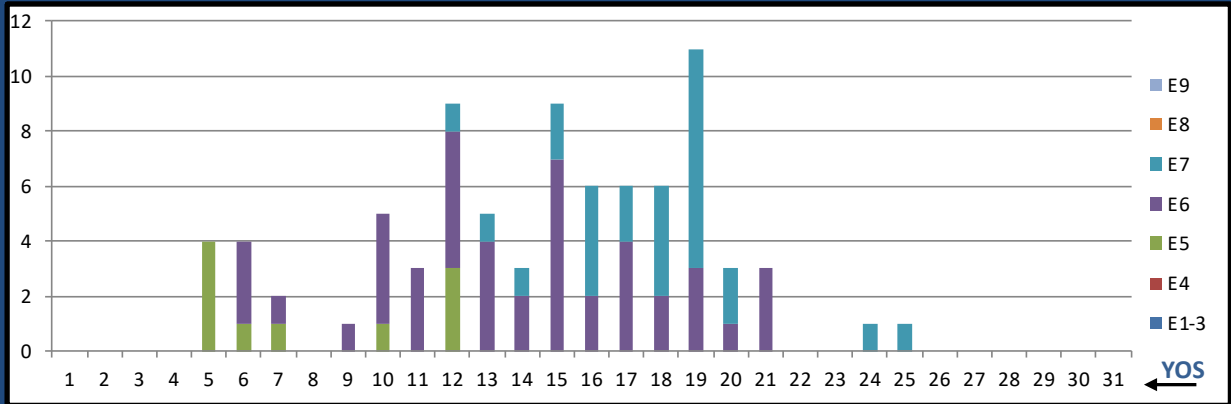
FTS L03A FLD MED TECH



	E1-3	E4	E5	E6	E7	E8	E9	Total
%INV to BA	0%	100%	133%	190%	86%	500%	0%	137%
BA	-	4	42	51	64	2	-	163
Total Inventory	-	4	56	97	55	10	1	223
SJA Inventory	100%		165%		100%			

OCTOBER 2020 HM MANNING SNAPSHOT

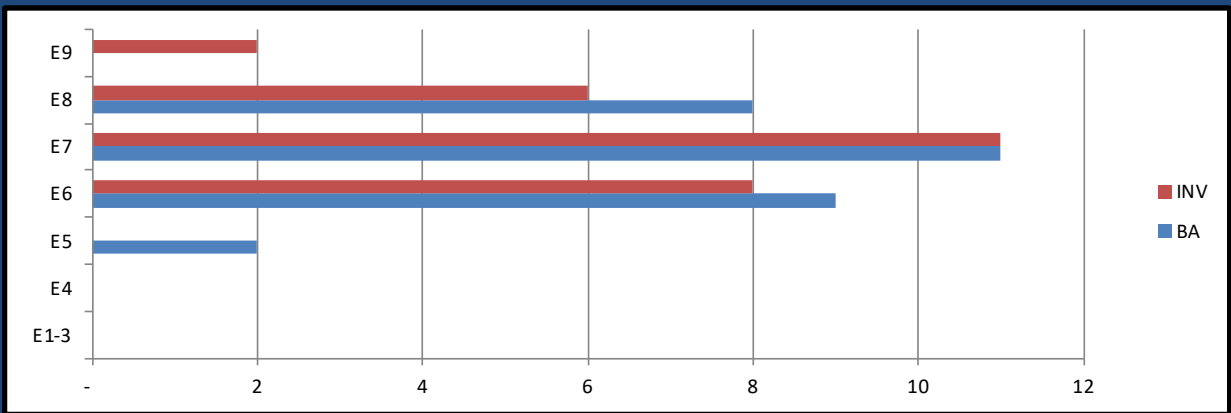
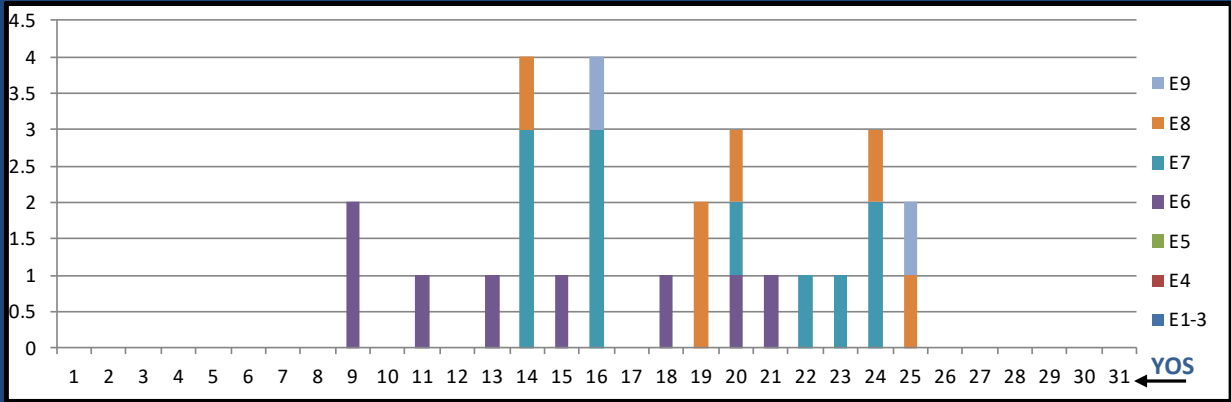
FTS L04A AERO MED TECH



	E1-3	E4	E5	E6	E7	E8	E9	Total
%INV to BA	0%	0%	67%	225%	1350%	0%	0%	210%
BA	-	2	15	20	2	-	-	39
Total Inventory	-	-	10	45	27	-	-	82
SJA Inventory	0%		157%		1350%			

OCTOBER 2020 HM MANNING SNAPSHOT

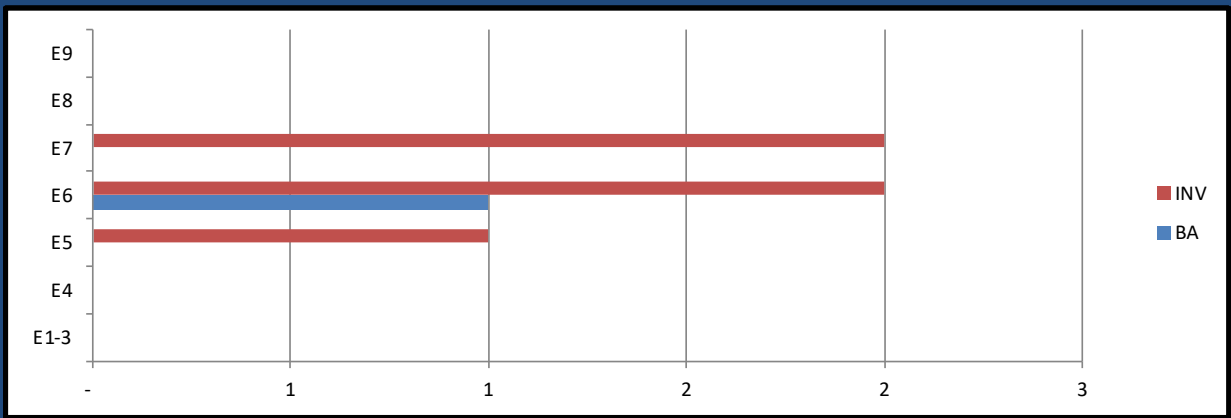
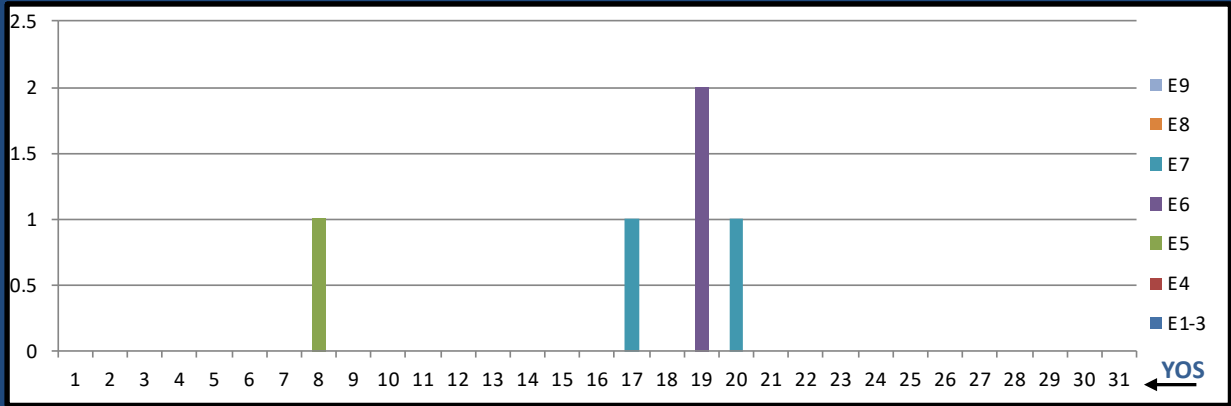
FTS L10A SURFACE FORCE IDC



	E1-3	E4	E5	E6	E7	E8	E9	Total
% INV to BA	0%	0%	0%	89%	100%	75%	0%	90%
BA	-	-	2	9	11	8	-	30
Total Inventory	-	-	-	8	11	6	2	27
SJA Inventory	#DIV/0!		73%		100%			

OCTOBER 2020 HM MANNING SNAPSHOT

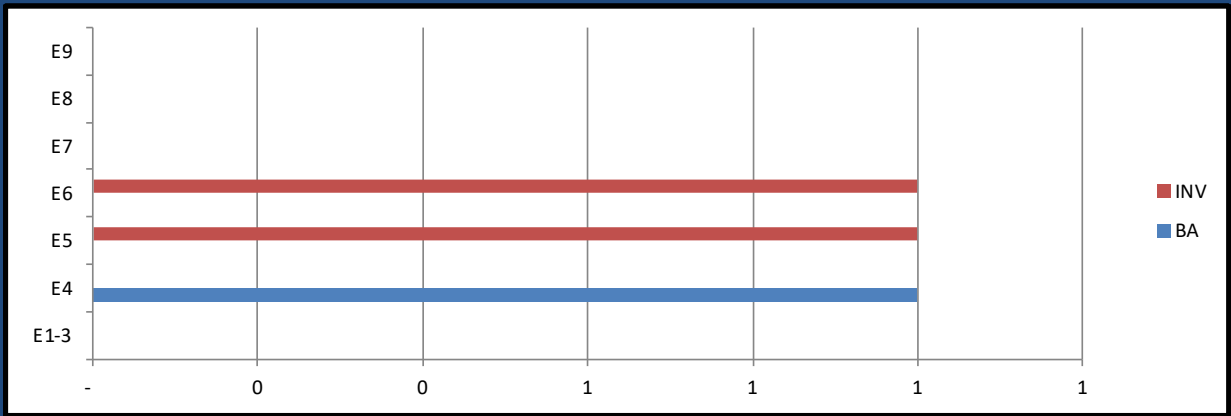
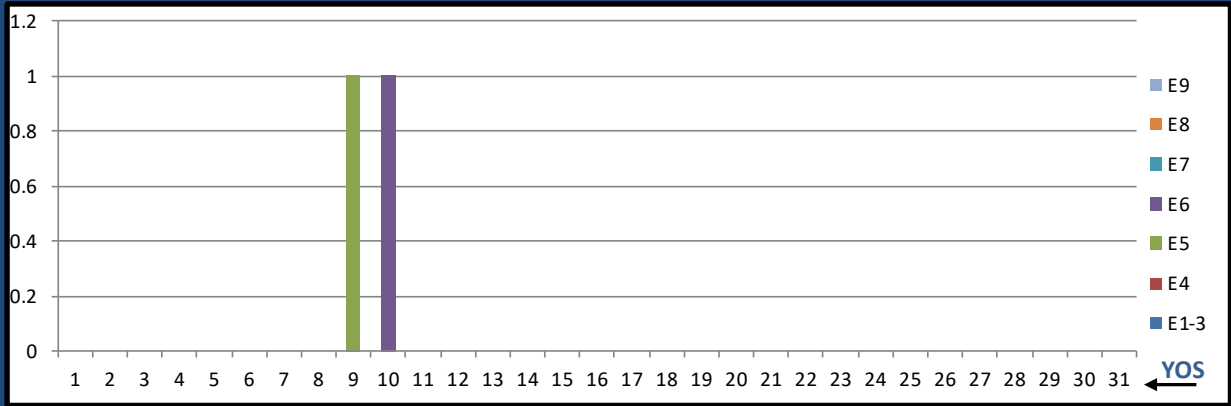
FTS L12A PREV MED TECH



	E1-3	E4	E5	E6	E7	E8	E9	Total
%INV to BA	0%	0%	0%	200%	0%	0%	0%	500%
BA	-	-	-	1	-	-	-	1
Total Inventory	-	-	1	2	2	-	-	5
SJA Inventory	#DIV/0!		300%		#DIV/0!			

OCTOBER 2020 HM MANNING SNAPSHOT

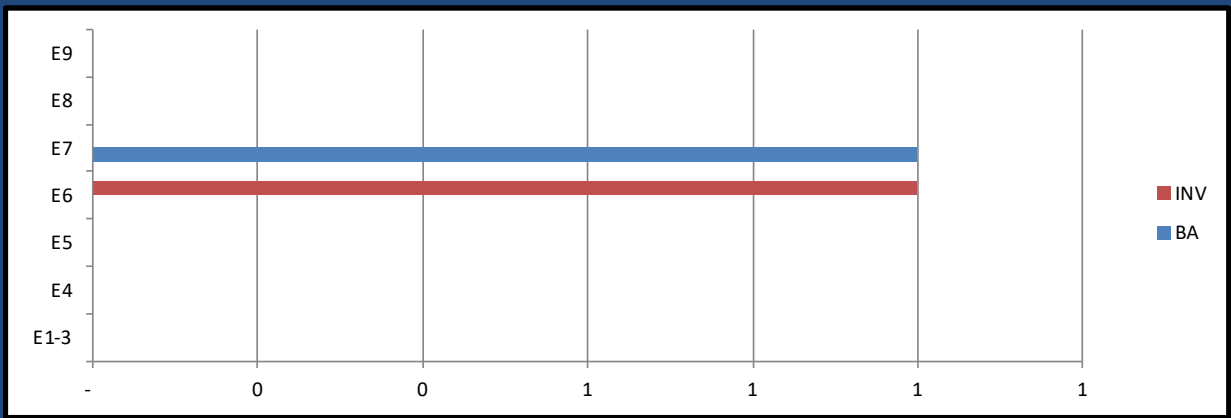
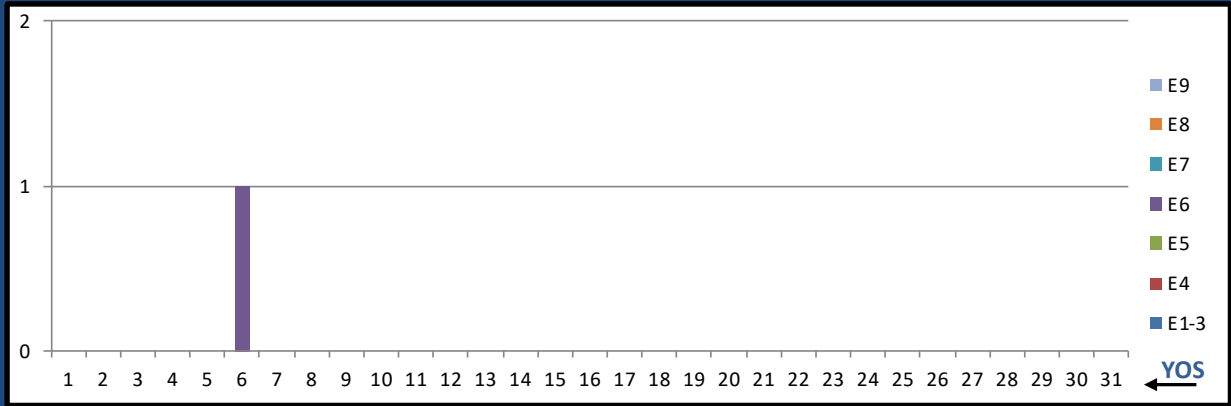
FTS L23A SURG TECH



	E1-3	E4	E5	E6	E7	E8	E9	Total
%INV to BA	0%	0%	0%	0%	0%	0%	0%	200%
BA	-	1	-	-	-	-	-	1
Total Inventory	-	-	1	1	-	-	-	2
SJA Inventory	0%	#DIV/0!		#DIV/0!				

OCTOBER 2020 HM MANNING SNAPSHOT

FTS L39A Navy Drug and Alcohol Counselor Intern



	E1-3	E4	E5	E6	E7	E8	E9	Total
%INV to BA	0%	0%	0%	0%	0%	0%	0%	100%
BA	-	-	-	-	1	-	-	1
Total Inventory	-	-	-	1	-	-	-	1
SJA Inventory	#DIV/0!	#DIV/0!	#DIV/0!	#DIV/0!	#DIV/0!	0%	#DIV/0!	#DIV/0!