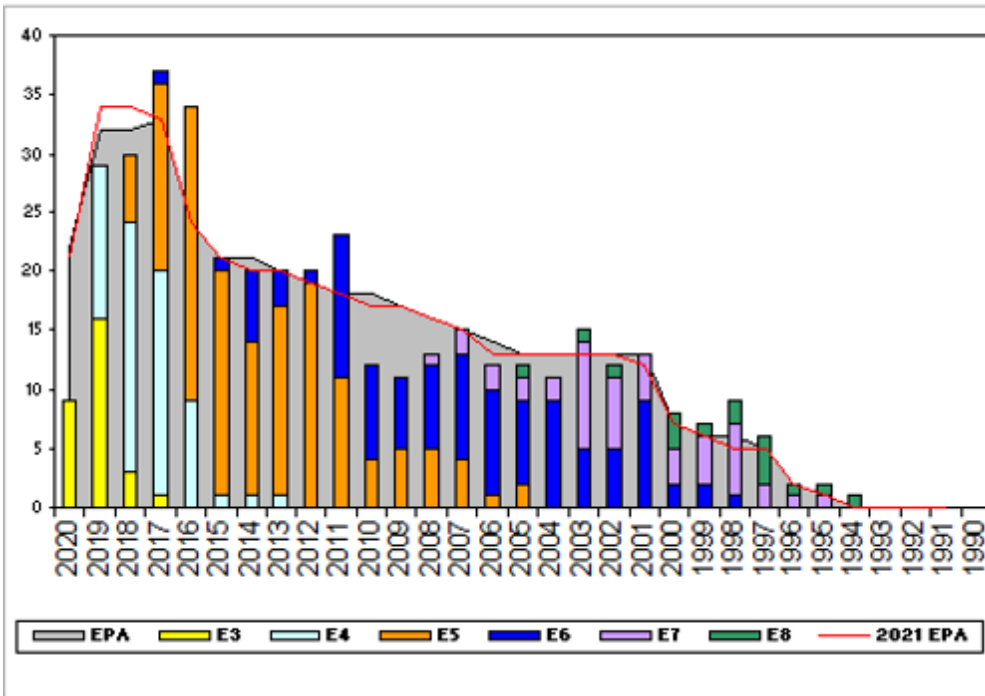
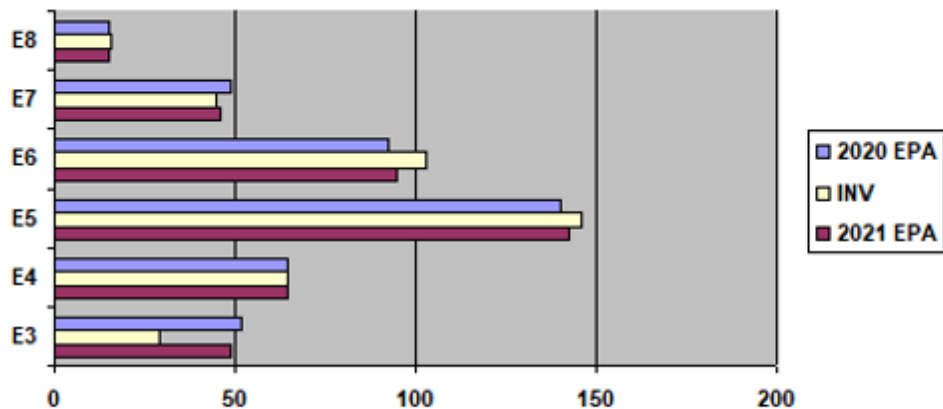


# Aviation Electronics Technician, FTS - J130



**EPA by Paygrade vs Inventory**



	E1-3	E4	E5	E6	E7	E8	E9	TOTAL
% INV to FY20 EPA	56%	100%	104%	111%	92%	107%	0%	98%
EPA (FY20)	52	65	140	93	49	15	0	414
INVENTORY	29	65	146	103	45	16	0	404
EPA (FY21)	49	65	142	95	46	15	0	412
% INV to FY21 EPA	59%	100%	103%	108%	98%	107%	0%	98%

TOUR	Sea Shore Rotation		MANNING			ADV OPP.	
	SEA	SHORE	PG	SEA	SHORE	ATFTS	All-Navy
E1-3	48	42	E1-3	50.00%	71.43%	TIR	TIR
E4	48	42	E4	128.57%	63.33%	9.00%	30.9%
E5	48	42	E5	87.10%	128.21%	5.00%	24.1%
E6	48	42	E6	114.29%	97.06%	5.00%	5.4%
E7	48	36	E7	105.56%	88.89%	21.90%	20.8%
E8	48	36	E8	88.89%	140.00%	12.90%	7.6%
E9	42	36	E9	0.00%	0.00%	0.00%	21.7%

### Zone Information

	ZONE A	ZONE B	ZONE C	ZONE D	ZONE E	ALL ZONES
FY20 Manning:	98%	106%	79%	94%	130%	98%
FYTD RE Rate:	64.71%	80.00%	75.00%	100.00%	23.08%	67.44%
FY21 Manning:	96%	108%	80%	96%	135%	98%

### NOTES

**CURRENT MANNING 98% TO FY21 EPA  
\*\*\*MANNED RATING\*\*\***

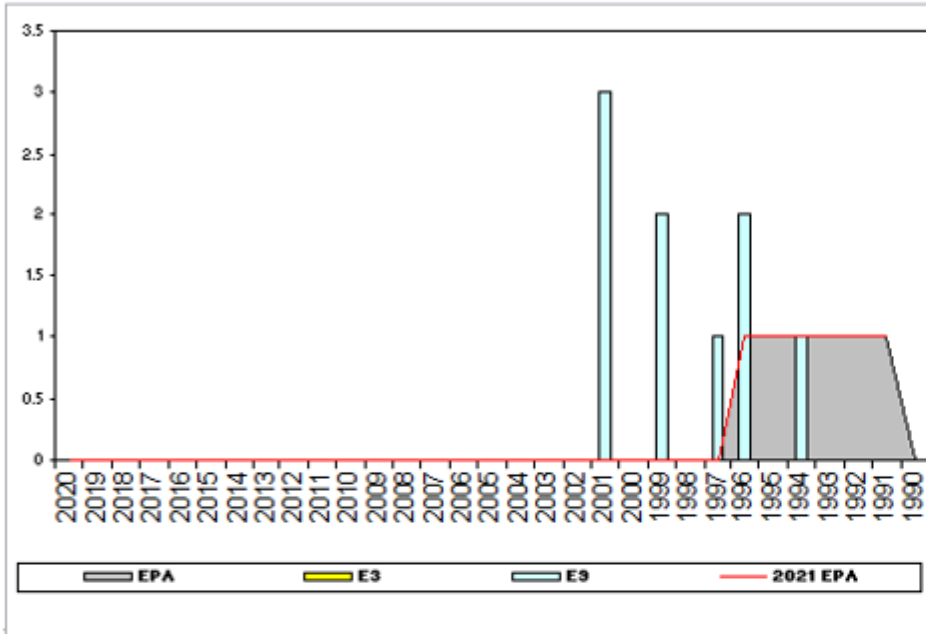
**-ASVAB requirements: AR+MK+EI+GS=222 OR  
VE+AR+MK+MC=222**

**\*\*Security clearance is required for this rating\*\***

**\*\*Interim clearance documentation must be provided to be considered\*\***

**For any questions regarding community health, Convert-In, or  
Convert-Out opportunities, please contact AFCM(AW) Bienemy at  
[TRAVIS.BIENEMY@NAVY.MIL](mailto:TRAVIS.BIENEMY@NAVY.MIL)**

## Aviation Avionics Technician, FTS - J140

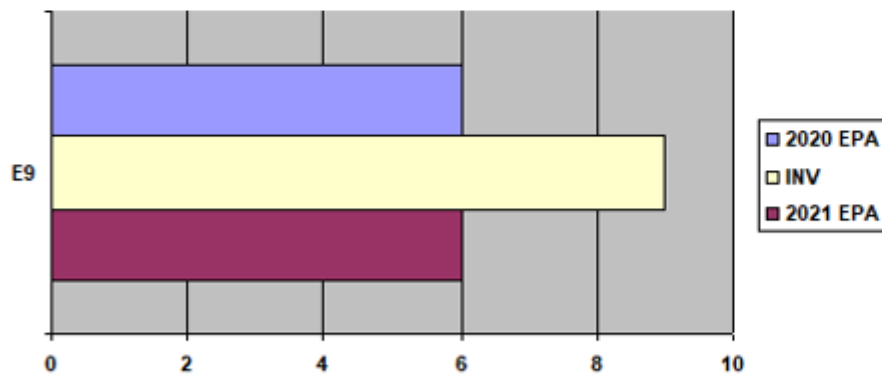


	Sea Shore Rotation			MANNING		ADV OPP.	
	TOUR	SEA	SHORE	PG	SEA	SHORE	AVFTS
E1-3	48	42	E1-3	0.00%	0.00%	TIR	TIR
E4	48	42	E4	0.00%	0.00%	0.00%	30.9%
E5	48	42	E5	0.00%	0.00%	0.00%	24.1%
E6	48	42	E6	0.00%	0.00%	0.00%	5.4%
E7	48	36	E7	0.00%	0.00%	0.00%	20.8%
E8	48	36	E8	0.00%	0.00%	0.00%	7.6%
E9	42	36	E9	200.00%	250.00%	40.00%	21.7%

### Zone Information

	ZONE A	ZONE B	ZONE C	ZONE D	ZONE E	ALL ZONES
<b>FY20 Manning:</b>	0%	0%	0%	0%	100%	150%
<b>FYTD RE Rate:</b>	0.00%	0.00%	0.00%	100.00%	33.33%	50.00%
<b>FY21 Manning:</b>	0%	0%	0%	0%	100%	150%

EPA by Paygrade vs Inventory



### NOTES

**CURRENT MANNING 150% TO FY21 EPA**  
**\*\*\*OVERMANNED RATING\*\*\***

**For any questions regarding community health, please contact AFCM(AW) Bienemy at TRAVIS.BIENEMY@NAVY.MIL**

	E1-3	E4	E5	E6	E7	E8	E9	TOTAL
<b>% INV to FY20 EPA</b>	0%	0%	0%	0%	0%	0%	150%	150%
<b>EPA (FY20)</b>	0	0	0	0	0	0	6	6
<b>INVENTORY</b>	0	0	0	0	0	0	9	9
<b>EPA (FY21)</b>	0	0	0	0	0	0	6	6
<b>% INV to FY21 EPA</b>	0%	0%	0%	0%	0%	0%	150%	150%

Data Source: NMPBS(Inv)/NRMS(RE Rate)/N12(EPA/SSF)/BUPERS3(Adv Op) **As of Date: 18-Sep-20**