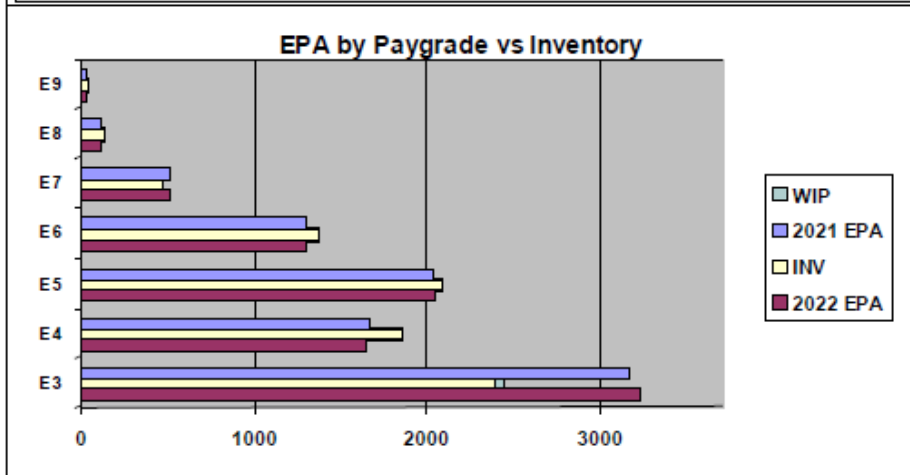
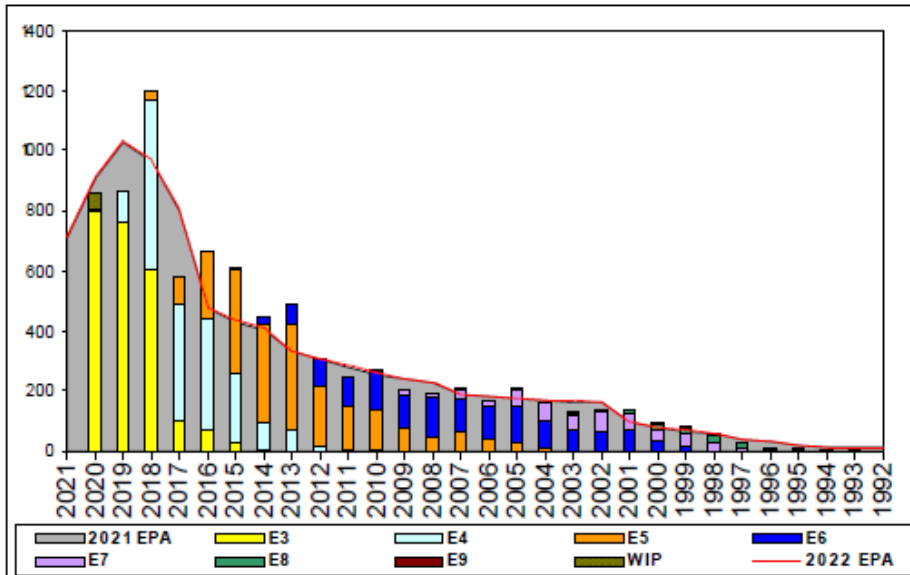


Aviation Ordnanceman - A420



	E1-3	E4	E5	E6	E7	E8	E9	TOTAL
% INV to FY21 EPA	75%	111%	102%	106%	91%	117%	117%	94%
EPA (FY21)	3168	1663	2039	1299	517	114	36	8836
INVENTORY	2389	1850	2088	1377	469	133	42	8348
EPA (FY22)	3229	1649	2057	1300	520	113	37	8905
% INV to FY22 EPA	74%	112%	102%	106%	90%	118%	114%	94%
INV +WIP / FY21 EPA	77%							95%
INVENTORY	2446	57	← E-3 and Below WIP					8405
INV +WIP / FY22 EPA	76%							94%

Sea Shore Flow		
TOUR	SEA	SHORE
1ST	55	36
2ND	60	36
3RD	48	36
4TH	48	36
5TH	36	36
6TH	36	36
7TH	36	36

FORCE STRUCTURE MANNING TO BA										
	PG	SEA	INV	BA	SHORE	INV	BA	SEA + SHORE	TOTAL INV	TOTAL BA
1ST	E1-3	71.6%	1834	2560	70.6%	125	177	71.6%	1959	2737
2ND	E4	110.0%	1355	1232	117.3%	379	323	111.5%	1734	1555
3RD	E5	83.2%	904	1086	120.7%	1043	864	99.8%	1947	1950
4TH	E6	94.0%	761	810	128.7%	543	422	105.8%	1304	1232
5TH	E7	82.4%	216	262	94.9%	224	236	88.4%	440	498
6TH	E8	107.8%	69	64	150.0%	60	40	124.0%	129	104
7TH	E9	113.6%	25	22	125.0%	15	12	117.6%	40	34
Total		85.6%	5164	6036	115.2%	2389	2074	93.1%	7553	8110

ADV OPP. (Cycles 242/244/245)							
All-Navy	E1-3	E4	E5	E6	E7	E8	E9
10yr Avg	TIR	34.9%	22.1%	13.9%	22.0%	11.6%	13.1%
All-Navy	TIR	28.3%	20.8%	8.1%	25.9%	13.6%	12.3%
AO	TIR	16.0%	12.0%	6.0%	21.4%	11.9%	20.0%

Zone Info	ZONE A	ZONE B	ZONE C	ZONE D	ZONE E	ALL ZONES
FY21 Manning:	96.0%	103.0%	88.0%	90.0%	72.0%	94.0%
FYTD RENL Rate:	59.6%	59.2%	87.1%	97.3%	20.6%	64.0%
FY22 Manning:	95.0%	102.0%	88.0%	89.0%	71.0%	93.7%

NOTES

- Manning currently at 94% for FY22 EPA**
*****UNDERMANNED RATING!*****
- Convert in for YG 2017 & 2019 E3 and below exist.
- *****Convert out opportunity does not exist!!!*****
- ASVAB requirements: VE+AR+MK+AS=185 OR MK+AS+AO=140
- Security clearance is required for this rating. Must be DONCAF Adjudicated.
- SRB: Refer to NPC website.