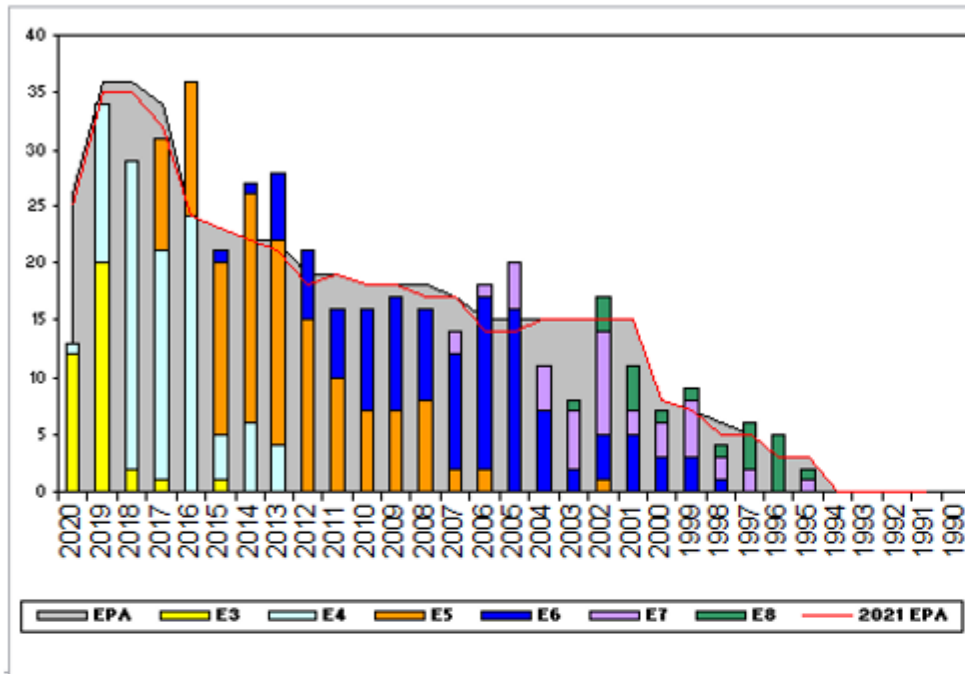


Aviation Machinist's Mate, FTS - J020

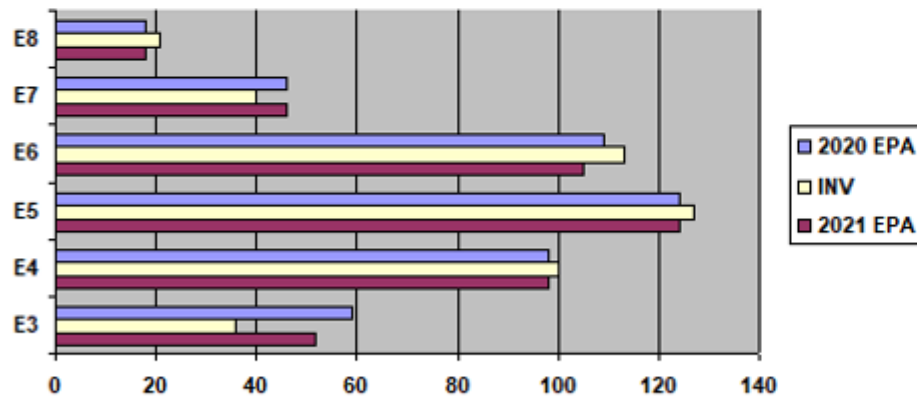


TOUR	Sea Shore Rotation		MANNING		ADV OPP.		
	SEA	SHORE	PG	SEA	SHORE	ADFTS	All-Navy
E1-3	48	42	E1-3	70.97%	57.14%	TIR	TIR
E4	48	42	E4	95.95%	100.00%	33.00%	30.9%
E5	48	42	E5	89.53%	111.11%	13.00%	24.1%
E6	48	42	E6	89.86%	180.00%	3.00%	5.4%
E7	48	36	E7	96.15%	64.71%	11.30%	20.8%
E8	48	36	E8	76.92%	220.00%	3.80%	7.6%
E9	42	36	E9	0.00%	0.00%	0.00%	21.7%

Zone Information

	ZONE A	ZONE B	ZONE C	ZONE D	ZONE E	ALL ZONES
FY20 Manning:	92%	112%	89%	99%	91%	96%
FYTD RE Rate:	76.92%	83.33%	83.33%	100.00%	33.33%	79.73%
FY21 Manning:	94%	115%	90%	101%	94%	99%

EPA by Paygrade vs Inventory



	E1-3	E4	E5	E6	E7	E8	E9	TOTAL
% INV to FY20 EPA	61%	102%	102%	104%	87%	117%	0%	96%
EPA (FY20)	59	98	124	109	46	18	0	454
INVENTORY	36	100	127	113	40	21	0	437
EPA (FY21)	52	98	124	105	46	18	0	443
% INV to FY21 EPA	69%	102%	102%	108%	87%	117%	0%	99%

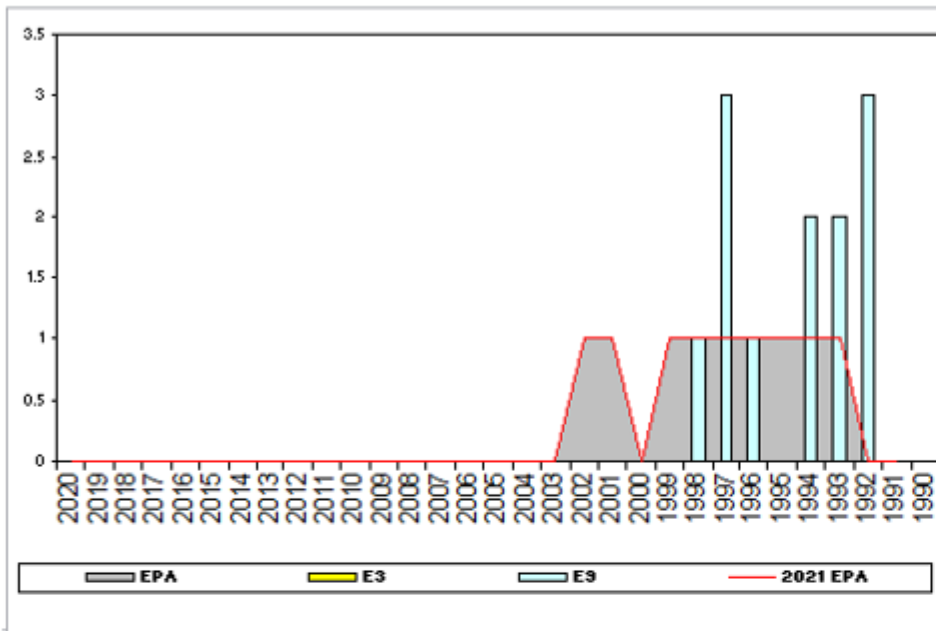
NOTES

CURRENT MANNING 99% TO FY21 EPA

*****MANNED RATING*****

For any questions regarding community health, Convert-In, or Convert-Out opportunities, please contact AFCM(AW) Bienemy at TRAVIS.BIENEMY@NAVY.MIL

Aviation Maintenance, FTS - J040

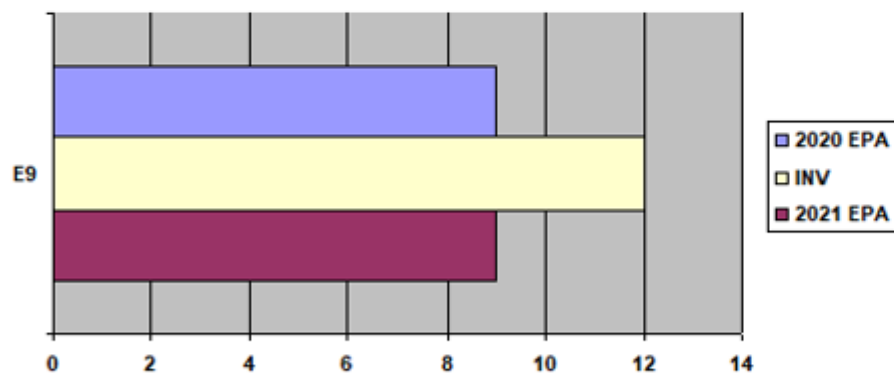


TOUR	Sea Shore Rotation		MANNING			ADV OPP.	
	SEA	SHORE	PG	SEA	SHORE	AFFTS	All-Navy
E1-3	48	42	E1-3	0.00%	0.00%	TIR	TIR
E4	48	42	E4	0.00%	0.00%	0.00%	30.9%
E5	48	42	E5	0.00%	0.00%	0.00%	24.1%
E6	48	42	E6	0.00%	0.00%	0.00%	5.4%
E7	48	36	E7	0.00%	0.00%	0.00%	20.8%
E8	48	36	E8	0.00%	0.00%	0.00%	7.6%
E9	42	36	E9	85.71%	200.00%	20.00%	21.7%

Zone Information

	ZONE A	ZONE B	ZONE C	ZONE D	ZONE E	ALL ZONES
FY20 Manning:	0%	0%	0%	0%	171%	133%
FYTD RE Rate:	0.00%	0.00%	0.00%	0.00%	50.00%	50.00%
FY21 Manning:	0%	0%	0%	0%	171%	133%

EPA by Paygrade vs Inventory



	E1-3	E4	E5	E6	E7	E8	E9	TOTAL
% INV to FY20 EPA	0%	0%	0%	0%	0%	0%	133%	133%
EPA (FY20)	0	0	0	0	0	0	9	9
INVENTORY	0	0	0	0	0	0	12	12
EPA (FY21)	0	0	0	0	0	0	9	9
% INV to FY21 EPA	0%	0%	0%	0%	0%	0%	133%	133%

NOTES

**CURRENT MANNING 133% TO FY21 EPA
OVERMANNED RATING**

**For any questions regarding community health, please contact
AFCM(AW) [Bienemy](mailto:TRAVIS.BIENEMY@NAVY.MIL) at TRAVIS.BIENEMY@NAVY.MIL**

Data Source: NMPBS(Inv)/NRMS(RE Rate)/N12(EPA/SSF)/BUPERS3(Adv Op) **As of Date:** 18-Sep-20