



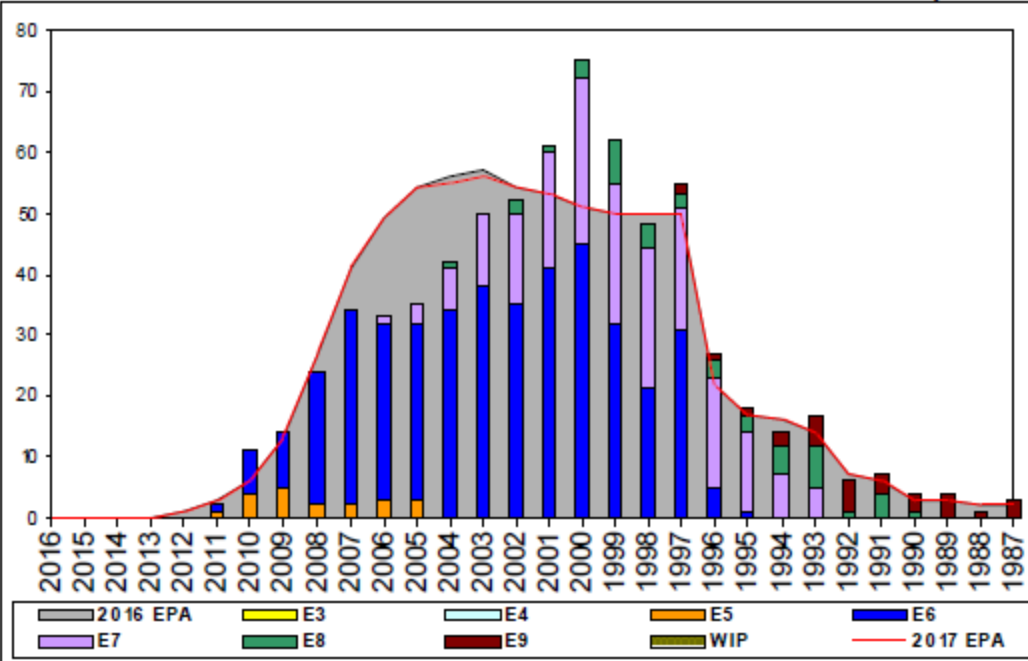
Community Health NC



BUPERS-32
15 Aug 16



Navy Counselor - B670



Sea Shore Flow

TOUR	SEA	SHORE
1ST		
2ND	48	42
3RD	36	42
4TH	36	42
5TH	36	36
6TH	36	36
7TH	36	36

FORCE STRUCTURE MANNING

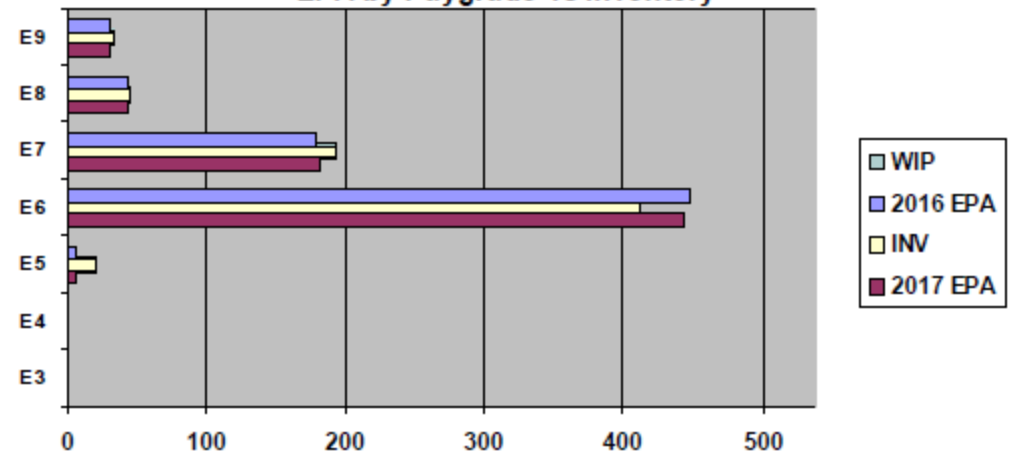
PG	SEA	INV	BA	SHORE	INV	BA	SI
E1-3	0.0%	0	0	0.0%	0	0	#
E4	0.0%	0	0	0.0%	0	0	#
E5	400.0%	8	2	166.7%	5	3	26
E6	80.8%	232	287	105.1%	164	156	8
E7	152.1%	73	48	91.3%	115	126	10
E8	127.3%	14	11	90.3%	28	31	10
E9	110.0%	11	10	110.5%	21	19	11
Total	94.4%	338	358	99.4%	333	335	9

ADV OPP.						
	E1-3	E4	E5	E6	E7	
All-Navy	TIR	29.0%	16.6%	11.6%	20.8%	1
NC	TIR	0.00%	0.00%	81.82%	20.11%	1

Zone Information

	ZONE A	ZONE B	ZONE C	ZONE D	ZONE E
FY16 Manning	75.0%	101.0%	74.0%	114.0%	108.0%
FYTD RE Rate:	100.00%	100.00%	88.89%	98.21%	37.50%
FY17 Manning	75.0%	101.0%	75.0%	114.0%	108.0%

EPA by Paygrade vs Inventory



	E1-3	E4	E5	E6	E7	E8	E9	TOTAL
% INV to FY16 EPA	0%	0%	286%	92%	108%	105%	110%	99%
EPA (FY16)	0	0	7	449	179	42	30	707
INVENTORY	0	0	20	412	193	44	33	702

NOTES

Area reserved for notes.

Consolidated Data FY 16

- Data report as of 03 August 2016
- 72 Total Active conversions
- 11 FTS conversions
- 32 Pending CWAY applications
 - Breakdown of conversions
- 11 CWAY conversions (Active and RC/AC)
- 61 Lateral conversions
 - Types of conversions
- 31 Direct conversions
- 21 NWAЕ conversions
- 20 Conversions via passing the CCC course

FY17 Way Ahead

- FY17 Forecasted losses are 57 (Hard losses)
- FY17 EPA 705 (As of August 1st 2016)
- Current Inventory 695
- Total forecast inventory 707, 100% (1 Oct 2016)
- Delta of +2
- Total conversion needed 67 (+12 allows for unknown convert out's =101% by the end of FY17)
- Total conversion per month FY17: 6
- Currently have 32 pending CWAY packages